

EDUCATIONAL PLANT SURVEY

FLORIDA STATE UNIVERSITY

Fiscal Year July 1, 2018 – June 30, 2023



Facilities Inventory Validation

September 26 – 28, 2017

Space Needs Assessment

October 24 – 26, 2017

*Prepared by
Florida State University
Facilities Planning and Space Management
Tallahassee, Florida*

Table of Contents

Table of Contents.....	2
List of Tables.....	3
Educational Plant Survey Team.....	4
I INTRODUCTION.....	5
Definitions and Requirements for Educational Plant Survey	
The Purpose of the Educational Plant Survey	
Types of Facilities Addressed in Survey	
II OVERVIEW OF THE SURVEY PROCESS.....	6
III THE FACILITIES INVENTORY VALIDATION.....	8
The Purpose of Validation	
Sampling Technique	
Functions of Survey Team during Validation	
IV THE SPACE NEEDS ASSESSMENT.....	11
Objective	
Types of Recommendations	
Space Needs Formula	
V OVERVIEW OF THE UNIVERSITY	12
Mission, Core Values, Vision and Strategic Goals	
Organization of the University	
University Sites	
VI ACADEMIC DEGREE PROGRAMS OF THE UNIVERSITY.....	17
VII ANALYSIS OF STUDENT ENROLLMENT.....	30
VIII INVENTORY OF EXISTING SITES AND BUILDINGS.....	35
IX QUANTITATIVE (FORMULA) SPACE NEEDS.....	44
X RECOMMENDATIONS OF SURVEY TEAM.....	47
XI FUNDING OF CAPITAL PROJECTS.....	53
Appendices.....	55
A. Board of Governors (BOG) Survey Procedures	
B. Explanation of Space Needs Generation Formula	
C. Building Assessment Form	
D. FSU Campus Master Plan Overview	
E. Florida State University's Strategic Plan	
Site Maps.....	56

List of Tables

Table 1	7
Educational Plant Survey Activities	
Table 2	9
Buildings Included in Inventory Validation	
Table 3	17
Academic Degree Programs	
Table 4	30
FTE Enrollment by Discipline and Level (Main Campus Fiscal Year 2015-2016)	
Table 5	34
Analysis of Planned Enrollment Change from 2015-2016 to 2022-2023	
Table 6	36
All Net Assignable Square Feet with EPS Categories by Site (Main Campus)	
Table 7	37
All Net Assignable Square Feet with EPS Categories by Building (Main Campus)	
Table 8	44
Space Standards Used in Fixed Capital Outlay Nine Space Category Needs Generation	
Table 9	45
Generated Net Assignable Square Feet by Space Category and Site	
Table 10	45
Comparison of Existing Satisfactory Space with Generated Square Footage Needs by Category	
Table 11	46
Analysis of Space Needs by Space Category	
Table 12	51
Analysis of Facilities Inventory Impact of Survey Recommended Projects	
Table 13	54
Fixed Capital Outlay Allocations of State Appropriations for Fiscal Years 2012-2013 To 2017-2018	

Educational Plant Survey Team

Survey team members participating in the Educational Plant Survey:

Ms. Robin Anderson - Team Leader

University of West Florida
Assistant Director, Facilities Planning and Construction

Ms. Ashley Grassano

University of Florida
BIM/CAD Coordinator, Space Management & Analysis
Planning, Design & Construction

Ms. Christy Collier

University of Central Florida
Assistant Director, Space Utility Analysis
Information Technologies and Resources

Mr. Kenneth Ogletree

Florida Board of Governors
Senior Project Architect
Finance & Facilities

Ms. Aileen Velasquez

Florida Board of Governors
Facilities Planner
Finance and Facilities

Mr. Dale Bradley

Florida Board of Governors
Associate Director, Budgets
Budget and Fiscal Policy

Ms. Peg Bonyata

Florida Board of Governors
Manager, Application Design & Support Process
Information Technology and Security

Other participants from the Florida Board of Governors' Information
Technology and Security department:

Gabriel Felcy, System Project Consultant

Ya Li, System Project Consultant

Elizabeth Adejokun-Ojo, Business Analyst

University Facilitator:

Ms. Lorilyne Pinkerton, Business Analysis
Facilities Planning and Space Management.

I Introduction

Definitions and Requirements for Educational Plant Survey

An Educational Plant Survey is defined in s. 1013.01(8), Florida Statutes, as a systematic study of present educational and ancillary plants and the determination of future needs to provide an appropriate educational program and services for each student based on projected capital outlay FTE's approved by Florida Board of Governors. The term "Educational plant" is defined in s. 1013.01(7), F. S., as those areas comprised of the educational facilities, site, and site improvements necessary to accommodate students, faculty, administrators, staff, and the activities of the educational program of each plant. The term "Ancillary plant" is defined in s. 1013.01(1), F. S., as an area comprised of the building, site, and site improvements necessary to provide such facilities as vehicle maintenance, warehouses, maintenance, or administrative buildings necessary to provide support services to an educational program.

A Survey is required at least every five years pursuant to s. 1013.31(1) F.S. In addition, s. 1013.64(4)(a), F.S., requires that each remodeling and renovation project included in the Board of Governors 3-year PECO Project Priority List be recommended in a Survey and, that the educational specifications for new construction be approved by the Board of Governors before appearing in the first year of this list. PECO (Public Education Capital Outlay) Funds are the primary source available to universities for academic and support facilities. By definition, as found in Section 1013.01(16), Florida Statutes, a PECO Funded Project is any "site acquisition, renovation, remodeling, construction project, or site improvement funded through this source of revenue and all buildings, equipment, other structures, and special educational use areas that are built, installed, or established to serve the primary educational instructional program of... [a] university board of trustees." (The procedures, as approved by the Board of Governors, can be found at the hyperlink noted in section A of Appendices).

The Purpose of Educational Plant Survey

The purpose of a Survey is to aid in the formulation of five-year plans to house the educational program and the student population, the faculty required to deliver and support the programs, and the staff and auxiliary and ancillary services needed for campus operations. Specific recommendations are provided to assist in the facilities planning process. The Survey should be considered as one element in the overall facilities planning process, which begins with the master planning process, and includes the Capital Improvement element of the Master Plan for the long-term physical development of the university, the shorter-term five-year Capital Improvement program, and the development of specific building programs before submitting a request for funding. An overview of the Florida State University's Master Plan can be found at the hyperlink noted section C of Appendices).

Surveys may be amended if conditions warrant a change in the construction program. Each revised Educational Plant Survey and each new Educational Plant Survey supersedes previous Surveys. This report may be amended, if conditions warrant, at the request of the board [of Trustees] (s. 1013.31(1) (a), F. S.). Recommendations contained in a Survey Report are null and void when a new Survey is completed.

Types of Facilities Addressed in Survey

Ten categories of space have been identified as those needed to meet educational program requirements. These categories are included within the nationally recognized space classification, as identified within the Postsecondary Educational Facilities Inventory and Classification Manual, dated November 2006. The need for merchandising facilities, residential facilities, and special-purpose non-credit facilities such as demonstration schools, continuing education centers, or dedicated intercollegiate athletic facilities are not addressed in this report. An evaluation of facilities needs associated with these activities would require a separate analysis of demand measures and program requirements.

II Overview of the Survey Process

The Survey process is comprised of two main components: the facilities Inventory Validation component and the Needs Assessment component. The fieldwork portion of the process is carried out by a Survey Team, which is directed by the Survey Leader from one of the university's sister institutions. Other Survey Team Members include staff from the Board of Governors Office of Finance and Facilities and staff from other universities who serve in the planning and space inventory areas of their institutions. A Survey Facilitator is assigned by the subject university to facilitate logistics, collection of data for Inventory Validation, development of the Survey Workbook used by the Survey Team, coordination of university activities, and final preparation and publication of this document. Significant preparation is necessary before each of the two Survey components are carried out. Table 1 identifies the main Survey Activities and lead responsibilities for each activity.

TABLE 1
Educational Plant Survey Activities

ACTIVITY	RESPONSIBILITY		
	UNIVERSITY	BOARD OF GOVERNORS	SURVEY TEAM
Establish Schedule	X	X	
Letter to President		X	
Dates, Procedures, Responsibilities, Designation of Univ. Rep., Determine Inventory Sample for Validation	X		
Identification of Existing/Proposed "Ineligible" Space	X	X	
Prepare Facilities Inventory Reports (Site/Building/Room Reports)	X		
Coordinate Logistics for Validation Field Work	X	X	
Perform Validation (on-site field work)	X	X	X
Update Inventory Based on Validation	X		
Provide Established Enrollment Projections		X	
Prepare Formula Space Needs Analysis	X		
Develop Proposed Projects & Justification	X		
Develop Survey Workbook (Schedule, mission statement, site data, Academic Programs, Enrollment, Space Needs, Inventory Data, Project Summaries & Justifications)	X		
Develop Comments regarding Degree Program Facility Needs		X	
Develop Comments regarding Proposed Projects (CIP & Master Plan)		X	
Coordinate Logistics for Needs Assessment Field Work	X	X	
Perform Needs Assessment (on-site field work) (Review proposed projects in relation to programs, space needs, data, current inventory, and any special justification)		X	X
Exit Meeting		X	X
Prepare Initial Summary of Survey Recommendations		X	X
Prepare Letter of Final of Survey Recommendations	X		
Prepare Written Report	X		
Approve Written Report		X	

III Facilities Inventory Validation

The Purpose of Validation

The main purpose of the validation component is to ensure that the facilities inventory data used in the subsequent space needs assessment component fairly represents the facilities available to support educational programs.

Sampling Technique

The validation component of the Survey is accomplished by a sampling technique. The sample of buildings and rooms is selected from the Physical Facilities Space Inventory file, an inventory system that contains data about sites, buildings, and rooms. Annually, changes in the File are reconciled to specific project activity. The buildings selected for validation include all buildings constructed since the last survey, all buildings affected by major renovation or remodeling, all buildings the University desires to change the designated condition to a satisfactory or unsatisfactory status, and additional buildings necessary to achieve a reasonable representation of all space categories. An analysis of past legislative appropriations is conducted to ensure that all the buildings affected by major renovation are included. Table 3 identifies the buildings included in the sample for validation. Facilities inventory reports with room detail schematic for plans were prepared to aid the Survey Team as they inspect rooms within the selected buildings.

Functions of Survey Team during the Validation

The main function of the Team is to compare existing conditions, identified by viewing the space, with the reported inventory data. Identification of condition changes, variance in room sizes, and proper room use or space category classifications are the objective of the Team. A list of variances is prepared and used to update facilities inventory. If significant classification errors are detected, a complete inventory validation is scheduled. There were no significant variances identified during this validation process.

TABLE 2
Buildings Included in Inventory Validation

New buildings constructed (expanded) or acquired since the 2013 Survey (2012 Validation):

Site 0001: Main Campus

Number	Name	GSF
0945	Stadium Place – Training Center	11,000
4016	President's Storage	1,159
4029	Honors, Scholars, and Fellows (Floors 2, 3, & 4) ¹	27,867
4240	Whitcomb Facility (Band)	1,347
4241	Campus Garden Shed	65
4242	Campus Garden Pavilion	551
4490	Labor & Construction Storage	676
4546	Tucker (Civic) Center (Conference Area) ¹	29,933

Site 0012: Belle Vue

Number	Name	GSF
4500	Carnaghi Arts Building	105,560
4551	Carnaghi Arts Building A	421
4552	Carnaghi Arts Building B	421
4553	Carnaghi Arts Building C	192

Site 0018: Innovation Park/Mag Lab

Number	Name	GSF
0069	Mag Lab – DC Building (Addition) ¹	1,980
0269	Mag Lab – NMR Building (Addition) ¹	3,047
0804	I.P. – Sliger Building ²	40,521
0855	I.P. – Shaw Building ²	42,111
0860	Technology Services Building	80,022

No samplings were required – combined space of buildings surveyed covered all 9 categories.

1 Only additional or eligible (E&G) space shown in GSF

2 Buildings transferred to FSU from Innovation Park Authority (Previously Leased)

TABLE 2
Buildings Included in Inventory Validation

Buildings in Site Visit for Recently Bonded Project

All Facilities are on Main Campus (Site 0001)

Number	Name	GSF
0100	Campbell Stadium – South End Zone Level 3 and 4 Addition	+/-70,000
0819	Basketball Practice Facility	55,739
4061	Deviney Hall	102,860
4062	Azalea Hall	130,733
4090	Dunlap Indoor Practice Facility (Football)	96,131

IV Space Needs Assessment

Objective

The objective of the Survey Team during space needs assessment component is to develop specific project recommendations consistent with approved programs in the Campus Master Plan. (See section C of Appendices). The space needs assessment activity includes an evaluation of the following elements:

- Projects proposed by the University
- The results of applying a quantitative space needs model
- Any special justification presented by the University.

University officials provide supporting information to the proposed projects, the results of the quantitative space need's model, and any special justifications to the Survey Team in the form of a Survey Workbook and presentations by university officials.

Types of Recommendations

Projects proposed by the University include site acquisition, site improvements, renovation, remodeling, and new construction. The projects are presented as part of an overall development plan that includes identification of proposed uses of space to be vacated because of occupying the new buildings and remodeling of existing buildings.

Space Needs Formula

The space needs model applied the State University System Space Needs Generation Formula (Formula). The Formula was designed to recognize space requirements for a site based on academic program offerings, student enrollment by level, and research programs. A more complete explanation of the Formula is provided in section C of the Appendices. The most important measure in the Formula is student full-time-equivalent enrollment. Other important measures include positions, research activity, and library materials. The following space categories are included in the Formula:

Instructional	Academic Support	Instructional Support
Classroom	Study	Office/Computer
Teaching Laboratories	Instructional Media	Campus Support Services
Research Laboratories	Auditorium/Exhibit	
	Teaching Gymnasium	

Application of the Formula results in unmet space needs that are then compared to the effect of proposed projects on the facilities inventory. In cases where the Formula does not support proposed projects, the justification provided by the University is considered. Such justification may include the unique space requirements associated with a particular program. In some cases, the proposed facilities meet program requirements that are not addressed in the Formula. An example of such a case is the laboratories for the magnets at the FSU High Energy Magnetic Laboratory Facility. These types of areas far exceed the space allowances provided in the Formula and are regarded as ineligible to meet the space needs generated by the Formula. Similar treatment is given to unique facilities within the existing facilities inventory, such as the Antarctic Core. This ensures that Formula space needs are compared to facilities designed to meet those needs. The results of applying the Formula for the Survey are identified with Section IX of this report.

V Overview of the University

Mission

Florida State University preserves, expands, and disseminates knowledge in the sciences, technology, arts, humanities, and professions, while embracing a philosophy of learning strongly rooted in the traditions of the liberal arts. The university is dedicated to excellence in teaching, research, creative endeavors, and service. The university strives to instill the strength, skill, and character essential for lifelong learning, personal responsibility, and sustained achievement within a community that fosters free inquiry and embraces diversity.

Core Values

Transformative Daring: We support thoughtful risk-taking that leads to successes that improve our world dramatically. And when we face challenges, we confront them with resilience, curiosity, and renewed desire to overcome hurdles to our goals.

Inspired Excellence: We achieve the highest levels of success by drawing strength and understanding from the talents of those around us and from our interactions with them.

Dynamic Inclusiveness: We believe the benefits of a richly varied community arise not only from the diversity of people it includes, but more importantly from intentional efforts to create a strong sense of belonging that encourages deep and high-quality connections.

Responsible Stewardship: We transform the resources we are given and the public's trust in us into powerful impact that better the lives of those around us, near and far.

Engaged Community: We uphold the traditions and history that create a small-college culture within a large university. This makes FSU a welcoming place where people discover others like themselves-while also connecting to and learning from classmates and colleagues of vastly different backgrounds and experiences.

Vision

Florida State University will be among the nation's most entrepreneurial and innovative universities, transforming the lives of our students and shaping the future of our state and society through exceptional teaching, research, creative activity, and service. We will amplify these efforts through our distinctive climate-one that places a premium on interdisciplinary inquiry and draws from the rich intellectual and personal diversity of our students, faculty, staff, and alumni. These three forces-entrepreneurship, interdisciplinary, and diversity-deepen FSU's impact and result in a powerful return to our students and the people of Florida for their continued support and trust.

Strategic Goals

We will achieve our vision by pursuing the following six focused and interlocking goals:

Deepening our Distinctive Commitment to Continuous Innovation

Amplifying Excellence Across Our Academic and Research Programs

Realizing the Full Potential of Diversity and Inclusion

Ensuring Student Success on Campus and Beyond

Preparing our Graduates for 21st.Century Careers

Investing Strategically in Our Institution and Reputation

For the complete Florida State University Strategic Plan for 2017-2022 see Appendix E.

Organization of the University

The Florida State University is governed by a Board of Trustees, and the Board of Trustees reports to the Florida Board of Governors.

The Board of Trustees consists of thirteen members: six citizen members appointed by the Governor; five citizen members appointed by the Board of Governors; the chair of the faculty senate; and the president of the student body.

The President reports directly to the Board of Trustees.

The Division of Academic Affairs, Division of Finance and Administration, Division of Research, Division of Student Affairs, Division of University Advancement, Division of University Relations, Office of Inspector General Services, Office of the General Counsel, and Intercollegiate Athletics report directly to the President. The organization chart for the Office of the President, each Division, and the entire University can be found at this website:

http://hr.fsu.edu/index.cfm?page=DepartReps_PositionManagement_ClassOrgCharts

Members of the University Board of Trustees*

Edward E. "Ed" Burr, Chair

Todd Adams, President of the Faculty Senate

Maximo Alvarez

Kathryn Ballard

William "Billy" Buzzett

Emily Fleming "June" Duda

Jim W. Henderson

Kyle Hill, President of Student Body

Mark Hillis

Craig Mateer

Bob Sasser

Brent W. Sembler

President of the University

John Thrasher

Cabinet

Sally McRorie, Provost & Executive Vice President for Academic Affairs

Browning Brooks, Assistant Vice President for University Communications

Kyle Clark, Vice President for Finance and Administration

David Coburn, Chief of Staff

Kathleen Daly, Associate Vice President of University Relations

Carolyn A. Egan, General Counsel

Amy Hecht, Vice President of Student Affairs

Elizabeth Hirst, Deputy Chief of Staff

Thomas W. Jennings, Vice President for University Advancement

Janet Kistner, Vice President for Faculty Development and Advancement

Kathy Mears, Chief Legislative Affairs Officer

Gary K. Ostrander, Vice President of Research

Stan Wilcox, Vice President/Director of Athletics

*** Members as December 21, 2017**

University Sites

Florida State University owns or leases a total of 21 sites, of which 3 sites are leased or used by other entities. The remaining 18 sites combined to produce 4 campuses: Main Campus, Panama City Campus, Ringling Cultural Center, and the College of Medicine's Immokalee Clinic.

Main Campus

Main Campus is composed of the following 15 Sites:

Site No. 0001: Main Campus

The Main Campus of Florida State University is the most intensely developed property currently assigned to the University. This parcel of land is located immediately west of downtown Tallahassee. One of the most significant modifications to the Main Campus is the acquisition of additional land in the adjacent proximity to campus.

Site No. 0002 – Ball Marine Lab

Since 1964, Florida State University has managed this parcel of land located along Highway 98 in Franklin County. This site, more commonly referred to as the Florida State University Marine Lab, is used primarily by the FSU Department of Biological Sciences for research and K-12 academic purposes. The site also contains a dock, fuel tanks, and seawater pumping system and other facilities relevant to oceanographic research. The property is split by Highway 98 and all of the facilities are located on the southern side, adjacent to the Gulf. The upland portion of the property, which contains the majority of the acreage, is currently undeveloped.

Site No. 0003: Cascade Lake

This parcel of land is located several miles west of the Main Campus in Tallahassee. The property consists primarily of lake and cypress wetlands and is part of a chain of lakes that lie northwest of the municipal airport. There are no educational activities at this Site.

Site No. 0004: Alligator Point

Acquired in 1949, the Alligator Point site contains is located on bay front property in Franklin County. One building, a residential facility in nature, remains here. There are no educational activities at this Site.

Site No. 0005: Mission Road Station

This property, located off Mission Road approximately one mile northwest of the Main Campus, is largely undeveloped land. The buildings at this site are utilized primarily by the University's Department of Biological Sciences.

Site No. 0006: Plant Street

This property located off Plant Street between Pensacola Street and Jackson Bluff approximately one mile west of the Main Campus, has no permanent structures and no educational activities.

Site No. 0007: FSU Reservation

This property is located approximately four miles southwest of the Main Campus along the banks of Lake Bradford. The facilities at this site are used primarily for student recreational purposes. There are no educational activities at this Site.

Site No. 0008: Southwest Campus

The Southwest Campus, or 'Farm' as it is still sometimes referred to (it was originally the site of FSCW's Dairy Farm), is located southwest of the Main Campus. This property is currently the University's largest single holding. The Seminole Golf Course, the Broadcast Center, Alumni Village, the FSU Nursery, and several warehouses/storage facilities are found within this site, as well as the new Intramural Field Complex, the Morcom Aquatics Center, and the Indoor Tennis Facility.

Site No. 0012: Belle Vue

This property belongs to the Leon County School Board and is currently leased to FSU. The facility on the 15.33-acre site was formerly an elementary school but FSU has transformed it to an Art facility which brought together 4 previously leased venues.

Site No. 0013: Ridgeway

This 2.83-acre site has 2 facilities which were the former Florida Highway Patrol training center. Due to contamination, the facilities are only used for storage.

Site No. 0018: Innovation Park

Although the majority of land at Innovation Parks belongs to the Leon County Park Authority, the sections of land on which the National High Magnetic Field Laboratory, the Research Foundation Building a & B, the Materials Research Building, the AME facility, the Technology Services Building, the future site IRCB and the NWRDC facility are owned by the University.

Site No. 0019: Gadsden County

Critchfield Hall Recording Studio is the only facility located at this site. The physical location of the property is in Midway, Florida, which is in Gadsden County on the northwest quadrant of the intersection of Interstate 10 and Highway 90.

Site No. 0027: National Forest

This property is not owned by The Florida State University but the footprint of the building and tower are leased from the US Department of Forestry. It is located in the middle of the Apalachicola National Forest and consists of one facility, a transmitter and storage building, and a tower. Both structures support the broadcast of WFSU-TV and are owned by FSU.

Site No. 0041: Northwest Campus

This property is located north/north west of town and contains 3 facilities. It is currently used only for research and has no educational activities.

Site No. 0042: North Campus

This property is located north of town and contains 1 facility. It is used primarily for research but there are some educational activities that take place here.

Panama City Campus

Site No. 0010: Panama City Campus

Florida State University's Panama City Campus is located in Bay County and is situated between the North Bay and Gulf Coast Community College. There are 9 buildings on this site. The 10th building is located off-campus and is a TV transmitter building which is located adjacent to the public broadcast station.

Ringling Cultural Center

Site No. 0009: Sarasota

On July 1, 2000, Florida State University took control of the Ringling Museum in Sarasota, Florida. The Museum was adjacent to the Center for the Performing Arts which the University took control of in the spring of 1992. There are a total of 17 structures here at this location. The Center for the Performing Arts houses the Florida State University Conservatory of Professional Actor Training, the Asolo Theatre, Inc., a direct support organization of the Conservatory, and the Sarasota Ballet, a non-profit organization which works with the University's School of Visual Arts and Dance. The Ringling Museum houses the Art Museum, the Ca'D' Zan, and the Circus Museum, as well as several support structures.

Immokalee Medical Campus

Site 0067 – Immokalee Health Education Site

This 9.4-acre site is the home of the Isabel Collier Reed Facility which is a training site for the FSU College of Medicine. While this property is owned by FSU, its space is not part of this survey because all Medical facilities are exempt.

Other Owned Sites

The following Sites are owned by Florida State University but are leased to other entities and/or the space inventory is not accounted for by the University:

Site 0017 – Engineering

The FAMU-FSU College of Engineering is located in the center of Site 0008 – Southwest Campus. While FSU Facilities provides all services for the buildings and grounds, the College is governed by a Joint Management Council and is considered independent of both FAMU and FSU.

Site No. 0020: Southwood

The Florida State University Developmental Research School is located adjacent to the Tallahassee development known as ‘Southwood’. This property was purchased by Florida State University to relocate the old Developmental Research School, which was demolished to make room for the FSU Medical School facilities. The school is considered a ‘Charter School’ and the facilities are no longer part of the university’s inventory.

Site No. 0023: Heritage Grove

This site is the location west of Main Campus and is leased to an educational housing consortium for the purpose of relocating all of the off-campus fraternity houses. The University has access to the parking and in exchange the FSU Police Department patrols the private grounds.

Sites have been added to the University’s inventory to denote non-contiguous parcels or parcels that have a separation of ownership or function. Site types are defined in the SUS Regulation BOG 8.009 which can be accessed at <http://www.flbog.edu/about/regulations/regulations.php> the BOG website.

VI Academic Degree Programs of the University

The academic degree programs the University and student enrollment within the programs generates the primary demand for facilities. The Florida Board of Governors, pursuant to s.1001.75 (2) (h) F.S., has responsibility for approval of all new programs and elimination of existing programs. The approved (and eliminated) programs for the University are identified within Table 3.

TABLE 3
Academic Degree Programs (as of August 2017)

COLLEGE/DEPARTMENT			Major	Degree Level Offered at FSU by Degree CIP					
BOG Approved Program	Degree	Name of Major	Code	BACH	MAST	ADVM	SPEC	DOCT	PROF
ARTS & SCIENCES									
Earth, Ocean & Atmospheric Science 069									
	Geology	Geology	116010	400601	400601	-	-	400601	-
	Oceanography	Oceanography	116020	-	400607	-	-	400607	-
		Biological Oceanography	116021	-	400607	-	-	400607	-
		Chemical Oceanography	116022	-	400607	-	-	400607	-
		Geological Oceanography	116023	-	400607	-	-	400607	-
		Physical Oceanography	116024	-	400607	-	-	400607	-
		Aquatic Environmental Sciences	116026	-	400607	-	-	-	-
	Environmental Science	PSM in Aquatic Environmental Science	116027	-	400607	-	-	-	-
		Environmental Science and Policy	116030	030104	-	-	-	-	-
		Environmental Science	116031	030104	-	-	-	-	-
		Environmental Science/FSU-Teach	116032	030104	-	-	-	-	-
	Meteorology	Meteorology	116040	400401	400401	-	-	400401	-
		Applied Geosciences/FSU-Teach	116050	400401	-	-	-	-	-
Anthropology 072									
Anthropology	Anthropology	110510	450201	450201	-	-	450201	-	
Biological Science 074									
Biological Sciences	Biological Science	111110	260101	260101	-	-	260101	-	
	Biology/FSU-Teach	111111	260101	-	-	-	-	-	
Computational Biology	Computational Biology - Biological Science	111112	261104	-	-	-	-	-	
	Neuroscience	Neuroscience - Biology	111150	-	-	-	-	261501	-
Neuroscience		115501	-	-	-	-	261501	-	
Neuroscience - Psychology		118440	-	-	-	-	261501	-	
Chemistry and Biochemistry 075									
Chemistry	Chemistry	111610	400501	400501	-	-	400501	-	
	Analytical Chemistry	111611	-	400501	-	-	400501	-	
	Biochemistry	111612	-	400501	-	-	400501	-	
	Inorganic Chemistry	111613	-	400501	-	-	400501	-	
	Nuclear Chemistry	111614	-	400501	-	-	400501	-	
	Organic Chemistry	111615	-	400501	-	-	400501	-	
	Physical Chemistry	111616	-	400501	-	-	400501	-	
	Environmental Chemistry	111617	400501	-	-	-	-	-	
Chemical Physics	Materials Chemistry	111618	-	-	-	-	400501	-	
	Chemical Physics	117810	-	400508	-	-	400508	-	

	Chemical Science	Chemical Science	111620	400599	-	-	-	-	-
		Chemical Sciences/FSU-Teach	111621	400599	-	-	-	-	-
	Biochemistry	Biochemistry	111612	260202	-	-	-	-	-
Classics 076									
	Classics	Classics	111910	-	-	-	-	161200	-
		Classical Civilizations	111911	161200	161200	-	-	-	-
		Classics & Religion	111912	161200	-	-	-	-	-
		Classical Archaeology	111913	161200	161200	-	-	-	-
		Greek & Latin	111915	161200	161200	-	-	-	-
		Ancient History	111919	-	161200	-	-	-	-
	Greek	Greek	111920	161202	161202	-	-	-	-
	Latin	Latin	111930	161203	161203	-	-	-	-
English 077									
	English	English	114210	230101	230101	-	-	230101	-
		Literature	114212	230101	230101	-	-	230101	-
		Creative Writing	114215	230101	-	-	-	230101	-
		English / Business	114217	230101	-	-	-	-	-
		Creative Writing with an Emphasis in Business	114218	230101	-	-	-	-	-
		Editing, Writing, and Media	114219	230101	-	-	-	-	-
	Creative Writing	Creative Writing (MFA)	114216	-	231302	-	-	-	-
History 079									
	History	History	115210	540101	540101	-	-	540101	-
		Public History	115211	-	540101	-	-	-	-
		Middle Eastern Studies	115220	-	050108	-	-	-	-
Computer Science 080									
	Computer Science	Computer Science**	116610	110101	110101	-	-	110101	-
		Computer Science BA**	116611	110101	-	-	-	-	-
		Computer Programming and Applications**	116612	110101	-	-	-	-	-
		Computer & Network Systems Administration	116620	-	110101	-	-	-	-
		Software Engineering**	116630	110101	110101	-	-	-	-
		Information Security	116640	-	110101	-	-	-	-
		Cyber Security	116645	-	110101	-	-	-	-
		Computational Biology -							
	Computational Biology	Computer Science	116650	261104	-	-	-	-	-
	Computational Criminology	Computer Criminology -							
		Computer Science	116660	430116	430116	-	-	-	-
Mathematics 081									
	Mathematics	Mathematics	116810	270101	270101	-	-	270101	-
		Applied & Computational Mathematics	116811	270101	270101	-	-	270101	-
		Financial Mathematics	116813	-	270101	-	-	270101	-
		Biomathematics	116815	270101	270101	-	-	270101	-
		Mathematics/FSU-Teach	116816	270101	-	-	-	-	-
	Actuarial Science	Actuarial Science	116820	521304	-	-	-	-	-
Modern Languages 082									
	Russian	Russian	117130	160402	-	-	-	-	-
		Russian/Business	117131	160402	-	-	-	-	-
		Russian and Spanish	117132	160402	-	-	-	-	-
	Slavic	Slavic	117150	-	160400	-	-	-	-
	German	German	117120	160501	160501	-	-	-	-
		German/Business	117121	160501	-	-	-	-	-
		German and Russian	117122	160501	-	-	-	-	-
		German and Spanish	117123	160501	-	-	-	-	-
		German and Italian	117124	160501	-	-	-	-	-
		German Studies	117125	-	160501	-	-	-	-
	French	French	117110	160901	160901	-	-	160901	-
		French/Business	117111	160901	-	-	-	-	-
		French and Russian	117112	160901	-	-	-	-	-

		French and Spanish	117113	160901	-	-	-	-	-
		French and German	117114	160901	-	-	-	-	-
		French and Italian	117115	160901	-	-	-	-	-
	French and Francophone Studies	French and Francophone Studies	117116	050124	-	-	-	-	-
	Italian	Italian	117160	160902	-	-	-	-	-
		Italian/Business	117161	160902	-	-	-	-	-
		Italian and Russian	117162	160902	-	-	-	-	-
		Italian and Spanish	117163	160902	-	-	-	-	-
	Italian Studies	Italian Studies	117164	-	050126	-	-	-	-
	Spanish	Spanish	117140	160905	160905	-	-	160905	-
		Spanish/Business	117141	160905	-	-	-	-	-
	East Asian Languages & Cultures	Chinese Language and Culture	117170	160399	-	-	-	-	-
		Japanese Language and Culture	117171	160399	-	-	-	-	-
		Chinese and Japanese	117172	160399	-	-	-	-	-
		Chinese/Business	117173	160399	-	-	-	-	-
		Japanese/Business	117174	160399	-	-	-	-	-
	Middle Eastern Studies	Middle Eastern Studies	117180	050108	-	-	-	-	-
Philosophy 083									
	Philosophy	Philosophy	117610	380101	380101	-	-	380101	-
Physics 084									
	Physics	Physics	118110	400801	400801	-	-	400801	-
		Physics and Astrophysics	118111	400801	-	-	-	-	-
	Physical Science	Physical Science	118140	400899	-	-	-	-	-
		Physical Science/FSU Teach	118151	400899	-	-	-	-	-
Psychology 089									
	Psychology	Psychology **	118410	420101	420101	-	-	420101	-
		Psychobiology	118409	-	420101	-	-	-	-
		Clinical Psychology	118412	-	420101	-	-	420101	-
		Cognitive Psychology	118414	-	420101	-	-	420101	-
		Developmental Psychology	118415	-	420101	-	-	420101	-
		Social Psychology	118416	-	420101	-	-	420101	-
		Applied Behavior Analysis	118417	-	420101	-	-	-	-
		Neuroscience Psychology							
		(duplicate listing/Biological Sci.)							
	Neuroscience	Sci.	118440	-	-	-	-	261501	-
Religion 092									
	Religion	Religion	118610	380201	380201	-	-	380201	-
		Religion & Classics	118611	380201	-	-	-	-	-
Statistics 088									
	Statistics	Statistics	119310	270501	270501	-	-	270501	-
		Statistical Data Science	119312	-	270501	-	-	-	-
	Biostatistics	Biostatistics	119311	-	261102	-	-	261102	-
GFDI 071									
	Geophysical Dynamics	Fluid Geophysical Fluid Dynamics	117510	-	-	-	-	409999	-
Molecular Biophysics 073									
	Molecular Biophysics	Molecular Biophysics	117710	-	-	-	-	260206	-
		Biochemistry, Molecular & Cell Biology	117711	-	-	-	-	260206	-
		Computational Structural Biology	117712	-	-	-	-	260206	-
Computational Science 137									
	Computational Science	Computational Science	114010	303001	303001	-	-	303001	-
		PSM in Computational Science	114011	-	303001	-	-	-	-
		PSM in Comp. Sci. (Comp. Molecular Biology/Bioinform.)	114012	-	303001	-	-	-	-
		Computational Science (Atmospheric Science)	114020	-	-	-	-	303001	-
		Computational Science (Biochemistry)	114021	-	-	-	-	303001	-
		Computational Science (Biological Science)	114022	-	-	-	-	303001	-
		Computational Science (Geological Sciences)	114023	-	-	-	-	303001	-
		Computational Science	114024	-	-	-	-	303001	-

Arts & Sciences - Other Departmental Units		(Material Science)							
		Computational Science (Physics)	114025	-	-	-	-	303001	-
	Secondary Science and/or Math Teaching	Secondary Science and/or Math Teaching	112210	131205	-	-	-	-	-
		Science Teaching	112211	-	131205	-	-	-	-
		Community College Science Teaching	112212	-	131205	-	-	-	-
	History and Philosophy of Science	History and Philosophy of Science	115310	-	540104	-	-	-	-
	Humanities	Humanities	115910	240103	240103	-	-	240103	-
		Women's Studies	115912	240103	-	-	-	-	-
		Digital Humanities (effective Fall 2016)	115914	-	240103	-	-	-	-
	American and Florida Studies	American Studies	115915	050102	050102	-	-	-	-
THE GRADUATE SCHOOL 113									
Materials Science									
	Materials Science	Materials Science	680001	-	401001	-	-	-	-
		Materials Science/Chemical & Biomedical Engineering	680010	-	401001	-	-	-	-
		Materials Science/Civil & Environmental Engineering	680011	-	401001	-	-	-	-
		Materials Science/Electrical & Computer Engineering	680012	-	401001	-	-	-	-
		Materials Science/Industrial & Manufacturing Engineering	680013	-	401001	-	-	-	-
		Materials Science and Engineering	680014	-	401001	-	-	401001	-
		Materials Science/Mechanical Engineering	680015	-	401001	-	-	-	-
		Materials Science/Chemistry & Biochemistry	680030	-	401001	-	-	-	-
		Materials Science/Physics	680031	-	401001	-	-	-	-
		Materials Science/Scientific Computing	680032	-	401001	-	-	-	-
DEDMAN SCHOOL OF HOSPITALITY									
Hospitality Administration 115									
	Hospitality Management	Hospitality Management and Tourism**	205710	520901	-	-	-	-	-
		Global Club Management and Leadership**	205712	520901	-	-	-	-	-
BUSINESS									
Hospitality Administration 115									
	Hospitality Management	Hospitality Management**	215710	520901	-	-	-	-	-
		Professional Golf Management**	215711	520901	-	-	-	-	-
		Global Golf Management	215712	520901	-	-	-	-	-
		Hospitality & Tourism Management	211317	-	520101	-	-	-	-
Accounting 117									
	Accounting	Accounting**	210110	520301	-	-	-	-	-
		Assurance Services	210111	-	520301	-	-	-	-
		Accounting - Information Systems	210112	-	520301	-	-	-	-
		Taxation	210113	-	520301	-	-	-	-
		Corporate/Accounting	210114	-	520301	-	-	-	-
		Assurance & Advisory Services	210115	-	520301	-	-	-	-
		Accounting - Generalist	210116	-	520301	-	-	-	-
	Business Administration	Accounting	211311	-	-	-	-	520101	-
Risk Management/Insurance, Real Estate and Legal Studies 118									
	Risk Management - Insurance	Risk Management-Insurance**	216210	521701	-	-	-	-	-
	Risk Management	Risk Management	216215	-	521701	-	-	-	-
	Real Estate	Real Estate**	216220	521501	-	-	-	-	-
	Business Administration	Risk Management & Insurance	211316	-	-	-	-	520101	-
Management 119									

Management	Management**	216610	520201	520201	-	-	-	-
	Hospitality and Tourism	216611	-	520201				
	Human Resource Management**	216612	520201	-	-	-	-	-
	Risk Management/Insurance	216615	-	520201	-	-	-	-
Business Administration	Management	211344	-	-	-	-	520101	-
	Organizational Behavior & Human Resources	211322	-	-	-	-	520101	-
	Strategy	211324	-	-	-	-	520101	-
Marketing 120								
Marketing	Marketing**	216710	521401	521401	-	-	-	-
	Professional Sales**	216711	521401	-	-	-	-	-
	Retail Management	216712	521401	-	-	-	-	-
Business Administration	Marketing	211315	-	-	-	-	520101	-
Finance 121								
Finance	Finance**	214310	520801	520801	-	-	-	-
Business Administration	Finance	211312	-	-	-	-	520101	-
Business Analytics, Information Systems and Supply Chain 116								
Management Information Systems	Management Information Systems	217010	-	-	-	-	520101	-
	Management Information Systems**	217012	521201	521201	-	-	-	-
Business Interdepartmental								
Business Administration	Business Administration** (Panama City Campus)	211310	520101	-	-	-	-	-
	Business Administration**	211310		520101	-	-	520101	-
	Management Information Systems	211313	-	-	-	-	520101	-
	Entrepreneurship**	211321	520101	-	-	-	-	-
	Strategic Management	211323	-	-	-	-	520101	-
	On Campus MBA	211390	-	520101	-	-	-	-
Management Information Systems	Management Information Systems**	216840	521201	521201	-	-	-	-
Entrepreneurship	Entrepreneurship**	216820	520101	-	-	-	-	-
<Note: Joint degree>	Business Administration and Social Work	217774	-	520101	-	-	-	-

JIM MORAN SCHOOL OF ENTREPRENEURSHIP

Jim Moran School of Entrepreneurship 625

Entrepreneurship	Commercial Entrepreneurship	640110	520701	-	-	-	-	-
	Social Entrepreneurship	640120	520701	-	-	-	-	-

EDUCATION

School of Teacher Education 130

English Education	English Education	220903	131305	131305	-	131305	131305	-
	English Teaching	220930	-	131305	-	-	-	-
Mathematics Education	Mathematics Education	220904	131311	131311	-	131311	131311	-
	{Mathematics Education Mapping}	220964	131311	-	-	-	-	-
	Secondary Mathematics Education	220905	131311	-	-	-	-	-
	{Secondary Mathematics Education Mapping}	220965	131311	-	-	-	-	-
	Middle Grade Mathematics Education	220906	131311	-	-	-	-	-
	{Middle Grade Mathematics Education Mapping}	220966	131311	-	-	-	-	-
	Mathematics Teaching	220950	-	131311	-	-	-	-
Multilingual/Multicultural Education	Multilingual/Multicultural Education	220907	131306	131306	-	131306	131306	-
	Foreign and Second Language Teaching	220923	-	131306	-	-	-	-
	{Multilingual/Multicultural Education Mapping}	220967	131306	-	-	-	-	-
Science Education	Science Education	220908	131316	131316	-	131316	131316	-
	{Science Education Mapping}	220968	131316	-	-	-	-	-
Social Science Education	Social Science Education	220909	131317	131317	-	131317	131317	-
	Social Science Teaching	220931	-	131317	-	-	-	-
Special Education	Special Education	220911	-	131001	-	131001	131001	-
	Special Education Studies	220921	-	131001	-	-	-	-

Visual Disabilities	Exceptional Education	Student	220922	131001	131001	-	-	-	-
	Visual Disabilities**		220913	131009	131009	-	131009	-	-
Early Childhood Education	Visual Disabilities Studies**		220914	131009	-	-	-	-	-
	Visual Disabilities Education**		220915	131009	-	-	-	-	-
Elementary Education	Early Childhood Education**		220918	131210	131210	-	131210	131210	-
Reading Education	Elementary Education**		220919	131202	131202	-	131202	131202	-
	Reading Education/Language Arts		220920	-	131315	-	131315	131315	-
Secondary Science and/or Math Teaching Curriculum and Instruction	Science or Mathematics Teaching/FSU Teach		220940	131205	-	-	-	-	-
	Special Education		220980	-	130301	-	130301	130301	-
	Special Education Studies		220981	-	130301	-	-	-	-
	Exceptional Education	Student	220982	-	130301	-	-	-	-
	Visual Disabilities		220983	-	130301	-	130301	-	-
	Elementary Education		220984	-	130301	-	130301	130301	-
	Early Childhood Education		220985	-	130301	-	130301	130301	-
	English Education		220986	-	130301	-	130301	130301	-
	English Teaching		220987	-	130301	-	-	-	-
	Foreign and Second Language Teaching		220988	-	130301	-	-	-	-
	Foreign and Second Language Education		220989	-	130301	-	130301	130301	-
	Mathematics Education		220990	-	130301	-	130301	130301	-
	Mathematics Teaching		220991	-	130301	-	-	-	-
	Reading Education and Language Arts		220992	-	130301	-	130301	130301	-
	Science Education		220993	-	130301	-	130301	130301	-
	Social Science Education		220994	-	130301	-	130301	130301	-
	Social Science Teaching		220995	-	130301	-	-	-	-
Educational Psychology & Learning Systems 126									
Educational Psychology	Learning & Cognition		220306	-	422806	-	422806	422806	-
	Sports Psychology		220312	-	422806	-	-	422806	-
Instructional Systems	Instructional Systems		220307	-	130501	-	130501	130501	-
	Instructional Systems and Learning Technologies		220311	-	130501	-	130501	130501	-
	Open and Distance Learning		220313	-	130501	-	-	-	-
	Performance Improvement and Human Resource Development		220317	-	130501	-	-	-	-
Measurement & Statistics Counseling Psychology & Human Systems	Measurement & Statistics		220301	-	130603	-	130603	130603	-
	Career Counseling		220314	-	131101	-	131101	-	-
	Mental Health Counseling		220315	-	131101	-	131101	-	-
	School Counseling		220316	-	131101	-	131101	-	-
	School Psychology		220305	-	131101	-	131101	-	-
	Combine Program - Counseling Psychology & School Psychology		220309	-	-	-	-	131101	-
Rehabilitation Counseling	Rehabilitation Counseling		220326	-	-	-	512310	512310	-
Sport Management 128									
Recreation & Leisure Services Administration	Recreation and Leisure Services Administration		220404	310301	-	-	-	-	-
Sport Management	Sport Management **		220410	310504	310504	-	-	310504	-
Educational Leadership & Policy Studies 129									
Research & Evaluation Methods	Program Evaluation		220601	-	130601	-	-	130601	-
Higher Education	Higher Education		220602	-	130406	-	130406	130406	-
Educational Leadership and Policy	Educational Leadership/Administration		220604	-	130401	-	130401	130401	-
	Educational Policy, Planning and Analysis		220605	-	130401	-	130401	130401	-
	Education Policy & Evaluation		220614	-	130401	-	130401	130401	-
	Sociocultural and International Development Education Studies		220609	-	130901	-	130901	130901	-

Social Historical and
Philosophical Foundations of
Education

220613 - 130901 - ~~130901~~ 130901 -

HUMAN SCIENCES

Retail Merchandising & Product Development 134

Clothing, Textiles, &
Merchandising

Apparel Design & Technology	252020	190901	190901	-	-	-	-
Apparel Design	252025	-	-	-	-	<190101>	-
Merchandising	252030	190901	190901	-	-	-	-
Retail Merchandising	252035	-	-	-	-	<190101>	-
Textiles	252040	190901	190901	-	-	-	-
Textile Product Development	252045	-	-	-	-	<190101>	-
Retail Merchandising and Product Development	252070	190901	-	-	-	-	-
Global Merchandising and Product Development	252080	-	190901	-	-	-	-

Retail, Merchandising &
Product Development

Apparel Design & Technology	252021	190901	190901	-	-	-	-
Merchandising	252031	190901	190901	-	-	-	-
Textiles	252041	190901	190901	-	-	-	-
Retail Merchandising and Product Development	252071	190901	-	-	-	-	-
Global Merchandising and Product Development	252081	-	190901	-	-	-	-

Nutrition, Food & Exercise Science 135

Food & Nutrition

Dietetics	254440	513101	-	-	-	-	-
Food & Nutrition Science	254440	513101	-	-	-	-	-
Nutrition & Food Science	254445	-	513101	-	-	<190101>	-

Dietetics

Dietetics	254411	513102	-	-	-	-	-
-----------	--------	--------	---	---	---	---	---

Athletic Training

Athletic Training+	254491	510913	-	-	-	-	-
--------------------	--------	--------	---	---	---	---	---

Exercise Science

Exercise Science	254455	310505	-	-	-	-	-
-----------------------------	-------------------	-------------------	---	---	---	---	---

Sports Sciences	254456	-	310505	-	-	-	-
----------------------------	-------------------	---	-------------------	---	---	---	---

Exercise Physiology	254450	-	310505	-	310505	310505	-
--------------------------------	-------------------	---	-------------------	---	-------------------	-------------------	---

Sports Nutrition	254457	-	310505	-	-	-	-
-----------------------------	-------------------	---	-------------------	---	---	---	---

Exercise Science

Exercise Science	254451	260908	-	-	-	-	-
-----------------------------	-------------------	-------------------	---	---	---	---	---

Sports Sciences	254452	-	260908	-	-	-	-
----------------------------	-------------------	---	-------------------	---	---	---	---

Exercise Physiology	254453	-	260908	-	260908	260908	-
--------------------------------	-------------------	---	-------------------	---	-------------------	-------------------	---

Sports Nutrition	254454	-	260908	-	-	-	-
-----------------------------	-------------------	---	-------------------	---	---	---	---

Exercise Physiology

Exercise Science	254465	260908	-	-	-	-	-
------------------	--------	--------	---	---	---	---	---

Sports Sciences	254466	-	260908	-	-	-	-
-----------------	--------	---	--------	---	---	---	---

Exercise Physiology	254467	-	260908	-	260908	260908	-
---------------------	--------	---	--------	---	-------------------	--------	---

Sports Nutrition	254468	-	260908	-	-	-	-
------------------	--------	---	--------	---	---	---	---

Neuroscience

Neuroscience Movement Science	254470	-	-	-	-	<261501>	-
--	-------------------	---	---	---	---	----------	---

Neuroscience Nutrition Science	254475	-	-	-	-	<261501>	-
---	-------------------	---	---	---	---	----------	---

Family & Child Sciences 136

Family and Child
Sciences

Family and Child Sciences	255315	190701	190701	-	-	-	-
Family Relations	255312	-	-	-	-	<190101>	-
Child Development	255320	-	-	-	-	<190101>	-

Marriage and Family
Therapy

Marriage & Family Therapy	255360	-	-	-	-	511505	-
---------------------------	--------	---	---	---	---	--------	---

Human Sciences Interdepartmental

Human Sciences

Human Sciences (not published at D)	250010	-	-	-	-	190101	-
Human Development and Family Science	252055	-	-	-	-	<190101>	-

NURSING

Nursing 140

Nursing

Nursing+	247310	513801	513801	-	-	-	-
Nursing (RN-BSN)	247312	513801	-	-	-	-	-
Nursing - Accelerated BSN	247313	513801	-	-	-	-	-
Nursing - Nurse Educator	247315	-	513801	-	-	-	-
Nurse Leader	247316	-	513801	-	-	-	-

		Nursing - Veterans BSN	247318	513801	-	-	-	-	-
Doctor of Nursing Practice		Nursing - Practice Health Systems Leadership	247320	-	-	-	-	513818	-
		Nursing Practice - Family Nurse Practitioner	247321	-	-	-	-	513818	-

CRIMINOLOGY & CRIMINAL JUSTICE

Criminology & Criminal Justice 141

Criminology	Criminology	349410	430104	430104	-	-	430104	-
	Criminal Justice Studies	349411	-	430104	-	-	-	-
<Note: Joint degree>	Criminology and Social Work	347773	-	430104	-	-	-	-
<Note: Joint degree>	Criminology and Public Administration	347775	-	430104	-	-	-	-
<Note: Joint degree>	Juris Master / Master of Science in Criminology	347776	-	430104	-	-	-	-
Computer Criminology	Computer Criminology - Criminology	349412	430116	-	-	-	-	-

SOCIAL WORK

Social Work 142

Social Work	Social Work	338910		440701	-	-	440701	-
	Social Work, BSW**	338911	440701	-	-	-	-	-
<Note: Joint degree>	Social Work and Public Administration	337772	-	440701	-	-	-	-
<Note: Joint degree>	Social Work and Criminology	337773	-	440701	-	-	-	-
<Note: Joint degree>	Social Work and Business Administration	337774	-	440701	-	-	-	-

LAW

Law 144

Law	Law	313410	-	-	-	-	-	220101
<Note: Joint degree>	Law (Business)	313411	-	-	-	-	-	220101
<Note: Joint degree>	Law (Economics)	313412	-	-	-	-	-	220101
<Note: Joint degree>	Law (International Affairs)	313413	-	-	-	-	-	220101
<Note: Joint degree>	Law (Public Administration)	313414	-	-	-	-	-	220101
<Note: Joint degree>	Law (Urban & Regional Planning)	313415	-	-	-	-	-	220101
<Note: Joint degree>	Law (Social Work)	313416	-	-	-	-	-	220101
<Note: Joint degree>	Law (Library and Information Studies)	313417	-	-	-	-	-	220101
<Note: Joint degree>	Law (Family and Child Sciences)	313418	-	-	-	-	-	220101
<Note: Joint degree>	Law (Sport Management)	313419	-	-	-	-	-	220101
<Note: Joint degree>	Law (Oceanography)	313422	-	-	-	-	-	220101
Law	Juris Master	313423	-	220201	-	-	-	-
American Law for Foreign Lawyers	American Law for Foreign Lawyers	313420	-	220202	-	-	-	-
Environmental Law and Policy	Environmental Law and Policy	313421	-	220207	-	-	-	-
Business Law	Business Law	313430	-	220205	-	-	-	-
<Note: Joint degree>	Juris Master / Master of Science in Information Technology	317771	-	220201	-	-	-	-
<Note: Joint degree>	Juris Master / Master of Science in Criminology	317776	-	220201	-	-	-	-

SOCIAL SCIENCE & PUBLIC POLICY

Economics 164

Economics	Economics**	322210	450601	450601	-	-	450601	-
	Applied Economics**	322211	450601	-	-	-	-	-
Applied Economics	Applied Economics**	322215	-	450602	-	-	-	-

Geography 166

Geography	Geography	324610	450701	450701	-	-	450701	-
	Environmental Studies	324620	450701	-	-	-	-	-
	Environment and Society	324625	030101	-	-	-	-	-
	Geographic Information Systems	324630	-	450701	-	-	-	-
Geographic Information Science	Geographic Information Science	324640	-	450702	-	-	-	-

Urban & Regional Planning 167

Urban and Regional Planning	Urban and Regional Planning	329720	-	040301	-	-	040301	-
<Note: Joint degree>	Urban and Regional Planning/ Public Health	327770	-	040301	-	-	-	-
<Note: Joint degree>	Urban and Regional Planning/ Demography	327771	-	040301	-	-	-	-
<Note: Joint degree>	Urban and Regional Planning/ Public Administration	327777	-	040301	-	-	-	-
<Note: Joint degree>	Urban and Regional Planning/ International Affairs	327779	-	450901	-	-	-	-
Political Science 168								
Political Science	Political Science	324910	451001	451001	-	-	451001	-
	Applied American Politics and Policy	324911	-	451001	-	-	-	-
Public Administration 170								
Public Administration	Public Administration	325110	-	440401	-	-	440401	-
<Note: Joint degree>	Public Administration and Urban and Regional Planning	327777	-	040301	-	-	-	-
<Note: Joint degree>	Public Administration and Health Policy Research	327778	-	440401	-	-	-	-
<Note: Joint degree>	Public Administration and Social Work	327772	-	440401	-	-	-	-
<Note: Joint degree>	Public Administration and Criminology	327775	-	440401	-	-	-	-
Sociology 172								
Sociology	Sociology	329010	451101	451101	-	-	451101	-
	Applied Social Research	329011	-	451101	-	-	-	-
	Sociology of Aging and Health	329012	-	451101	-	-	-	-
Demography 174								
Demography	Demography	328910	-	450501	-	-	-	-
<Note: Joint degree>	Demography/ Urban and Regional Planning	327771	-	040301	-	-	-	-
Social Sciences Interdisciplinary								
Social Science	Social Science	328810	450101	450101	-	-	-	-
Latin-American & Caribbean Studies	Latin-American & Caribbean Studies	328820	050134	-	-	-	-	-
	Latin-American & Caribbean Studies/Business	328821	050134	-	-	-	-	-
Asian Studies	Asian Studies	321710	050103	050103	-	-	-	-
	Asian Studies/Business	321711	050103	-	-	-	-	-
<Note: Joint degree>	Health Policy Research/ Public Administration	327778	-	440401	-	-	-	-
International Affairs	International Affairs	329910	450901	450901	-	-	-	-
<Note: Joint degree>	International Affairs/ Urban & Regional Planning	327779	-	450901	-	-	-	-
Russian & East European Studies	Russian & East European Studies	328710	050105	050105	-	-	-	-
Public Health	Public Health	326120	-	512201	-	-	-	-
<Note: Joint degree>	Public Health/ Urban and Regional Planning	327770	-	040301	-	-	-	-
African-American Studies	African American Studies	328110	050201	-	-	-	-	-

COMMUNICATION AND INFORMATION

Communication 182

Communication	Media Production**	410103	090199	-	-	-	-	-
	Advertising**	410105	090199	-	-	-	-	-
	Mass Communication	410111	-	090199	-	-	090199	-
	Speech Communication	410112	-	-	-	-	090199	-
	Communication Theory & Research	410114	-	-	-	-	090199	-
	Media / Communication Studies**	410115	090199	-	-	-	-	-
	Public Relations**	410120	090199	-	-	-	-	-
	Professional Communications** (Panama City Campus)	410125	090199	-	-	-	-	-
	Integrated Marketing and Management Communication	410133	-	090199	-	-	-	-
	Corporate and Public	410135	-	090199	-	-	-	-

		Communication (Panama City Campus)							
		Media and Communication Studies	440136	-	090199	-	-	-	-
		Digital Media Production**	440137	090199	-	-	-	-	-
Professional Communication		Advertising**	410140	090900	-	-	-	-	-
		Public Relations**	410141	090900	-	-	-	-	-
Communication & Digital Media Studies		Integrated Marketing and Management Communication	410142	-	090900	-	-	-	-
		Media / Communication Studies**	410151	090702	-	-	-	-	-
		Media and Communication Studies	410152	-	090702	-	-	-	-
		Digital Media Production**	410153	090702	-	-	-	-	-
		Public Interest Media & Communication	410154	-	090702	-	-	-	-
Communication Science and Disorders 183									
	Communication Science & Disorders	Communication Science & Disorders***	418510	510204	510204	510204	-	510204	-
Library and Information Studies 138									
	Library & Information Studies	Library Studies	416510	-	250101	-	250101	250101	-
		Information Studies	416520	-	250101	-	250101	250101	-
		Information Studies/School Media	416521	-	250101	-	-	-	-
		Library Studies	416522	-	410401	-	410401	410401	-
		Information Studies	416523	-	110401	-	110401	110401	-
		Information Studies/School Media	416524	-	110401	-	-	-	-
	Information Technology	Information Technology	416530	110103	110103	-	-	-	-
		Information Communication & Technology	416540	110103	-	-	-	-	-
		Juris Master / Master of Science in Information Technology	417771	-	110103	-	-	-	-
<Note: Joint degree>									
MOTION PICTURE ARTS									
Motion Picture Arts 185									
	Motion Picture Arts	Motion Picture Arts - Production++	400102	500602	500602	-	-	-	-
		Animation and Digital Arts++	400103	500602	-	-	-	-	-
	Motion Picture Arts - Writing	Motion Picture Arts - Writing	400111	-	500504	-	-	-	-
MUSIC									
Music 187									
	Music - Liberal Arts	Music - Liberal Arts++	449300	500901	500901	-	-	-	-
		Jazz	449320	500901	-	-	-	-	-
		Sacred Music	449321	500901	-	-	-	-	-
		Commercial Music	449322	500901	-	-	-	-	-
	Music Performance	Music Performance++	447210	500903	500903	-	-	500903	-
		Brass Performance++	447231	500903	500903	-	-	500903	-
		Harp Performance++	447232	500903	500903	-	-	500903	-
		Organ Performance++	447233	500903	500903	-	-	500903	-
		Percussion Performance++	447234	500903	500903	-	-	500903	-
		Piano Performance++	447235	500903	500903	-	-	500903	-
		String Performance++	447236	500903	500903	-	-	500903	-
		Voice Performance++	447237	500903	500903	-	-	500903	-
		Woodwind Performance++	447238	500903	500903	-	-	500903	-
		Harpichord Performance++	447239	500903	500903	-	-	500903	-
		Jazz Studies	447221	-	500903	-	-	-	-
		Choral Conducting	447280	-	500903	-	-	-	-
		Instrumental Conducting	447281	-	500903	-	-	-	-
		Accompanying	447285	-	500903	-	-	-	-
		Music Theatre - Music++	447290	500903	500903	-	-	-	-
		Piano Pedagogy++	447209	500903	500903	-	-	-	-

		Guitar Performance++	447241	500903	-	-	-	-	-
Music Theory and Composition		Music Composition++	447220	500904	500904	-	-	500904	-
		Music Theory	447270	500904	500904	-	-	500904	-
Musicology		Musicology	447271	-	500905	-	-	500905	-
Opera Production		Opera	447240	-	500908	-	-	-	-
		Opera Production	447242	-	500908	-	-	-	-
Music Therapy		Music Therapy++	447260	512305	512305	-	-	-	-
Music Education		Music Education**	447250	131312	131312	-	-	131312	-
		Choral Music Education**	447251	131312	-	-	-	-	-
		Instrumental Music Education**	447252	131312	-	-	-	-	-
Arts Administration {also in Art Education}		Arts Administration - Music	447208	-	501002	-	-	-	-

FINE ARTS

Theatre 189

Theatre	Theatre++	428010	500501	500501	-	-	500501	-
	Costume Design	428015	-	500501	-	-	-	-
	Acting++	428020	500501	500501	-	-	-	-
	Directing	428025	-	500501	-	-	-	-
	Lighting Design	428035	-	500501	-	-	-	-
	Scenic Design	428040	-	500501	-	-	-	-
	Technical Production	428045	-	500501	-	-	-	-
	Theatre Management	428050	-	500501	-	-	-	-
	MS for Theatre Educators	428060	-	500501	-	-	-	-
	Musical Theatre - Theatre++	428080	500501	-	-	-	-	-
	Music Theatre - Theatre	428081	500501	-	-	-	-	-

Interior Design 192

Interior Design	Interior Design**	422610	500408	500408	-	-	-	-
	Interior Design/MFA	422612		500408				

Art 196

Studio Art	Studio Art++	420610	500702	500702	-	-	-	-
	Studio Art BA	420620	500702	-	-	-	-	-
Graphic Design	Graphic Design	420630	500409	-	-	-	-	-

School of Dance 194

Dance	Dance++	422810	500301	500301	-	-	-	-
	Studio and Related Studies	422812	-	500301	-	-	-	-
	American Dance Studies	422813	-	500301	-	-	-	-

Art History 193

History & Criticism of Art	Art History	420810	500703	500703	-	-	500703	-
	Museum and Cultural Heritage Studies	420811	-	500703	-	-	-	-

Art Education 197

Art Education	Art Education	420711	131302	131302	-	131302	131302	-
	Art Teaching	420714	-	131302	-	-	-	-
	Museum Education and Visitor-Centered Exhibitions	420715	-	131302	-	-	131302	-
Arts Administration {also in Music}		Arts Administration - Art	420712	-	501002	-	-	-
Art Therapy	Art Therapy	420713		512301	-	-	-	-

ENGINEERING

Chemical & Biomedical 214

Chemical Engineering	Chemical Engineering	556010	140701	140701	-	-	140701	-
	Chemical - Environmental Engineering	556011	140701	-	-	-	-	-
	Chemical - Bioengineering	556012	140701	-	-	-	-	-
	Chemical - Materials Engineering	556013	140701	-	-	-	-	-
	Chemical - Biomedical Engineering	556014	140701	-	-	-	-	-
	Biomedical Engineering	556080	-	140501	-	-	140501	-

Civil and Environmental Engineering 215

Civil Engineering	Civil Engineering	555010	140801	140801	-	-	140801	-
-------------------	-------------------	--------	--------	--------	---	---	--------	---

	Environmental Engineering-Civil	555020	140801	-	-	-	-	-
	Civil Engineering - MEng	555030	-	140801	-	-	-	-
Electrical and Computer Engineering 216								
	Electrical Engineering	558010	141001	141001	-	-	141001	-
	Computer Engineering	558020	140901	-	-	-	-	-
Industrial and Manufacturing Engineering 217								
	Industrial Engineering	557010	143501	143501	-	-	143501	-
	Engineering Management	557011	-	143501	-	-	-	-
	Global Manufacturing Engineering Management in Orthodontics and Prosthetics	557012	-	143501	-	-	-	-
	Orthodontics and Prosthetics	557013	-	143501	-	-	-	-
Mechanical Engineering 218								
	Mechanical Engineering	554010	141901	141901	-	-	141901	-
	Computational Materials Science and Mechanics	554011	-	-	-	-	141901	-
	Sustainable Energy	554012	-	141901	-	-	-	-

MEDICINE

Medicine 200								
	Medicine	Medicine	621201	-	-	-	-	511201
Health Sciences Interdisciplinary								
	Biomedical Sciences	Biomedical Sciences	620100	-	-	-	260102	-
	Research in Biomedical Sciences	Research in Biomedical Sciences	620101	-	260102	-	-	-
	Bridge to Clinical Medicine	Bridge to Clinical Medicine	620102	-	260102	-	-	-
	Neuroscience - BMS	Neuroscience - BMS	620110	-	-	-	260102	-
	Neuroscience	Neuroscience - BMS	620112	-	-	-	261501	-
	Interdisciplinary Medical Sciences	Pre-Health Professions	620120	510000	-	-	-	-
		Patient Care in the Community	620122	510000	-	-	-	-
		Health Management, Policy, and Information	620124	510000	-	-	-	-
	Physician Assistant Practice	Physician Assistant Practice	620130	-	510912	-	-	-

APPLIED STUDIES (Panama City Campus)

Recreation & Leisure Services Administration	Recreation and Leisure Services Administration + (Recreation and Leisure Services Administration Mapping)	461004	310301	-	-	-	-	-
-	Mapping	461064	310301	-	-	-	-	-
	Recreation, Tourism, and Events	461005	310301	-	-	-	-	-
	Recreation, Tourism, and Events - Mapping	461065	310301	-	-	-	-	-
	Public Safety and Security	Police Science	462011	430107	-	-	-	-
		Law Enforcement Operations	462012	430107	-	-	-	-
		Law Enforcement Intelligence	462013	430107	-	-	-	-
		Crime Scene Investigations	462014	430107	-	-	-	-
	Professional Communication	Professional Communication (P.C. Campus Only)	463001	090900	-	-	-	-
	Corporate & Public Communication	Corporate & Public Communication (P.C. Campus Only)	463002	-	090900	-	-	-
	Nurse Anesthesia	Nurse Anesthesia	468001	-	513804	-	-	-

NOTES:

* Can exceed 120 Hour Limitation

+ Limited enrollment by specialized accreditation or licensure requirement

++ Limited Enrollment by audition or portfolio review (special talent)

** Limited enrollment

Indicates removal pending some action not yet finalized, or temporary suspension, or major not published.

		BACH	MAST	ADVM	SPEC	DOCT	PROF
1 Degree Programs:	Tota						
	Fiel	115	127	1	26	81	3
ds Offered at FSU:		217	277	1	41	164	12

VII ANALYSIS OF STUDENT ENROLLMENT

Student enrollment is the single most important measure used to develop facility requirements for a university. Enrollment is measured using full-time equivalent (FTE) enrollment. Each FTE is equivalent to 40 credit hours per academic year for undergraduates and 32 credit hours for graduates. First, FTE enrollment is reported by site and then all enrollments not requiring facilities is deducted to determine the Capital Outlay FTE (COFTE). The level of enrollment used for Survey purposes is the level for the fifth year beyond the year the Survey is conducted. For this Survey, the projected enrollment used is for academic year 2022-23. Table 4 represents the actual enrollment by discipline and level for the base year 2016-2017. Table 5 identifies the approved Enrollment Plan based on the actual enrollment of 2015-2016 and the projected enrollment for 2016-2017 to 2022-2023 with the anticipated changes in enrollment by level.

TABLE 4

FTE Enrollment by Discipline and Level

MAIN CAMPUS FISCAL YEAR 2015-2016

COLLEGE/SCHOOL	LOWER US FTE	UPPER US FTE	GRAD I US FTE	GRAD II US FTE	TOTAL US FTE
College of Arts and Sciences					
Aerospace Studies	6.3	6.6	0	0	12.9
Anthropology	134.7	72.8	0	0	207.5
Arabic	24	6.9	0.8	0.9	32.6
Arts and Sciences Interdisciplinary	309.5	16.9	0	0	326.4
Biological Sciences	881.1	547.2	21.8	123.6	1,573.70
Chemistry	874.7	208.3	2.9	198.2	1,284.10
Chinese	22.3	22.9	1.4	0	46.6
Classics	185.2	233.2	18	29.5	465.9
Computer Science	406.7	421	93.5	59.6	980.8
Earth, Ocean, and Atmospheric Science	325.8	119.6	59.4	74.1	578.9
English	1,044.90	694.4	45.9	114.3	1,899.50
French	162.7	45	10.4	8.8	226.9
Geophysical Fluid Dynamics	0	0	0	11.7	11.7
German	66.9	18.7	8.6	1.8	96
Greek	2.7	0.5	2	2.4	7.6
Hebrew	9.6	0	0	0	9.6
History	407.9	383.4	24.3	51.8	867.4
History/Philosophy of Science	0	17.8	0.3	0.6	18.7
Humanities	156.5	161.7	1	5.2	324.4
Italian	76	24.3	4.1	0.4	104.8
Japanese	43.5	28.4	1	0.1	73
Latin	23.9	1.4	3.3	2.8	31.4
Mathematics	1,322.10	164.7	25.5	115.2	1,627.50
Military Science	7.6	13.5	0	0	21.1
Modern Languages	0	25.2	13.5	6	44.7
Molecular Biophysics	0	0	2.2	25	27.2
Philosophy	399.3	127.3	9	42	577.6
Physics	617	61.5	6.8	185.9	871.2

TABLE 4 (Continued)

COLLEGE/SCHOOL	LOWER US FTE	UPPER US FTE	GRAD I US FTE	GRAD II US FTE	TOTAL US FTE
College of Arts and Sciences (Continued)					
Portuguese	2	8.8	0.4	0.4	11.6
Psychology	464	1,099	10.7	171.4	1,745.10
Religion	322.1	229.1	14.5	54.8	620.5
Russian	23.6	31.1	4.3	0.8	59.8
Scientific Computing	0	13.6	10.6	36.7	60.9
Slavic	0	16.6	0.3	0	16.9
Spanish	543.4	83.8	6.9	18	652.1
Statistics	572	95.9	64	102.6	834.5
Totals	9,438	5,001	467	1,445	16,351
College of Business					
Accounting	375.5	341.1	76.9	12.7	806.2
Dept of Ent, Strat, and Info Sys	11.9	169	39.5	3.2	223.6
Entrepreneurship, Strategy and Information Systems	17.1	147.4	18.4	3.9	186.8
Finance	0	655	94.3	12.7	762
Hospitality	204.9	299.1	1.8	0	505.8
Management	2.2	490.4	42.7	9.9	545.2
Marketing	0	631.6	93.4	12.3	737.3
Risk Management and Insurance	195.9	483	65.4	2.7	747
Totals	807.5	3216.6	432.4	57.4	4513.9
College of Communication and Information					
Communication	425.7	677.6	102.5	18.5	1,224.30
Communication Sci and Disorders	91.2	117.6	190.4	6.4	405.6
Information	17.5	109	72.9	9.9	209.3
Library and Information Studies	31.9	138.7	114.5	18.9	304
Totals	566.3	1042.9	480.3	53.7	2143.2
College of Criminology and Criminal Justice					
Criminology	62.1	751.1	118	69.3	1,000.50
Totals	62.1	751.1	118	69.3	1000.5
College of Education					
Educational Leadership	74.5	25	105.8	119.8	325.1
Educational Psychology	38.5	136.3	100.3	275.4	550.5
Sports Management	104.3	224.7	95.4	21.4	445.8
Teacher Education	57.3	363.6	151	53.3	625.2
Totals	274.6	749.6	452.5	469.9	1946.6

TABLE 4 (Continued)

COLLEGE/SCHOOL	LOWER US FTE	UPPER US FTE	GRAD I US FTE	GRAD II US FTE	TOTAL US FTE
College of Fine Arts					
Art	108.3	113.8	26.7	0.4	249.2
Art Education	0	6.7	46.6	17	70.3
Art History	94.5	73.3	22.7	19.7	210.2
Dance	84.3	47.1	22.7	0.1	154.2
Interior Architecture and Design	32.8	77.8	27.6	0	138.2
Theatre	96.4	87.8	33.6	6.1	223.9
Totals	416.3	406.5	179.9	43.3	1046
College of Human Sciences					
Family and Child Sciences	254.4	341.1	12.1	25.7	633.3
Nutrition, Food and Exercise Sciences	173.8	473.7	56.5	31.8	735.8
Retail Merch and Product Dev	48.1	258.2	4.6	0	310.9
Totals	476.3	1073	73.2	57.5	1680
College of Law					
Law	0	0	13.1	387.8	400.9
Law School	0	0	12.2	335.5	347.7
Totals	0	0	25.3	723.3	748.6
College of Motion Picture Arts					
Film School	17.5	23.7	30.1	0	71.3
Motion Picture Arts	34.3	47.4	59	0	140.7
Totals	51.8	71.1	89.1	0	212
College of Music					
Music	490.4	284.8	139.7	144	1,058.90
Totals	490.4	284.8	139.7	144	1058.9
College of Nursing					
Nursing	0	202.4	16.8	76.1	295.3
Totals	0	202.4	16.8	76.1	295.3
College of Social Sciences and Public Policy					
African-American Studies	20.6	2.9	0	0	23.5
Asian Studies	0	0	0.8	0	0.8
Demography	0	0	2.5	0	2.5
Economics	651.2	409.8	27.7	60.5	1,149.20
Geography	260.8	167.8	28.4	28.6	485.6

TABLE 4 (Continued)

COLLEGE/SCHOOL	LOWER US FTE	UPPER US FTE	GRAD I US FTE	GRAD II US FTE	TOTAL US FTE
College of Social Sciences and Public Policy (Continued)					
Health Policy Research	0	0	11.5	0.5	12
International Affairs	15.9	101.2	20.3	0.5	137.9
Political Science	174.1	374.3	49.7	35.6	633.7
Public Administration	0	344	152.8	28.4	525.2
Russian/East European Studies	0	0	0.6	0	0.6
Social Sciences	2.4	36	7.4	0.3	46.1
Sociology	249.2	522.5	23.1	50.9	845.7
Urban Planning	35.4	66.4	80.3	16.4	198.5
Totals	1,409.60	2,024.90	405.10	221.70	4,061.30
College of Social Work					
Social Work	0.8	200.9	459.6	21.8	683.1
Totals	0.8	200.9	459.6	21.8	683.1
MAIN CAMPUS Totals	13,994	15,025	3,339	3,383	35,741

TABLE 5
Analysis of Planned Enrollment Change

	2015-16 ACTUAL	2016-17 ESTIMATE*	2017-18 PLAN	2018-19 PLAN	2019-20 PLAN	2020-21 PLAN	2021-22 PLAN	2022-23 PLAN	Planned Annual Growth Rate*
STATE FUNDABLE									
<u>RESIDENT</u>									
LOWER	12,618	12,699	12,720	12,750	12,780	12,810	12,840	12,870	0.20%
UPPER	14,960	15,004	15,100	15,200	15,300	15,400	15,500	15,600	0.70%
GRAD I	2,610	2,639	2,690	2,740	2,790	2,850	2,910	2,970	2.00%
GRAD II	2,577	2,544	2,590	2,640	2,690	2,740	2,790	2,850	1.90%
TOTAL	32,764	32,885	33,100	33,330	33,560	33,800	34,040	34,290	0.70%
<u>NON RESIDENT</u>									
LOWER	1,164	1,278	1,290	1,300	1,310	1,320	1,330	1,340	0.80%
UPPER	922	1,123	1,130	1,140	1,150	1,160	1,170	1,180	0.90%
GRAD I	745	780	800	820	840	860	880	900	2.40%
GRAD II	997	1,020	1,040	1,060	1,080	1,100	1,120	1,140	1.90%
TOTAL	3,829	4,201	4,260	4,320	4,380	4,440	4,500	4,560	1.40%
<u>TOTAL</u>									
LOWER	13,782	13,977	14,010	14,050	14,090	14,130	14,170	14,210	0.30%
UPPER	15,881	16,127	16,230	16,340	16,450	16,560	16,670	16,780	0.70%
GRAD I	3,355	3,419	3,490	3,560	3,630	3,710	3,790	3,870	2.10%
GRAD II	3,575	3,563	3,630	3,700	3,770	3,840	3,910	3,990	1.90%
TOTAL	36,593	37,086	37,360	37,650	37,940	38,240	38,540	38,850	0.80%
NOT STATE FUNDABLE									
LOWER	993	988	1,000	1,000	1,000	1,000	1,000	1,000	0.00%
UPPER	957	1,136	1,100	1,100	1,100	1,100	1,100	1,100	0.00%
GRAD I	374	397	400	450	500	550	600	650	10.20%
GRAD II	13	15	20	20	20	20	20	20	0.00%
TOTAL	2,338	2,536	2,520	2,570	2,620	2,670	2,720	2,770	1.90%

Note: Full-time Equivalent (FTE) student is a measure of instructional activity that is based on the number of credit hours that students enroll. FTE is based on the standard national definition, which divides undergraduate credit hours by 30 and graduate credit hours by 24. Pursuant to section 1013.31, Florida Statutes, this data is used as a key factor in the calculation of facility space needs for university educational plant surveys. Note*: The Planned Annual Growth Rate is a compounded rate based on the following formula: (2022-23 value divided by the 2017-18 value) to the (1/5) exponent minus one.

VIII INVENTORY OF EXISTING SITES AND BUILDINGS

The overview of the University includes a general description of the Sites where educational program activities are carried out by the University. The assignable space within educational buildings accommodates instructional, academic support, and institutional support functions of the university. As indicated within the Space Needs Assessment section, the following types of assignable spaces accommodate these functions:

<u>INSTRUCTIONAL</u>	<u>ACADEMIC SUPPORT</u>	<u>INSTRUCTIONAL SUPPORT</u>
Classroom	Study	Office and Computer
Teaching Laboratories	Instructional Media	Campus Support Services
Research Laboratories	Auditorium / Exhibition	
	Teaching Gymnasium	

Table 6 provides information about the Net Assignable Square Feet (NASF) by Sites which make up Main Campus. Space which has a DEMO STATUS of 'CONTINUING' is satisfactory space that will continue to be used and is included in the inventory of space. Space which has a DEMO STATUS of 'PLANNED TERM: 2018' has been singled out for each Site where this type space occurs and is removed from the total space which is considered satisfactory space in the current inventory.

Table 7 identifies the amount of satisfactory eligible space, by space type, for each building which supports the above stated functions. As stated within the Space Needs Assessment section eligible space refers to whether the space meets a need identified as a formula generated space need. The buildings included within this table are only those consider to be part of Main Campus.

Both tables are derived from the BOG Space Data Management Reports.

TABLE 6

All Net Assignable Square Feet within EPS Categories by Site (Main Campus)

SITE ID	SITE NAME	CATEGORIES OF SPACE										SPACE EXCLUDED	
		CLASSROOM	TEACHING LAB	STUDY	RESEARCH LAB	OFFICE/ COMPUTER	AUD./ EXHIBIT	INSTRUCT. MEDIA	GYM	CAMPUS SUPPORT	TOTAL	NO	YES
0001	MAIN CAMPUS	311,618	364,566	332,828	425,334	1,061,339	107,254	1,141	39,793	98,558	2,742,431	2,725,447	33,217
	TOTAL SITE												
0002	FSU MARINE LAB	106	828	146	11,406	4,617	-	-	-	1,054	18,157	18,979	-
	TOTAL SITE												
0005	MISSION ROAD STATION	-	-	-	9,260	372	-	-	-	1,314	10,946	9,632	1,314
	TOTAL SITE												
0008	SOUTHWEST CAMPUS	-	9,691	-	15,162	14,626	5,818	17,867	340	20,945	84,449	71,298	13,151
	TOTAL SITE												
0012	BELLE VUE	6,099	47,287	-	-	9,720	9,547	-	-	939	73,592	73,592	-
	TOTAL SITE												
0013	RIDGEWAY	4,048	-	3,000	-	4,342	1,673	-	4,307	18,339	35,709	35,709	-
	TOTAL SITE												
0018	INNOVATION PARK	2,457	3,699	1,069	176,629	186,274	-	158	-	-	370,286	271,317	98,969
	TOTAL SITE												
0019	GADSDEN COUNTY	-	4,167	-	-	2,204	-	-	-	-	6,371	6,371	-
	TOTAL SITE												
0041	NORTHWEST CAMPUS	-	-	5,711	7,511	41,766	-	-	-	9,584	64,572	64,572	-
	TOTAL SITE												
0042	NORTH CAMPUS	-	1,920	-	8,349	3,529	516	-	-	421	14,735	14,735	-
	TOTAL SITE												
	MAIN CAMPUS' SITES GRAND TOTAL	324,328	432,158	342,754	653,651	1,328,789	124,808	19,166	44,440	151,154	3,421,248	3,291,652	146,651

TABLE 7

All Net Assignable Square Feet within EPS Categories by Building (Main Campus)

SITE ID SITE NAME		ROOM												CAMPUS	
0001 MAIN CAMPUS															
BLDG ID	BLDG NAME	AVAILABLE	DEMO STATUS	CLASSROOM	TEACHING LAB	STUDY	RESEARCH LAB	OFFICE/ COMPUTER	AUDITORIUM/ EXHIBITION	INSTRUCT MEDIA	GYMNASIUM				
0001	JAMES D.WESTCOTT JR. MEMORIAL BUILDING	Y	CONTINUING	16,939	4,084	1,119	3,099	43,163	32,073						
0002	GUY LINTON DIFFENBAUGH BUILDING	Y	CONTINUING	12,645	2,343	76	66	16,059	3,835				308		
0003	ARTHUR WILLIAMS BUILDING	Y	CONTINUING	902	434	1,485		18,179	3,044						
0004	WILLIAM GEORGE DODD HALL	Y	CONTINUING	1,360	733			13,608							
0005	FRANCIS W. EPES HALL	Y	CONTINUING	2,824	5,890		246	14,571							
0006	WINTHROP N. KELLOGG RESEARCH BUILDING	Y	CONTINUING	3,732	24,552	1,603		10,996	29,463				93		
0007	FINE ARTS BUILDING	Y	CONTINUING	24,325	8,023	763	1,854	57,205		504					
0008	RAYMOND F. BELLAMY BUILDING	Y	CONTINUING		561	163	24,694	4,838							
0009	BIOMEDICAL RESEARCH FACILITY	Y	CONTINUING					12,800							
0011	RODERICK K. SHAW BUILDING	Y	CONTINUING	20,921	30,766	16,441		15,882	1,165						
0017	WILLIAM H. JOHNSTON BUILDING	Y	CONTINUING	3,460	4,296	9,440		11,356							
0019	LOUIS SHORES BUILDING	Y	CONTINUING	1,291	584	49,578	524	20,722							
0020	PAUL A. M. DIRAC SCIENCE LIBRARY	Y	CONTINUING	16,428				16,608							
0023	CHARLES A. ROVETTA BUILDING	Y	CONTINUING	4,090	38,108			8,494					2,076		
0025	KATHERINE WILLIAMS MONTGOMERY GYMNASIUM	Y	CONTINUING	3,893	1,035	3,131		7,438							
0028	NORMAN E. THAGARD HEALTH CENTER BUILDING	Y	CONTINUING					4,264							
0028	NORMAN E. THAGARD HEALTH CENTER BUILDING	N	CONTINUING					2,100					2,425		
0030	CENTRAL UTILITIES PLANT	Y	CONTINUING	16,984	2,724	707		11,197							
0032	B.K. ROBERTS HALL	Y	CONTINUING	5,298	30,206	263		2,293							
0035	KATHERINE B. HOFFMAN TEACHING LABORATORY OF CHEMISTRY	Y	CONTINUING	3,341	1,035	448	9,616	20,564					2,289		
0036	GROVER LEE ROGERS BUILDING	Y	CONTINUING	5,579				98							
0037	JAMES ROBERT FISHER LECTURE HALL	Y	CONTINUING				70,804	17,531							
0038	KARL DITTMER LABORATORY OF CHEMISTRY	Y	CONTINUING		2,804	1,412	34,367	8,779							
0039	BIOLOGY UNIT I	Y	CONTINUING	4,971	9,625	3,337	349	11,243							
0040	VIVIAN M. DUXBURY HALL	Y	CONTINUING		27	1,767	21,815	23,110							
0041	JAMES VELMA KEEN BUILDING	Y	CONTINUING				28,290	5,831							
0042	LEROY COLLINS RESEARCH BUILDING	Y	CONTINUING	5,254	10,867		764	139							
0045	HAROLD F. RICHARDS UNDERGRADUATE PHYSICS LABORATORY BUILDING	Y	CONTINUING	123		31,991		4,554							
0047	LAW LIBRARY	Y	CONTINUING	1,407				5,608							
0048	LAW ROTUNDA	Y	CONTINUING		938			3,090	1,230						
0049	DODD LECTURE HALL	Y	CONTINUING												
0050	MODE L. STONE BUILDING	Y	CONTINUING	13,616	6,791	954		45,840		194					
0052	CHARLES A. ROVETTA BUILDING	Y	CONTINUING	5,223	6,862	731		25,934							
0054	WILEY L. HOUSEWRIGHT MUSIC BUILDING	Y	CONTINUING	3,151	27,977	13,130	626	12,880					32		
0055	MILTON CAROTHERS HALL	Y	CONTINUING	7,309	8,534	4,345	213	26,616							
0057	CLAUDE PEPPER BUILDING	Y	CONTINUING		690	6,090		10,305	10,372						
0070	PARKING GARAGE 1	Y	CONTINUING					3,727							
0072	ROWENA LONGMIRE STUDENT ALUMNI BUILDING	Y	CONTINUING	352	900			14,910	2,118						

TABLE 7

All Net Assignable Square Feet within EPS Categories by Building (Main Campus)

SITE ID SITE NAME		ROOM AVAILABLE											CAMPUS SUPPORT	
0001 MAIN CAMPUS (CONTINUED)														
BLDG ID	BLDG NAME	Y	CONTINUING	CLASSROOM	TEACHING LAB	STUDY	RESEARCH LAB	OFFICE/ COMPUTER	AUDITORIUM/ EXHIBITION	INSTRUCT MEDIA	GYMNASIUM	CAMPUS SUPPORT		
0076	WILLIAM A. TANNER HALL	Y	CONTINUING					9,307			452	2,428		
0077	HERBERT D. MENDENHALL MAINTENANCE COMPLEX	Y	CONTINUING					17,972				34,048		
0078	HERBERT D. MENDENHALL MAINTENANCE COMPLEX	Y	CONTINUING					3,460				7,643		
0086	PEARL TYNER WELCOME CENTER	Y	CONTINUING					863						
0089	KARL O. KUERSTEINER MUSIC BUILDING	Y	CONTINUING	1,504	20,165	565	2,713	14,746		242				
0091	THE MCINTOSH TRACK AND FIELD BUILDING	Y	CONTINUING				1,886	576						
0100	DOAK S. CAMPBELL STADIUM	Y	CONTINUING				426							
0113	F. WILSON CARRAWAY SR. BUILDING	Y	CONTINUING	4,014	1,604	332	5,861	9,021						
0114	ENGINEERING LAB BUILDING	Y	CONTINUING				6,106	861						
0116	JAMES J. LOVE BUILDING	Y	CONTINUING	6,986	6,562	2,543	6,410	31,817						
0132	ROBERT HENRY TULLY GYMNASIUM	Y	CONTINUING	3,829	1,361			5,855			38,415			
0134	ROBERT MANNING STROZIER LIBRARY	Y	CONTINUING	763	3,242	148,327		11,514		201		183		
0135	MARGARET R. SANDELS BUILDING	Y	CONTINUING	9,090	12,448	524	2,074	13,601	1,294					
0146	MICHAEL KASHA LABORATORY	Y	CONTINUING				13,907	9,119						
0202	VILLAGE GREEN HOBBY-HARRISON/CAWTHON HOUSE	Y	CONTINUING					1,210						
0203	VILLAGE GREEN CALDWELL HOUSE	Y	CONTINUING			313		2,764						
0204	VILLAGE GREEN DAMON HOUSE	Y	CONTINUING					2,207						
0205	VILLAGE GREEN AUSLEY HOUSE	Y	CONTINUING			374		1,327						
0223	UNIVERSITY CENTER - BUILDING A	Y	CONTINUING	297	19,238	2,741	2,301	97,995			440			
0224	UNIVERSITY CENTER - BUILDING B	Y	CONTINUING	2,901	3,857	268		8,607	1,334					
0225	UNIVERSITY CENTER - BUILDING C	Y	CONTINUING	4,929	10,383	437	3,189	65,333			486	1,396		
0226	UNIVERSITY CENTER - BUILDING D	Y	CONTINUING	6,899	2,562			1,400						
0237	CENTRAL UTILITIES PLANT STORAGE	Y	CONTINUING									128		
0249	ZONE 3 MAINTENANCE	Y	CONTINUING					525				871		
0255	WESTCOTT WELCOME CENTER	Y	CONTINUING					76						
0264	MODERN LANGUAGES	Y	CONTINUING					1,066						
0292	FLAMMABLE STORAGE	Y	CONTINUING											
0293	HAZARDOUS WASTE FACILITY	Y	CONTINUING									220		
0294	ISADORE HECHT HOUSE	Y	CONTINUING									792		
0378	PARKING GARAGE 2	Y	CONTINUING	5				269				450		
0379	STUDENT SERVICES BUILDING	Y	CONTINUING		2,780									
0394	GUS A. STAVROS CENTER FOR ECONOMIC EDUCATION	Y	CONTINUING			1,048		13,631						
0431	MENDENHALL ANNEX	Y	CONTINUING					2,712				187		
0436	THEATRE (FINE ARTS) ANNEX	Y	CONTINUING	742	5,768	620		359				381		
0437	EMPLOYEE ASSISTANCE PROGRAM BUILDING	Y	CONTINUING					3,139						
0438	ART TEACHING LABS	Y	CONTINUING		2,612			1,434						
0443	MARRIAGE AND FAMILY CLINIC	Y	CONTINUING					438						
								277						

TABLE 7

All Net Assignable Square Feet within EPS Categories by Building (Main Campus)

SITE ID SITE NAME		ROOM											TEACHING				RESEARCH		OFFICE/		AUDITORIUM/		INSTRUCT		GYMNASIUM		CAMPUS	
BLDG ID	BLDG NAME	AVAILABLE	DEMO STATUS	CLASSROOM	LAB	STUDY	LAB	STUDY	LAB	COMPUTER	EXHIBITION	MEDIA	COMPUTER	LAB	COMPUTER	EXHIBITION	LAB	COMPUTER	EXHIBITION	EXHIBITION	EXHIBITION	EXHIBITION	EXHIBITION	EXHIBITION	EXHIBITION	EXHIBITION	EXHIBITION	EXHIBITION
0001	MAIN CAMPUS (CONTINUED)																											
0454	LIBRARY TECHNOLOGY SERVICES	Y	CONTINUING	1,451		10,426				2,200																		
0465	ALUMNI CENTER FACILITY	Y	CONTINUING							5,465																		
0467	FDLE MAIL FACILITY	Y	PLANNED TERM: 2018																									
0470	THE LAB - BUILDING A	Y	CONTINUING							797	3,685																	
0471	THE LAB - BUILDING B	Y	CONTINUING		2,429																							
0476	STATE STORAGE WAREHOUSE	Y	CONTINUING							1,267																		
0478	MASTER CRAFTSMAN STUDIO	Y	CONTINUING		3,594					279	490																	
0490	WAREHOUSE 3	Y	CONTINUING							941																		
0945	TRAINING CENTER AT STADIUM PLACE	Y	CONTINUING							1,212																		
4000	CAGE WASH FACILITY	Y	CONTINUING							288																		
4001	JOHN E. THRASHER BUILDING	Y	CONTINUING	1,856	24,878	4,911				42,885																		
4002	COLLEGE OF MEDICINE RESEARCH BUILDING	Y	CONTINUING	3,374	10,642					21,875																		
4003	DURELL PEADEN AUDITORIUM	Y	CONTINUING								3,752																	
4004	PSYCHOLOGY DEPARTMENT BUILDING	Y	CONTINUING	5,300	3,155	779				35,018	106																	
4005	PSYCHOLOGY DEPARTMENT AUDITORIUM	Y	CONTINUING	361							1,979																	
4007	JAMES E. JIM KING JR. LIFE SCIENCES BUILDING	Y	CONTINUING	365	14,395	4,058				17,636	2,673																	
4008	CHEMICAL SCIENCE LABORATORIES	Y	CONTINUING	46,363	2,955	2,518				14,733	2,100																	
4009	HCB CLASSROOM BUILDING	Y	CONTINUING	987	2,729	2,232				1,726																		
4011	THE ALBERT J. AND JUDITH A. DUNLAP STUDENT SUCCESS CENTER	Y	CONTINUING							20,206																		
4013	SATELLITE UTILITIES PLANT 2	Y	CONTINUING																									
4029	HONORS SCHOLARS & FELLOWS	Y	CONTINUING	3,303		1,667				3,969	3,045																	
4030	HEALTH & WELLNESS CENTER	Y	CONTINUING	12,222						831	3,353																	
4031	GLOBAL & MULTICULTURAL CENTER	Y	CONTINUING	4,316	567	1,332				12,414	2,782																	
4040	LAW SCHOOL ADVOCACY CENTER	Y	CONTINUING	1,017	7,793	243				18,012																		
4041	FULLER WARREN BUILDING	Y	CONTINUING	737	2,104	281				9,425																		
4042	C.C. - WINCHESTER BUILDING	N	CONTINUING							14,404																		
4076	TANNER EQUIPMENT SHED	Y	CONTINUING																									
4077	MAINTENANCE GAS PUMPS	Y	CONTINUING																									
4078	MAINTENANCE SHED 1	Y	CONTINUING																									
4079	MAINTENANCE SHED 2	Y	CONTINUING																									
4080	MAINTENANCE SHED 3	Y	CONTINUING																									
4114	KIRBY W. KEMPER OFF-GRID ZERO EMISSIONS BUILDING	Y	CONTINUING		125																							
4240	MANLEY R. WHITCOMB BAND COMPLEX	Y	CONTINUING							78	1,113																	
4241	CAMPUS GARDEN SHED	Y	CONTINUING																									
4242	CAMPUS GARDEN PAVILION	Y	CONTINUING		460																							
4249	ZONE 3 MAINTENANCE STORAGE	Y	CONTINUING																									
4501	RECYCLING CENTER BUILDING 1	Y	CONTINUING							4,273																		

TABLE 7

All Net Assignable Square Feet within EPS Categories by Building (Main Campus)

SITE ID SITE NAME											
0001 MAIN CAMPUS (CONTINUED)											
BLDG ID	BLDG NAME	ROOM AVAILABLE	DEMO STATUS	CLASSROOM	TEACHING LAB	STUDY	RESEARCH LAB	OFFICE/ COMPUTER	AUDITORIUM/ EXHIBITION	INSTRUCT MEDIA	CAMPUS SUPPORT
4502	RECYCLING CENTER BUILDING 2	Y	CONTINUING					1,715			1,701
4503	RECYCLING CENTER BUILDING 3	Y	CONTINUING					528			1,605
4504	RECYCLING CENTER BUILDING 4	Y	CONTINUING					688			3,001
4546	DONALD L. TUCKER CIVIC CENTER	Y	CONTINUING								838
SITE ID SITE NAME											
0002 FSU MARINE LAB											
BLDG ID	BLDG NAME	ROOM AVAILABLE	DEMO STATUS	CLASSROOM	TEACHING LAB	STUDY	RESEARCH LAB	OFFICE/ COMPUTER	AUDITORIUM/ EXHIBITION	INSTRUCT MEDIA	CAMPUS SUPPORT
0282	MARINE LAB GRADUATES AND GIFT SHOP	Y	CONTINUING					268			
0405	MARINE LAB GUEST HOUSE	Y	CONTINUING								
0406	MARINE LAB ADP/BOATING	Y	CONTINUING					318			
0407	MARINE LAB CLASSROOM AND LABORATORY BUILDING	Y	CONTINUING	106	828	146		828			
0408	MARINE LAB MAIN LABORATORY BUILDING	Y	CONTINUING								
0441	MARINE LAB GREENHOUSE NORTH	Y	CONTINUING					4,192			
0442	MARINE LAB GREENHOUSE SOUTH	Y	CONTINUING					1,199			
0462	MARINE LAB ADMINISTRATION	Y	CONTINUING					1,199			
2200	MARINE LAB FUEL PUMP CANOPY	Y	CONTINUING					926			
2201	MARINE LAB SATS STORAGE	Y	CONTINUING					3,203			
2202	MARINE LAB CARPENTER SHOP	Y	CONTINUING					51			
2203	MARINE LAB FLAMMABLE STORAGE	Y	CONTINUING								
2204	MARINE LAB HUGHES STORAGE	Y	CONTINUING					98			
2205	MARINE LAB THISTLE STORAGE	Y	CONTINUING					123			
2206	MARINE LAB SECURITY	Y	CONTINUING					123			
2207	MARINE LAB STATS PROGRAM STORAGE	Y	CONTINUING								
2208	MARINE LAB DOCK STORAGE SOUTH	Y	CONTINUING					51			
2209	MARINE LAB STORAGE STALLINGS	Y	CONTINUING					51			
2210	MARINE LAB MAINTENANCE STORAGE	Y	CONTINUING								
2211	MARINE LAB STORAGE (CALLINECTES)	Y	CONTINUING								
2212	MARINE LAB STORAGE (GRUBBS)	Y	CONTINUING					51			
2213	MARINE LAB SEAWATER STORAGE	Y	CONTINUING					51			
2214	MARINE LAB HERRKIND GREENHOUSE	Y	CONTINUING					98			
2215	MARINE LAB FACULTY STORAGE	Y	CONTINUING					857			
								464			

TABLE 7

All Net Assignable Square Feet within EPS Categories by Building (Main Campus)

SITE ID SITE NAME											
0005	MISSION ROAD STATION										
BLDG ID	BLDG NAME	ROOM AVAILABLE	DEMO STATUS	CLASSROOM	TEACHING LAB	STUDY	RESEARCH LAB	OFFICE/ COMPUTER	AUDITORIUM/ EXHIBITION	INSTRUCT MEDIA	CAMPUS SUPPORT
0230	MISSION ROAD NEW GREENHOUSE	Y	CONTINUING				2,035				
0366	MISSION ROAD GREENHOUSE	Y	CONTINUING				5,031				
0367	MISSION ROAD MAIN HOUSE	Y	CONTINUING				2,194	372			
SITE ID SITE NAME											
0008	SOUTHWEST CAMPUS										
BLDG ID	BLDG NAME	ROOM AVAILABLE	DEMO STATUS	CLASSROOM	TEACHING LAB	STUDY	RESEARCH LAB	OFFICE/ COMPUTER	AUDITORIUM/ EXHIBITION	INSTRUCT MEDIA	CAMPUS SUPPORT
0056	OPERA SCENE SHOP	Y	CONTINUING		6,298			302			
0061	STORAGE BUILDING - MAG LAB	Y	CONTINUING				4,550				
0062	DAVID MIDDLETON GOLF CENTER	Y	CONTINUING		3,015			523			
0064	FARM - THEATER SCENE STORAGE	Y	CONTINUING						5,364		
0066	FARM - LAB ANIMAL RESOURCES	Y	CONTINUING				4,170				
0068	FARM - ANIMAL PEN	Y	PLANNED TERM: 2018				2,489				
0088	NURSERY GROUNDS GREENHOUSE	Y	CONTINUING								1,641
0295	PROPERTY RECORDS WAREHOUSE 1	Y	CONTINUING					459			5,424
0297	PROPERTY RECORDS WAREHOUSE 2	Y	CONTINUING								6,577
0361	FARM - ROOFING MATERIAL STORAGE	Y	PLANNED TERM: 2018								720
0370	GEORGES WEATHERLY STAGING FACILITY	Y	CONTINUING				3,953				
0371	NURSERY CARPORT	Y	CONTINUING								359
0382	NURSERY BLDG 1 - TRAILER	Y	CONTINUING					361			
0383	NURSERY BLDG 2 - PURPLE	Y	CONTINUING					81			
0384	NURSERY BLDG 3 - TOOLS	Y	CONTINUING								58
0395	NURSERY BLDG 4 - FERTILIZER	Y	CONTINUING								90
0434	NURSERY OFFICE BUILDING	Y	CONTINUING					581			
0493	CONTROLLERS WAREHOUSE	Y	CONTINUING								6,076
8008	MORCOM AQUATICS CENTER	Y	CONTINUING								340
SITE ID SITE NAME											
0012	BELLE VUE										
BLDG ID	BLDG NAME	ROOM AVAILABLE	DEMO STATUS	CLASSROOM	TEACHING LAB	STUDY	RESEARCH LAB	OFFICE/ COMPUTER	AUDITORIUM/ EXHIBITION	INSTRUCT MEDIA	CAMPUS SUPPORT
4500	JOHN R. CARNAGHI ARTS BUILDING	Y	CONTINUING	6,099	47,287			9,720	9,547		437
4551	CARNAGHI ARTS BUILDING A	Y	CONTINUING								177
4552	CARNAGHI ARTS BUILDING B	Y	CONTINUING								177
4553	CARNAGHI ARTS BUILDING C	Y	CONTINUING								148

TABLE 7

All Net Assignable Square Feet within EPS Categories by Building (Main Campus)

SITE ID SITE NAME		ROOM AVAILABLE		DEMO STATUS	CLASSROOM	TEACHING LAB	STUDY	RESEARCH LAB	OFFICE/ COMPUTER	AUDITORIUM/ EXHIBITION	INSTRUCT MEDIA	GYMNASIUM	CAMPUS SUPPORT
0013 RIDGEWAY													
BLDG ID	BLDG NAME	ROOM AVAILABLE	DEMO STATUS	CLASSROOM	TEACHING LAB	STUDY	RESEARCH LAB	OFFICE/ COMPUTER	AUDITORIUM/ EXHIBITION	INSTRUCT MEDIA	GYMNASIUM	CAMPUS SUPPORT	
8050	FHP ACADEMY	N	PLANNED TERM: 2018	4,048		2,582		3,124	1,673		3,419	6,585	
8051	FHP DORM	N	PLANNED TERM: 2018			418		1,218			888	11,754	
SITE ID SITE NAME		ROOM AVAILABLE		DEMO STATUS	CLASSROOM	TEACHING LAB	STUDY	RESEARCH LAB	OFFICE/ COMPUTER	AUDITORIUM/ EXHIBITION	INSTRUCT MEDIA	GYMNASIUM	CAMPUS SUPPORT
0018 INNOVATION PARK													
BLDG ID	BLDG NAME	ROOM AVAILABLE	DEMO STATUS	CLASSROOM	TEACHING LAB	STUDY	RESEARCH LAB	OFFICE/ COMPUTER	AUDITORIUM/ EXHIBITION	INSTRUCT MEDIA	GYMNASIUM	CAMPUS SUPPORT	
0022	NATIONAL HIGH MAGNETIC FIELD LABORATORY GENERAL SCIENCE BUILDING	Y	CONTINUING			635	14,576	52,937					
0069	NATIONAL HIGH MAGNETIC FIELD LABORATORY DC MAGNET BUILDING	Y	CONTINUING				17,677	789					
0269	NATIONAL HIGH MAGNETIC FIELD LABORATORY NMR BUILDING	Y	CONTINUING				1,348	3,353					
0804	BERNARD F. SLIGER BUILDING	Y	CONTINUING		1,937			20,905					
0813	ROBERT M. JOHNSON BUILDING	N	CONTINUING					1,884					
0814	FRANK SHAW BUILDING	Y	CONTINUING				16,647	7,399					
0824	RESEARCH FOUNDATION BUILDING A	Y	CONTINUING	1,035	81	434	19,251	29,797					
0825	RESEARCH FOUNDATION BUILDING B	Y	CONTINUING				4,201	41,899		158			
0826	CAPS DIELECTRICS LAB	Y	CONTINUING		1,052								
0827	CAPS MEDIUM VOLTAGE LAB	Y	CONTINUING				3,442						
0849	CAPS HIGH-BAY LAB	Y	CONTINUING				4,823						
0860	TECHNOLOGY SERVICES BUILDING	Y	CONTINUING					25,057					
SITE ID SITE NAME		ROOM AVAILABLE		DEMO STATUS	CLASSROOM	TEACHING LAB	STUDY	RESEARCH LAB	OFFICE/ COMPUTER	AUDITORIUM/ EXHIBITION	INSTRUCT MEDIA	GYMNASIUM	CAMPUS SUPPORT
0019 GADSDEN COUNTY													
BLDG ID	BLDG NAME	ROOM AVAILABLE	DEMO STATUS	CLASSROOM	TEACHING LAB	STUDY	RESEARCH LAB	OFFICE/ COMPUTER	AUDITORIUM/ EXHIBITION	INSTRUCT MEDIA	GYMNASIUM	CAMPUS SUPPORT	
0486	CRITCHFIELD HALL	Y	CONTINUING		4,167			2,204					
SITE ID SITE NAME		ROOM AVAILABLE		DEMO STATUS	CLASSROOM	TEACHING LAB	STUDY	RESEARCH LAB	OFFICE/ COMPUTER	AUDITORIUM/ EXHIBITION	INSTRUCT MEDIA	GYMNASIUM	CAMPUS SUPPORT
0041 NORTHWEST CAMPUS													
BLDG ID	BLDG NAME	ROOM AVAILABLE	DEMO STATUS	CLASSROOM	TEACHING LAB	STUDY	RESEARCH LAB	OFFICE/ COMPUTER	AUDITORIUM/ EXHIBITION	INSTRUCT MEDIA	GYMNASIUM	CAMPUS SUPPORT	
3401	FSURF ENTREPRENEURIAL BUILDING	Y	CONTINUING				7,049	18,178					
3402	FSU RESEARCH COMPLEX	Y	CONTINUING				462	11,053					
3403	COMMONWEALTH COMMERCE CENTER	N	CONTINUING			5,711		12,535				9,584	

TABLE 7

All Net Assignable Square Feet within EPS Categories by Building (Main Campus)

SITE ID	SITE NAME	BLDG ID	BLDG NAME	ROOM AVAILABLE	DEMO STATUS	CLASSROOM	TEACHING LAB	STUDY	RESEARCH LAB	OFFICE/ COMPUTER	AUDITORIUM/ EXHIBITION	INSTRUCT MEDIA	GYMNASIUM	CAMPUS SUPPORT
0042	NORTH CAMPUS	3801	FACILITY FOR ARTS RESEARCH	Y	CONTINUING		1,920		8,349	3,529	516			421

IX Quantitative (Formula) Space Needs

The basic method used to determine the facilities required by a university to accommodate educational programs, student enrollments, personnel, and services is the Fixed Capital Outlay Space Needs Generation Formula. The space needs formula (Formula) is used for the university's Main Campus (which may be a combination of Sites, as is the case for Florida State University) and provides for three general classifications of space: instructional, academic support, and institutional support. Within these three classifications nine categories of space are included: classroom, teaching laboratory, research laboratory, study, instructional media, auditorium and exhibition, gymnasium, office and administrative data processing, and campus support services. Although each of the nine categories of space is treated individually in the Formula, only three basic methods are used for generating space: space factors for scheduled space, allotments for nonscheduled space, and space provided as a percentage of other space. While the FTE enrollment projection (by Site/Campus) acts as primary generator, the Formula recognizes variations in space requirements derived from discipline groupings, course levels, research programs, and library holdings as well as faculty, staff, and contract and grant positions. The outcome of running the Formula is a campus-wide aggregate of the ten categories of space, based on an individual universities make of students, programs, faculty and staff. A detailed explanation of the Formula is in section C of the Appendices

An alternative method used for the determination of needs is the use of Factors. Factors are the result of the average of the all universities space factors within each of the nine categories. The Factors are then multiplied by the total projected student FTE (less Distance Learning FTE in four categories) the results being the projected space needs for each of the nine categories for each individual university's Main Campus. For this survey we have utilized this alternative method. Table 8 shows the space standards (Factors) used for the generation of need for this Survey for Main Campus. Table 9 shows the net assignable square feet generated when the space standards (Factors) are applied to the projected FTE, by category of space, for Main Campus. Table 10 is a comparison of the existing satisfactory space with the projected space, by category of space, for Main Campus. Table 11 is an analysis of the space which indicates the amount of additional space that will be needed to meet the projected enrollment in the out-year (also referred to as Form B).

TABLE 8
Space Standards Used in Nine Space Category Needs Generation for Main Campus

SPACE CATEGORY	SUS SPACE FACTOR
Classroom	9 ASF per FTE less DL*
Teaching Laboratory	11 ASF per FTE less DL*
Study	14 ASF per FTE
Research Laboratory	19 ASF per FTE
Office	23 ASF per FTE
Auditorium/Exhibition	2 ASF per FTE less DL*
Instructional Media	3 ASF per FTE
Gymnasium	5 ASF per FTE less DL*
Campus Support Services	4 ASF per FTE

* DL – Distance Learning FTE (SUS standards)

TABLE 9**Generated Net Assignable Square Feet by Space Category for Main Campus**

Based on 2022-2023 projected US FTE of 41,620 (less 7,334 US FTE for Distance Learning where applicable)*

SPACE CATEGORY	ASF Generated
Classroom	321,776
Teaching Laboratory	402,219
Study	561,870
Research Laboratory	780,375
Office	936,450
Auditorium/Exhibition	80,444
Instructional Media	124,860
Gymnasium	160,888
Campus Support Services	168,561
Total	3,537,443

*Distance Learning applicable to Classroom, Teaching Lab, Auditorium/Exhibition, and Gymnasium space categories.

TABLE 10**Comparison of Existing Satisfactory Space with Generated Square Footage Needs by Category**

SPACE CATEGORY	FY 2022-2023 ASF Generated Need	FY 2017-2018 ASF Existing Satisfactory Space	Projected ASF Unmet Need	Adjusted * ASF Unmet Need	Percentage of Need	
					Met	Unmet
Classroom	321,776	319,557	2,219	5,023	99.31%	0.69%
Teaching Laboratory	402,219	442,950	(40,731)	(20,292)	110.13%	-10.13%
Study	561,870	340,064	221,806	218,965	60.52%	39.48%
Research Laboratory	780,375	581,918	198,457	149,882	74.57%	25.43%
Office	936,450	1,343,441	(406,991)	(378,818)	143.46%	-43.46%
Auditorium / Exhibition	80,444	128,207	(47,763)	(47,763)	159.37%	-59.37%
Instructional Media	124,860	1,299	123,561	123,561	1.04%	98.96%
Gymnasium	160,888	40,133	120,755	120,755	24.94%	75.06%
Campus Support Services	168,561	131,013	37,548	37,548	77.72%	22.28%
Total	3,537,443	3,328,582	208,861	208,861	94.10%	5.90%

* Adjusted for reclassification of existing space repurposed when projects under construction are complete.

ANALYSIS OF SPACE NEEDS BY CATEGORY - FORM B REVISED

FLORIDA STATE UNIVERSITY

Main Campus

Does not include Ringling, Panama City Sites and Medical Sites

Net Assignable Square Feet Eligible for Fixed Capital Outlay Budgeting

Traditional FTE= 34,286
 On-Line FTE= 7,334
 TOTAL FTE= 41,620

TABLE 11
Analysis of Space Needs by Space Category for Main Campus

	Class- room**	Teaching Lab**	Study	Research Lab	Office	Audi/ Exhib.**	Instruct. Media	Gym**	Campus Support Services	Total NASF
Space Needs by Space Type*:	2022-2023									
	321,776	402,219	561,870	780,375	936,450	80,444	124,860	160,888	168,561	3,537,443
1) Current Inventory as of:	October 5, 2017									
	324,328	432,158	342,754	653,651	1,328,789	124,808	19,166	44,440	151,154	3,421,248
Less										
Unsatisfactory Space to be Terminated	4,048	0	3,000	0	4,342	1,673	0	4,307	18,339	35,709
Unsatisfactory Space to be Demolished	742	5,768	620	0	3,416	0	0	0	518	11,064
Ineligible Space	9,261	1,296	2,226	99,403	32,154	454	17,867	0	1,514	163,975
Plus										
Total Under Construction	9,280	17,856	3,156	27,670	40,160	5,526	0	0	0	103,648
African-American Study/BSU	0	0	76	0	1198	2139	0	0	0	3,413
Jim Moran Building	0	2606	740	0	3962	3387	0	0	0	10,695
EOAS	9280	15250	2340	27670	35000	0	0	0	0	89,540
Beginning Inventory for Form B Purposes	319,357	442,950	340,064	581,918	1,329,037	128,207	1,299	40,133	130,983	3,314,148
Net Space Needs	2,219	(40,731)	221,806	198,457	(392,587)	(47,763)	123,561	120,755	37,578	223,295
*SUS 9-categories of Space										
(**Online FTE excluded from Classroom, Teaching Lab, Auditorium/Exhibition, and Gymnasium needs.)										
1) Unsatisfactory Space with No Requested Action	-	-	-	-	-	-	-	-	-	-
2) Unsatisfactory Space to be Renovated/Remodeled	2,824	8,694	1,412	105,417	55,285	-	-	-	123	173,755
Space Changes Due to Construction (Eligible Spaces)	(2,804)	(20,439)	2,841	48,575	(28,173)	0	0	0	0	0
EOAS	0	(1,035)	1,035	10,000	(10,000)	0	0	0	0	0
0113 Caraway Building	(1,998)	(1,604)	1,000	10,764	(8,162)	0	0	0	0	0
0116 Love Building	(806)	(3,405)	806	13,416	(10,011)	0	0	0	0	0
Preeminent Funding	0	(14,395)	0	14,395	0	0	0	0	0	0
Adjusted Net Space Needs	5,023	(20,292)	218,965	149,882	(364,414)	(47,763)	123,561	120,755	37,578	223,295

X RECOMMENDATIONS OF SURVEY TEAM

The recommendations of the Survey Team, including site improvements and standard university-wide recommendations, were given to the University President following the exit interview on October 26, 2017. Subsequent to this, the recommendations were amended and a letter explaining the University's understanding of the final recommendations was sent to Chancellor at the Florida Board of Governors. The final recommendations of the Survey Team have been expanded and are provided below. Following the text is Table 12, which shows the impact of the recommendations on the facilities inventory for Main Campus.

Site Improvements Recommendations:

- 1.1 Land Acquisition – This project allows the university to continue purchasing properties surrounding all campuses as identified in the adopted Campus Master Plan.
- 1.2 Landscaping and Site Improvements – This is a general recommendation for landscaping and site improvements consistent with the adopted Campus Master Plan.
- 1.3 Utility Infrastructure – This is a general recommendation for items in the categories of chilled water, controls, electrical distributions, storm sewer, sanitary sewer, telecommunications, energy management control systems, irrigation, water distribution, steam equipment and distribution and roads. These projects consist of improvements, extensions, modifications, and additions to the major utility systems consistent with the adopted Campus Master Plan.

Remodeling/Renovation Recommendations:

- 2.1 Remodeling/renovation recommendations are in accordance with the net square footage as described in the Form B. Remodeling/renovation recommendations that yield no significant changes to existing space use categories are recommended.
- 2.2 The significant remodeling/renovation projects must be specifically identified. The projects must identify the space categories affected (i.e. from existing space use to proposed space use). Any changes to remodeling/renovation projects that exceed 100% of any space use categories will require a supplemental survey.
 - 2.2a Winchester Building Remodel
 - From 14,404 NSF office, 30 NSF campus support service
 - To 10,000 NSF office, 3,500 NSF campus support service.
 - 2.2b Library System Improvements Phase I (Dirac Science Library Building) Remodel
 - From 1,291 NSF classroom, 584 NSF teaching lab, 49,578 NSF study, 524 NSF research lab, 20,722 NSF office
 - To 60,000 NSF study, 18,000 NSF office.
 - 2.2c Dittmer Chemistry Lab Remodel
 - From 70,804 NSF research lab, 17,531 NSF office
 - To 1,500 NSF study, 85,000 NSF research lab, 1,000 NSF office.

2.2d Kellogg Building Remodel

- From 2,824 NSF classroom, 5,890 NSF teaching lab, 246 NSF research lab, 14,571 NSF office, 93 NSF campus support service
- To 2,500 NSF classroom, 5,000 NSF teaching lab, 2,500 NSF study, 13,000 NSF office.

2.2e Biology Unit I Building Remodel

- From 2,804 NSF teaching lab, 1,412 NSF study, 34,367 NSF research lab, 8,779 NSF office
- To 3,000 NSF study, 38,000 NSF research lab, 6,000 NSF office.

New Construction Recommendations:

New construction recommendations are in accordance with the presented net square footage and as described in the Form B. The following projects are recommended:

3.1 Academic Support Building

63,000 NSF (20,000 office, 43,000 campus support service)

Projects Based on Exception Procedure:

The survey team is recommending the following project based on the exception procedure. This project consists of ineligible space and therefore the Form B space needs formula does not apply.

4.1 Veteran's Legacy Complex

39,330 NSF (2,895 classroom, 1,170 teaching lab, 12,260 study, 12,455 office, 9,500 auditorium/exhibition, 1,050 instructional media)

Demolition Recommendations:

Pursuant to Board of Governors' Regulation 9.004, Razing of Buildings, demolition projects beneath the \$1,000,000 threshold do not require an Educational Plant Survey recommendation; however, all reductions in space categories should be appropriately reflected in the Form B.

The following demolitions have been requested and are recommended:

5.1 ROTC Building – 3,124 NSF classroom, 1,565 NSF study, 6,269 NSF office

5.2 Employee Assistance Building – 1,434 NSF office

5.3 Seminole Dining Building – 2,131 NSF office

5.4 Mendenhall A – 17,972 NSF office, 34,048 NSF campus support service

5.5 Mendenhall B – 1,300 NSF office

5.6 Mendenhall Annex – 359 NSF office

5.7 FDLE Mail Scan Building – 605 NSF office, 9,697 NSF campus support service

Continuing Survey Recommendations:

These project(s) were survey recommended and partially funded through legislative appropriations during the previous survey cycle, however their funding has not yet been completed. This is a recommendation for continued funding for these projects.

- 6.1 Earth, Ocean, and Atmospheric Sciences Building (EOAS)
89,540 NSF (9,280 classroom, 15,250 teaching lab, 2,340 study, 27,670 research lab, 35,000 office)

Projects Funded for Planning:

These projects were not previously survey recommended. However, they were partially funded through legislative appropriations. This is a survey recommendation to continue funding for these projects.

- 7.1 College of Business
131,585 NSF (36,090 classroom, 10,615 teaching lab, 6,205 study, 2,250 research lab, 60,125 office, 15,000 auditorium/exhibition, 1,000 instructional media, 300 campus support service)
- 7.2 STEM Teaching Lab Building
48,500 NSF (44,000 teaching lab, 2,500 study, 2,000 office)
- 7.3 Interdisciplinary Research and Commercialization Building (IRCB)
68,302 NSF (45,007 research lab, 20,280 office, 3,015 campus support service)

Special Purpose Center Recommendations:

- 8.1 N/A

Standard University-wide Recommendations:

SR1. Projects for safety corrections are recommended.

SR2. Projects for corrections or modifications necessary to comply with the Americans Disabilities Act are recommended.

SR3. Projects required to repair or replace a building's components are recommended provided that the total cost of the project does not exceed 25% of the replacement cost of the building.

SR4. Expansion, replacement and upgrading of existing utilities/infrastructure systems to support projects identified within this Educational Plant Survey are recommended.

Notes:

- A. University is to write recommendation text in accordance with current Educational Plant Survey format criteria.

- B. The Survey Team requires that projects recommended for approval are to be incorporated into the Master Plan update(s).
- C. The Survey Team recommendations to the Board of Governors cannot exceed 100% of space needs met by formula in any of the nine (9) space categories. Any project that exceeds 100% of needs met must be modified to ensure approval by the Survey Team. The 100% threshold options are as follows:
 - 1. Verify space use classification (i.e. Classroom, Teaching Lab, etc.)
 - 2. Reduce square footage in space use categories exceeding 100%
 - 3. Delete a project or the space in a use category that exceeds 100%
 - 4. Substitute with other proposed space categories within the same project.
 - 5. Shift requested project priorities to stay below 100% threshold.
 - 6. Provide a university strategy to support temporary overages.
- D. Supplemental surveys are required if any changes to project scope result in a space category exceeding 100% of formula-driven need.

TABLE 12

Analysis of Facilities Inventory Impact of Survey Recommended Projects for Main Campus

FLORIDA STATE UNIVERSITY 2022-2023												
Space Needs by Space Type	2022-2023											
Net Space Needs from Form B		Class- room	Teaching Lab	Study	Research Lab	Office	Exhibition	Media	Gym	Support Services	Total NASF	
Percent of Space Needs												
3) Projects Funded for Planning												
Project 1)												
College of Business		36,090	10,615	6,205	2,250	60,125	15,000	1,000	0	300	131,585	
Sub Total Net Space Needs		(31,067)	(30,907)	212,760	147,632	(424,339)	(62,763)	122,561	120,735	37,278	91,710	
Sub Total Percent		110.53%	112.77%	61.63%	74.86%	148.34%	178.02%	1.84%	24.94%	77.88%	97.41%	
Project 2)												
STEM Teaching Lab		0	44,000	2,500	0	2,000	0	0	0	0	48,500	
Sub Total Net Space Needs		(31,067)	(74,907)	210,260	147,632	(426,339)	(62,763)	122,561	120,735	37,278	43,210	
Sub Total Percent		110.53%	123.70%	62.07%	74.86%	148.56%	178.02%	1.84%	24.94%	77.88%	98.78%	
Project 3)												
IRCB		0	0	0	45,007	20,280	0	0	0	0	65,302	
Sub Total Net Space Needs		(31,067)	(74,907)	210,260	102,625	(446,319)	(62,763)	122,561	120,735	34,263	(25,092)	
Sub Total Percent		110.53%	123.70%	62.07%	80.62%	150.72%	178.02%	1.84%	24.94%	79.67%	100.71%	
4) New Construction Projects												
Project 1)												
Utility/Infrastructure/Capital Renewal/Roofs		0	0	0	0	0	0	0	0	0	0	
Sub Total Net Space Needs		(31,067)	(74,907)	210,260	102,625	(446,319)	(62,763)	122,561	120,735	34,263	(25,092)	
Sub Total Percent		110.53%	123.70%	62.07%	80.62%	150.72%	178.02%	1.84%	24.94%	79.67%	100.71%	
Project 2)												
Land Acquisition		0	0	0	0	0	0	0	0	0	0	
Sub Total Net Space Needs		(31,067)	(74,907)	210,260	102,625	(446,319)	(62,763)	122,561	120,735	34,263	(25,092)	
Sub Total Percent		110.53%	123.70%	62.07%	80.62%	150.72%	178.02%	1.84%	24.94%	79.67%	100.71%	
Project 3)												
Veterans Legacy Complex		2,895	1,170	12,260	0	12,435	9,500	1,050	0	0	39,330	
Space to be demolished ³ : Building 0121 - ROTC		0	0	0	0	0	0	0	0	0	0	
Building 0437 - Employees Asst.		0	0	0	0	(1,434)	0	0	0	0	(1,434)	
Building 0445 - Seminoles Dining		0	0	0	0	0	0	0	0	0	0	
Sub Total Net Space Needs		(33,962)	(76,077)	198,000	102,625	(457,840)	(72,263)	121,511	120,735	34,263	(62,988)	
Sub Total Percent		111.43%	124.00%	64.25%	80.62%	152.05%	189.83%	2.68%	24.94%	79.67%	101.82%	
Project 4)												
Academic Support Building		0	0	0	0	20,000	0	0	0	43,000	63,000	
Space to be demolished ³ : Building 0077 - Mendenhall A		0	0	0	0	(17,972)	0	0	0	(34,048)	(34,048)	
Building 0078 - Mendenhall B		0	0	0	0	(1,300)	0	0	0	1,300	0	
Building 0431 - Mendenhall Annex		0	0	0	0	(359)	0	0	0	0	(359)	
Building 0467 - FDLE Mail Scan		0	0	0	0	0	0	0	0	0	0	
Sub Total Net Space Needs		(33,962)	(76,077)	198,000	102,625	(458,209)	(72,263)	121,511	120,735	24,011	(73,609)	
Sub Total Percent		111.43%	124.00%	64.25%	80.62%	154.19%	189.83%	2.68%	24.94%	105.18%	103.60%	
Project 5)												
Physics Building		10,000	20,000	3,500	20,000	25,000	0	0	0	0	78,500	
Sub Total Net Space Needs		(43,962)	(96,077)	194,500	82,625	(483,209)	(72,263)	121,511	120,735	24,011	(152,109)	
Sub Total Percent		114.53%	128.97%	64.88%	83.19%	156.86%	189.83%	2.68%	24.94%	105.18%	105.82%	
5) Remodeling Projects ⁴												
Project 1)												
Winchester Building		0	0	0	0	14,404	0	0	0	30	14,434	
Prior to Remodel:		0	0	0	0	(4,404)	0	0	0	3,470	(934)	
Proposed Changes:		0	0	0	0	0	0	0	0	0	0	
After Remodel:		0	0	0	0	10,000	0	0	0	3,500	13,500	
Unsatifactory Remodeled:		0	0	0	0	14,404	0	0	0	30	14,434	
Sub Total Net Space Needs		(43,962)	(96,077)	194,500	82,625	(478,303)	(72,263)	121,511	120,735	20,541	(151,179)	
Sub Total Percent		114.53%	128.97%	64.88%	83.19%	156.39%	189.83%	2.68%	24.94%	107.24%	105.79%	
Sub Total Unsatisfactory		2,824	8,694	1,412	105,417	40,881	0	0	0	93	159,321	

TABLE 12 (Continued)

Analysis of Facilities Inventory Impact of Survey Recommended Projects for Main Campus

		Class- room	Teaching Lab	Study Lab	Research Lab	Office Exhibition	Media Instruct.	Gym	Support Services	Total NASF
Project 2)	Library System									
	Prior to Remodel:	1,291	584	49,578	524	20,722	0	0	0	72,699
	Proposed Remodel:	(1,291)	(584)	10,422	(524)	(2,722)	0	0	0	5,301
	After Remodel:	0	0	60,000	0	18,000	0	0	0	78,000
	Unsatisfactory Remodeled:	0	0	0	0	0	0	0	0	0
	Sub Total Net Space Needs	(42,671)	(95,493)	184,078	83,149	(476,083)	(72,263)	121,511	20,541	(156,476)
	Sub Total Percent	114.13%	128.82%	66.73%	83.12%	156.10%	189.83%	2.68%	24.94%	105.94%
	Sub Total Unsatisfactory	2,824	8,694	1,412	105,417	40,881	0	0	93	159,321
Proj. 3)	Dittmer Chemistry Lab									
	Prior to Remodel:	0	0	0	70,804	17,531	0	0	0	88,335
	Proposed Remodel:	0	0	1,500	14,196	(16,531)	0	0	0	(835)
	After Remodel:	0	0	1,500	83,000	1,000	0	0	0	87,500
	Unsatisfactory Remodeled:	0	0	0	70,804	17,531	0	0	0	88,335
	Sub Total Net Space Needs	(42,671)	(95,493)	182,578	68,953	(459,552)	(72,263)	121,511	20,541	(243,976)
	Sub Total Percent	114.13%	128.82%	67.00%	94.01%	156.20%	189.83%	2.68%	24.94%	108.42%
	Sub Total Unsatisfactory	2,824	8,694	1,412	34,613	23,350	0	0	93	70,986
Proj. 4)	Kellogg Building									
	Prior to Remodel:	2,824	5,890	0	246	14,571	0	0	0	23,624
	Proposed Remodel:	(924)	(890)	2,500	(246)	(1,571)	0	0	0	(624)
	After Remodel:	2,500	5,000	2,500	0	13,000	0	0	0	23,000
	Unsatisfactory Remodeled:	2,824	5,890	0	246	14,571	0	0	0	23,624
	Sub Total Net Space Needs	(45,171)	(100,493)	180,078	68,953	(472,552)	(72,263)	121,511	20,541	(266,976)
	Sub Total Percent	114.91%	130.07%	67.44%	94.01%	157.59%	189.83%	2.68%	24.94%	109.07%
	Sub Total Unsatisfactory	0	2,804	1,412	34,367	8,779	0	0	0	47,362
Proj. 5)	Biology Unit I Building									
	Prior to Remodel:	0	2,804	1,412	34,367	8,779	0	0	0	47,362
	Proposed Remodel:	0	(2,804)	1,588	3,633	(2,779)	0	0	0	(962)
	After Remodel:	0	0	3,000	38,000	6,000	0	0	0	47,000
	Unsatisfactory Remodeled:	0	2,804	1,412	34,367	8,779	0	0	0	47,362
	Sub Total Net Space Needs	(45,171)	(100,493)	177,078	30,953	(478,552)	(72,263)	121,511	20,541	(313,976)
	Sub Total Percent	114.91%	130.07%	67.98%	98.88%	158.23%	189.83%	2.68%	24.94%	110.40%
	Sub Total Unsatisfactory	0	0	0	0	0	0	0	0	0
6) Renovation Projects ²										
None to be presented										
Total Net Space Needs 2022-2023										
Total Percent of Net Space Needs										
Total Unsatisfactory Space										
¹ Assumes that no substantial amount of satisfactory space is being repurposed, and that the repurposed space is currently unsatisfactory, as defined by the university. ² Assumes that renovations address unsatisfactory space, as defined by the university.										
³ Space in to be terminated, to be demolished, or ineligible should not be included as this space has already been accounted for in the net space needs.										
Definitions:										
Remodeling	f.s. 1013.01(17) - the changing of existing facilities by rearrangement of spaces and their use and includes, but is not limited to, the conversion of two classrooms to a science laboratory or the conversion of a closed plan arrangement to an open plan configuration.									
Renovation	f.s. 1013.01(18) - the rejuvenating or upgrading of existing facilities by installation or replacement of materials and equipment and includes, but is not limited to, interior or exterior reconditioning of facilities and spaces; air conditioning, heating, or ventilating equipment; fire alarm systems; emergency lighting; electrical systems; and complete roofing or roof replacement, including replacement of membrane or structure.									
Termination	to take space completely out of all space use categories.									
Demolition	to completely raze a facility.									
Total Space Inventory	sum of all eligible satisfactory and unsatisfactory E&G space.									

XI Funding of Capital Projects

The projects recommended by the Survey Team may be funded based on the availability of funds authorized for such purposes. The primary source available to the University is Public Education Capital Outlay (PECO). PECO funds are provided pursuant to Section 11(f), Article VII of the State Constitution, as amended. These funds are appropriated to the State University System pursuant to Section 1013.60, Florida Statutes, which provides that a list of projects is submitted by the University's Board of Trustees to the Board of Governors for inclusion within the Chancellor's Fixed Capital Outlay Legislative Budget Request. In addition, a lump sum appropriation is provided for remodeling, renovation, maintenance, repairs, and site improvements for existing satisfactory facilities. This lump sum appropriation is then allocated by the Board of Governors to the universities. The projects funded from PECO are normally for instructional, academic or institutional support purposes.

Another source for capital projects is Capital Improvement Fees (Section 1009.24(8) F.S.). University students pay Building Fees and Capital Improvement Fees per credit hour per semester. This revenue source is commonly referred to as Capital Improvement Fees and is used to finance university capital projects or debt service on bonds issued by the State University System. The projects financed from this revenue source are primarily student-related, meaning that the projects provide facilities such as student unions, outdoor recreation facilities, and athletic facilities. Periodically, a funding plan is developed for available and projected revenues. Universities receive an allocation and develop a list of projects that are submitted by the Board of Trustees to the Chancellor of the Board of Governors for inclusion within a request to the Legislature for appropriation authority.

The Facilities Enhancement Challenge Grant Program, also known as the "Courtelis Program", established pursuant to Section 1013.79, Florida Statutes, provided for the state matching of private donations for facilities projects that support instruction or research. Under this program, each private donation for a project is matched by state funds.

Section 1004.22(8), Florida Statutes, provides authority to accomplish capital projects from grants, and private gifts. In addition, authority is provided within this section to finance facilities to support auxiliary enterprises from the issuance of bonds supported by university auxiliary revenues. Legislative approval of the proposed projects is required.

A limited amount of general revenue funds has been appropriated for university capital projects. Table 13 identifies the specific project appropriations made available to the Florida State University since the previous Survey.

TABLE 13

Fixed Capital Outlay and Appropriations for Fiscal Years 2012-2013 to 2017-2018

Fiscal Year	Project Name	Appropriated Funds				Total
		PECO	Courtellis Trust Fund	Lottery Funds	General Revenue	
2012-2013	Maintenance, Repairs, Renovations, and Remodeling Earth Ocean Atomospheric Sciences Building (EOAS)	\$ 7,000,000				\$ 7,000,000
				\$ 3,850,000		\$ 3,850,000
	SUBTOTAL	\$ 7,000,000	\$ -	\$ 3,850,000	\$ -	\$ 10,850,000
2013-2014	(No funds received)					\$ -
	SUBTOTAL	\$ -	\$ -	\$ -	\$ -	\$ -
	FAMU-FSU College of Engineering III - Joint Use* Earth Ocean Atomospheric Sciences Building (EOAS)	\$ 10,000,000				\$ 10,000,000
		\$ 20,000,000				\$ 20,000,000
	SUBTOTAL	\$ 30,000,000	\$ -	\$ -	\$ -	\$ 30,000,000
2015-2016	Maintenance, Repairs, Renovations, and Remodeling Earth Ocean Atomospheric Sciences Building (EOAS)	\$ 4,902,384				\$ 4,902,384
		\$ 5,000,000				\$ 5,000,000
	SUBTOTAL	\$ 9,902,384	\$ -	\$ -	\$ -	\$ 9,902,384
2016-2017	Maintenance, Repairs, Renovations, and Remodeling Earth Ocean Atomospheric Sciences Building (EOAS)	\$ 8,825,475				\$ 8,825,475
		\$ 12,000,000				\$ 12,000,000
	Black Student Union	\$ 1,500,000				\$ 1,500,000
	SUBTOTAL	\$ 22,325,475	\$ -	\$ -	\$ -	\$ 22,325,475
2017-2018	Maintenance, Repairs, Renovations, and Remodeling Earth Ocean Atomospheric Sciences Building (EOAS)	\$ 6,500,000				\$ 6,500,000
		\$ 16,040,737				\$ 16,040,737
	College of Business Building	\$ 5,000,000				\$ 5,000,000
	Interdisciplinary Research Commercialization Building (IRCB)	\$ 6,774,101				\$ 6,774,101
	STEM Teaching Lab	\$ 4,233,813				\$ 4,233,813
	SUBTOTAL	\$ 38,548,651	\$ -	\$ -	\$ -	\$ 38,548,651
	GRAND TOTAL	\$ 69,227,859	\$ -	\$ 3,850,000	\$ -	\$ 73,077,859

* FAMU to serve as Fiscal Agent

APPENDICES

Documents referenced in this Survey can be found at the following websites:

A. Board of Governors Survey Process

<http://www.flbog.edu/about/cod/finfacoffice.php>

B. Space Needs Generation Formula

https://www.facilities.fsu.edu/Planning_Space_Management/SUS_Space_Admin.php

C. Building Assessments

There were no building assessments required during this survey.

D. Florida State University's Campus Master Plan

https://www.facilities.fsu.edu/Planning_Space_Management/master_plan.php

E. Florida State University's Strategic Plan

<http://strategicplan.fsu.edu/>

SITE MAPS

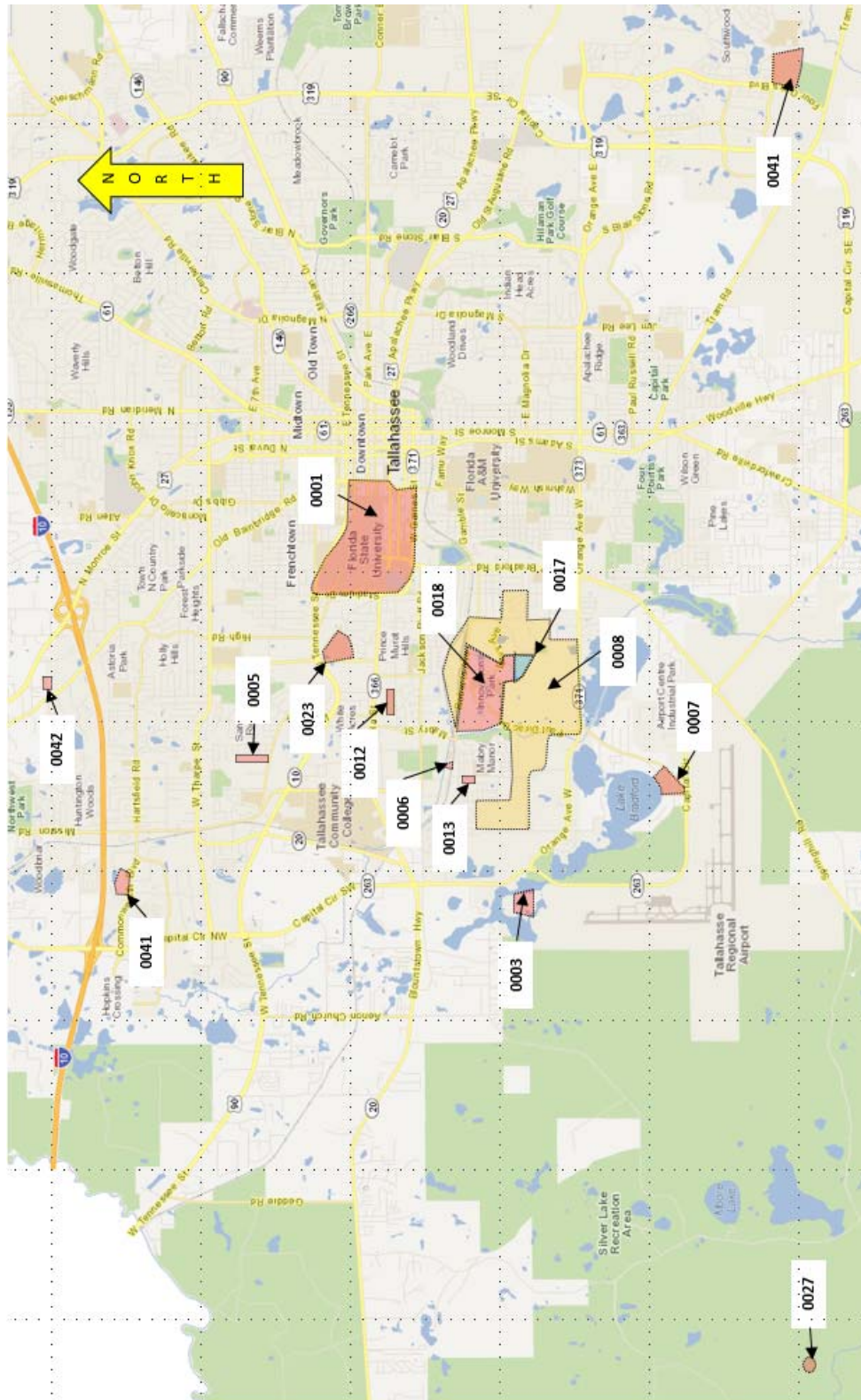
Sites are used to distinguish the particular details of the functions, use, or ownership of locations of properties. Only those Sites which are owned by the University or Sites that are not owned by contain buildings that are owned by the University are included in the Survey.

State of Florida



The map above shows the locations of FSU owned sites in the State of Florida. Main Campus consists of several sites in Tallahassee plus the sites located in Midway, Panacea and St. Teresa.

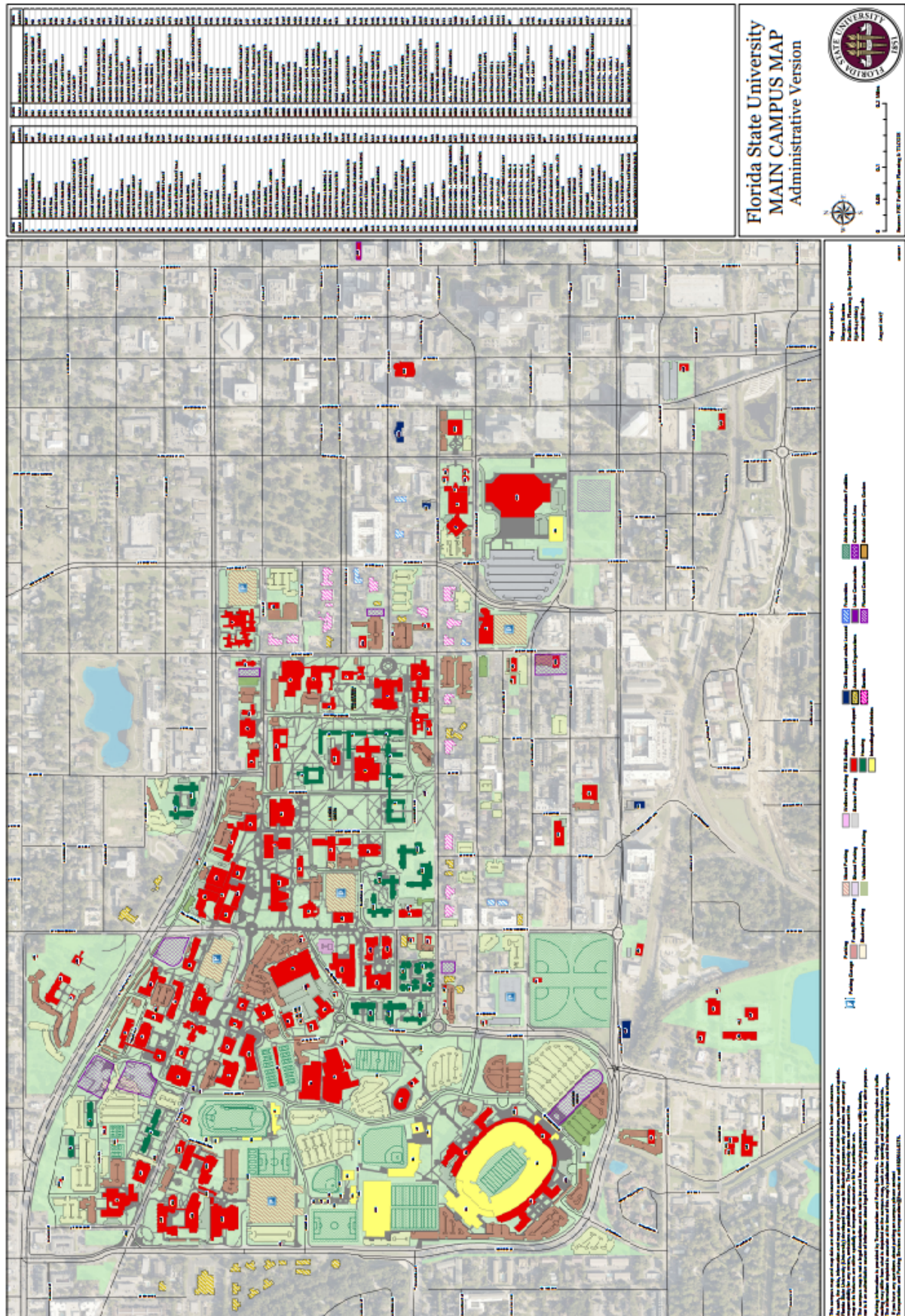
TALLAHASSEE AREA SITE LOCATIONS



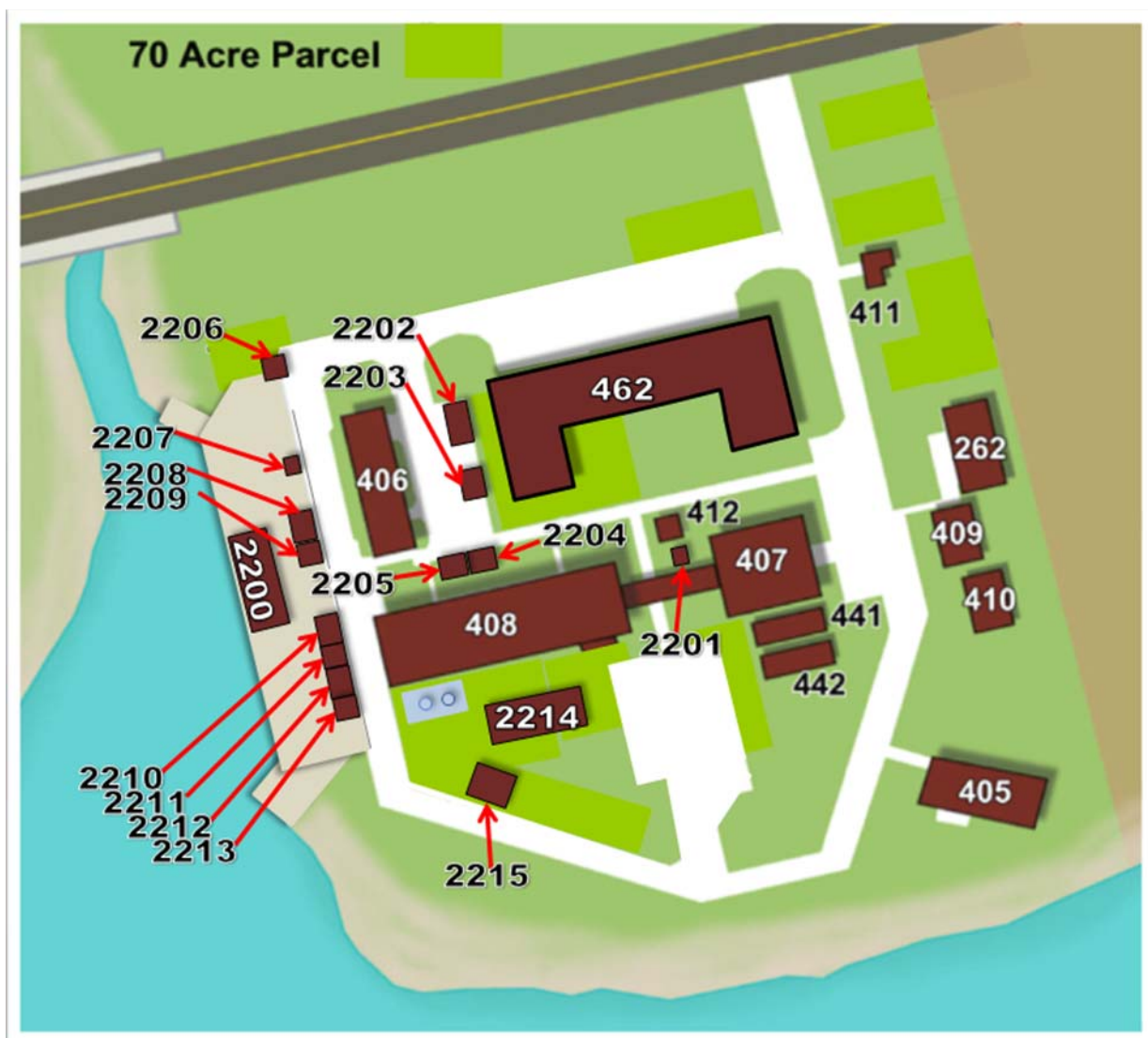
For purposes of the Survey, Main Campus is a combination of separate Sites in the Tallahassee area and those Sites in Midway, St. Teresa and Panacea. This map shows the Sites in the Tallahassee area, indicated by the Site Number, that are part of Main Campus.

The maps on the following pages are more detailed maps for those properties which are owned/leased by Florida State University.

SITE 0001 – MAIN CAMPUS

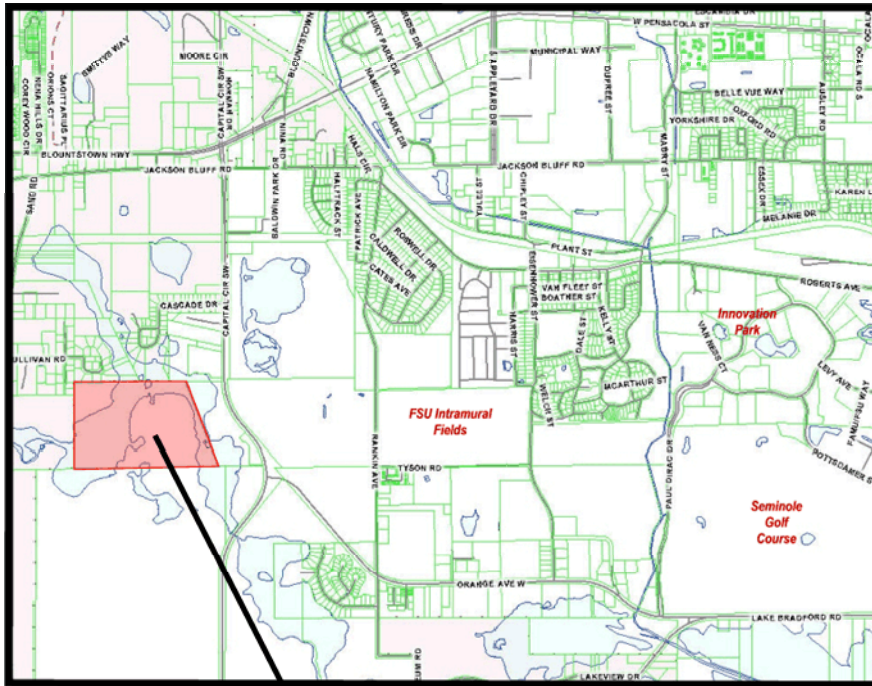


SITE 0002 – BALL MARINE LAB

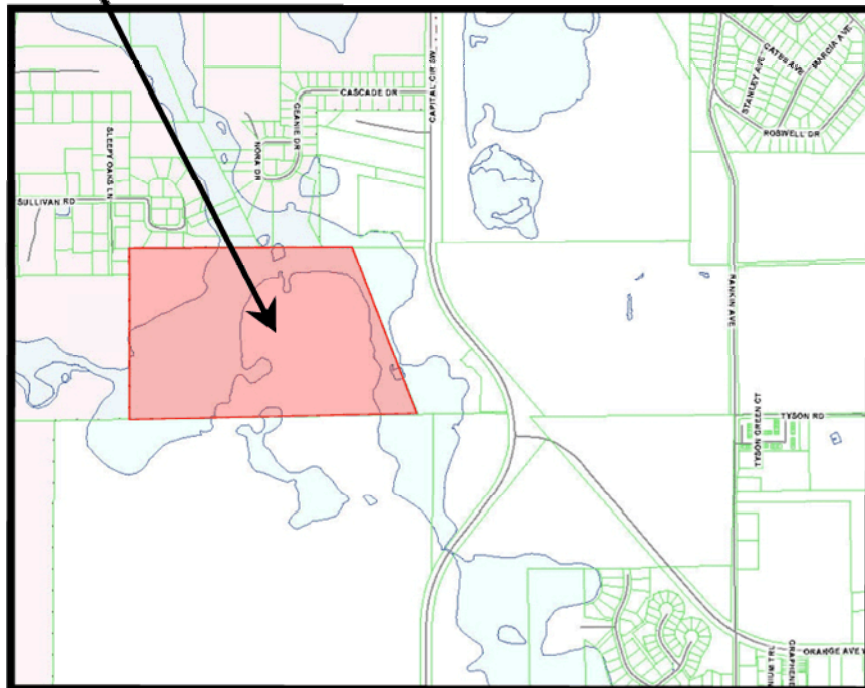


BUILDING NUMBER	BUILDING NAME	BUILDING NUMBER	BUILDING NAME
0262	Grad Student/Gift Shop/Housekeeping	2202	Carpenter Shop
0405	Guest House	2203	Flammable Storage
0406	ADP/Boating	2204	Hughes Storage
0407	Classroom/Laboratory Facility	2205	Thistle Storage
0408	Main Laboratory	2206	Security
0409	North Dorm	2207	Storage - SATS Program
0410	South Dorm	2208	Dock Storage South
0411	Well House	2209	Storage – Dr. Stallings
0412	Electrical Vault	2210	Storage – Maintenance
0441	Greenhouse North	2211	Storage – RV Callinectes
0442	Greenhouse South	2212	Storage – Dr. Dean Grubbs
0462	Administration Building	2213	Storage – Seawater
2200	Fuel Pump Canopy	2214	Herrnkind Greenhouse
2201	SAT Storage	2215	Faculty Storage

SITE 0003 – CASCADE LAKES

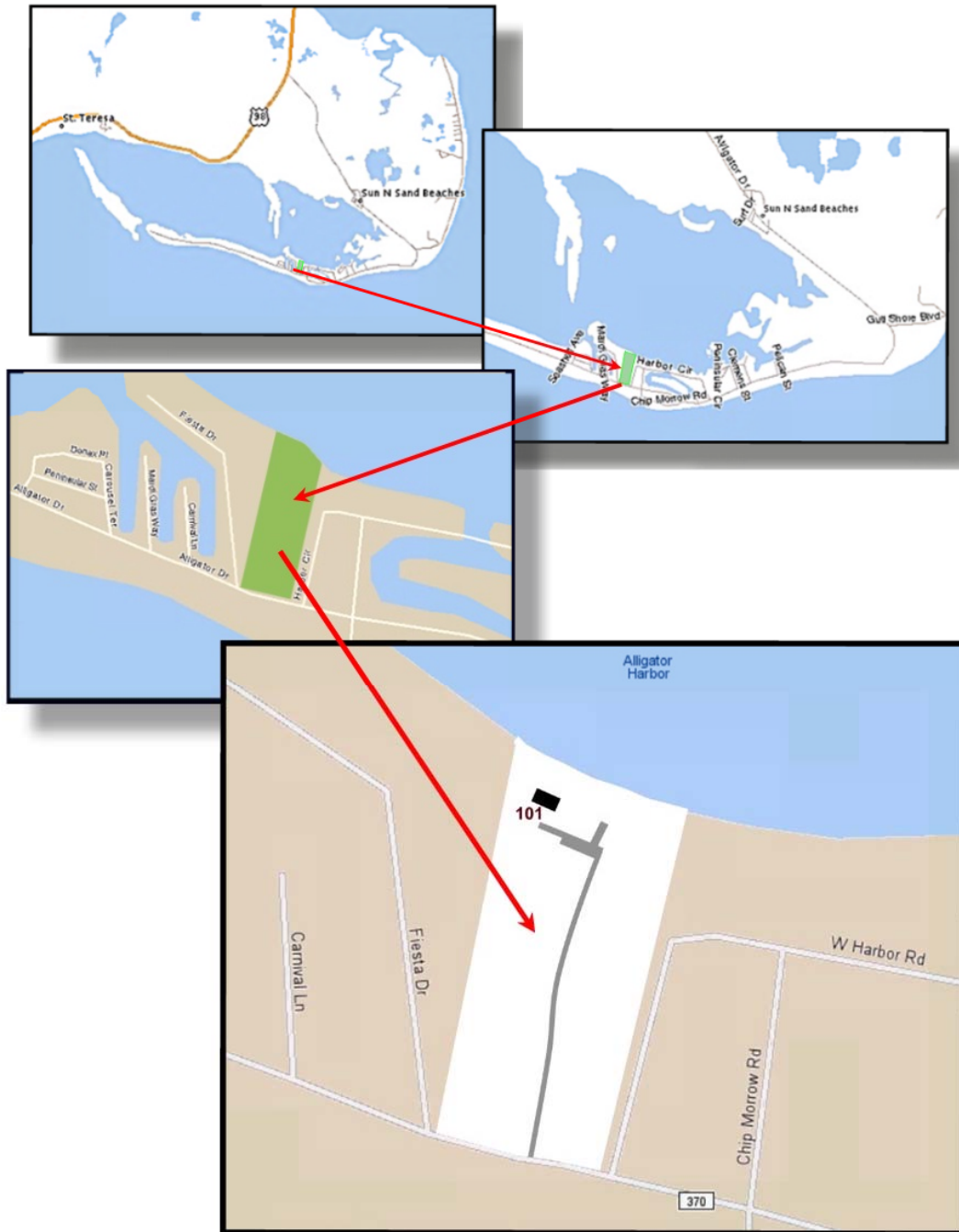


North
↑



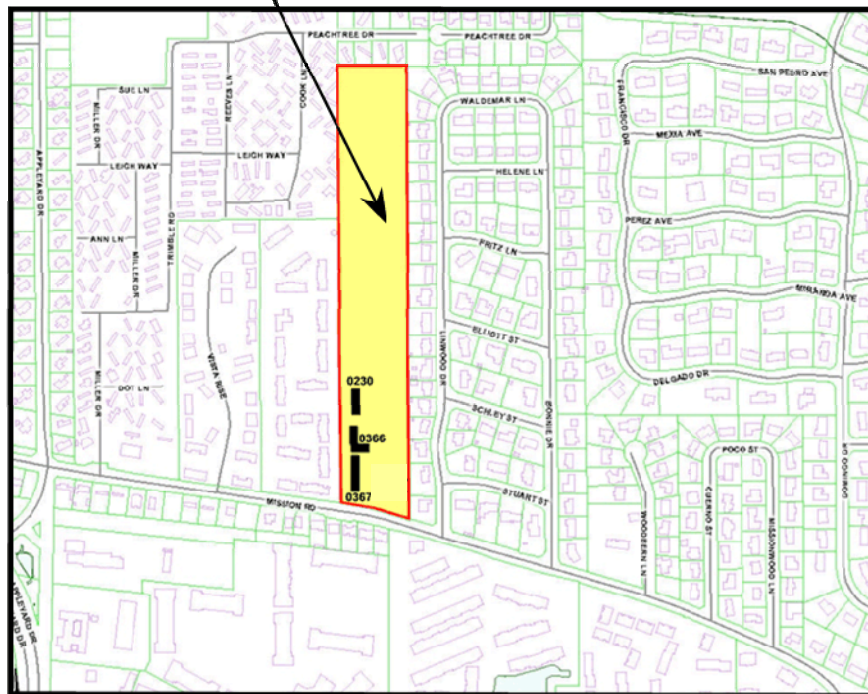
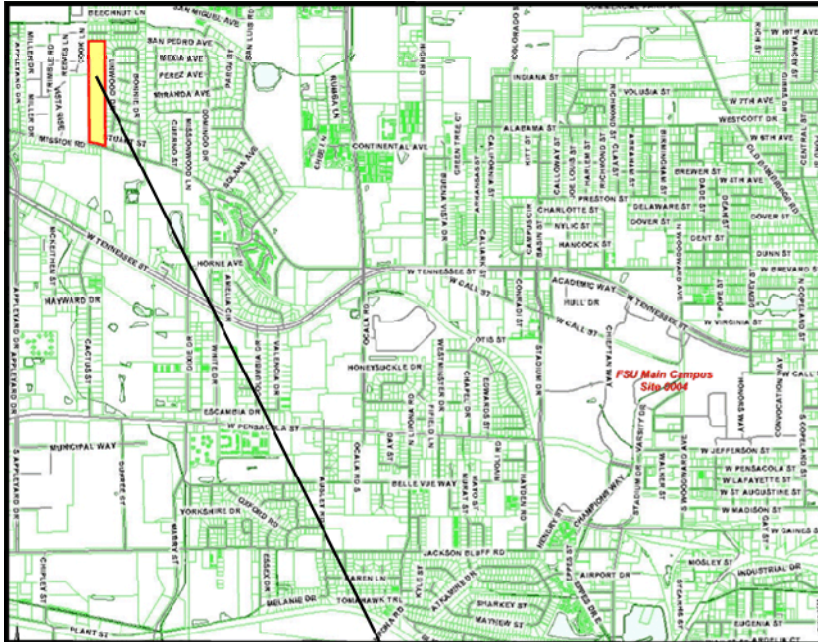
Cascade Lakes is an undeveloped parcel.

SITE 0004 – ALLIGATOR POINT



Building Number	Building Name
0101	ALLIGATOR PT. - PRES. COTTAGE

SITE 0005 – MISSION ROAD STATION



Building Number

0230

0366

0367

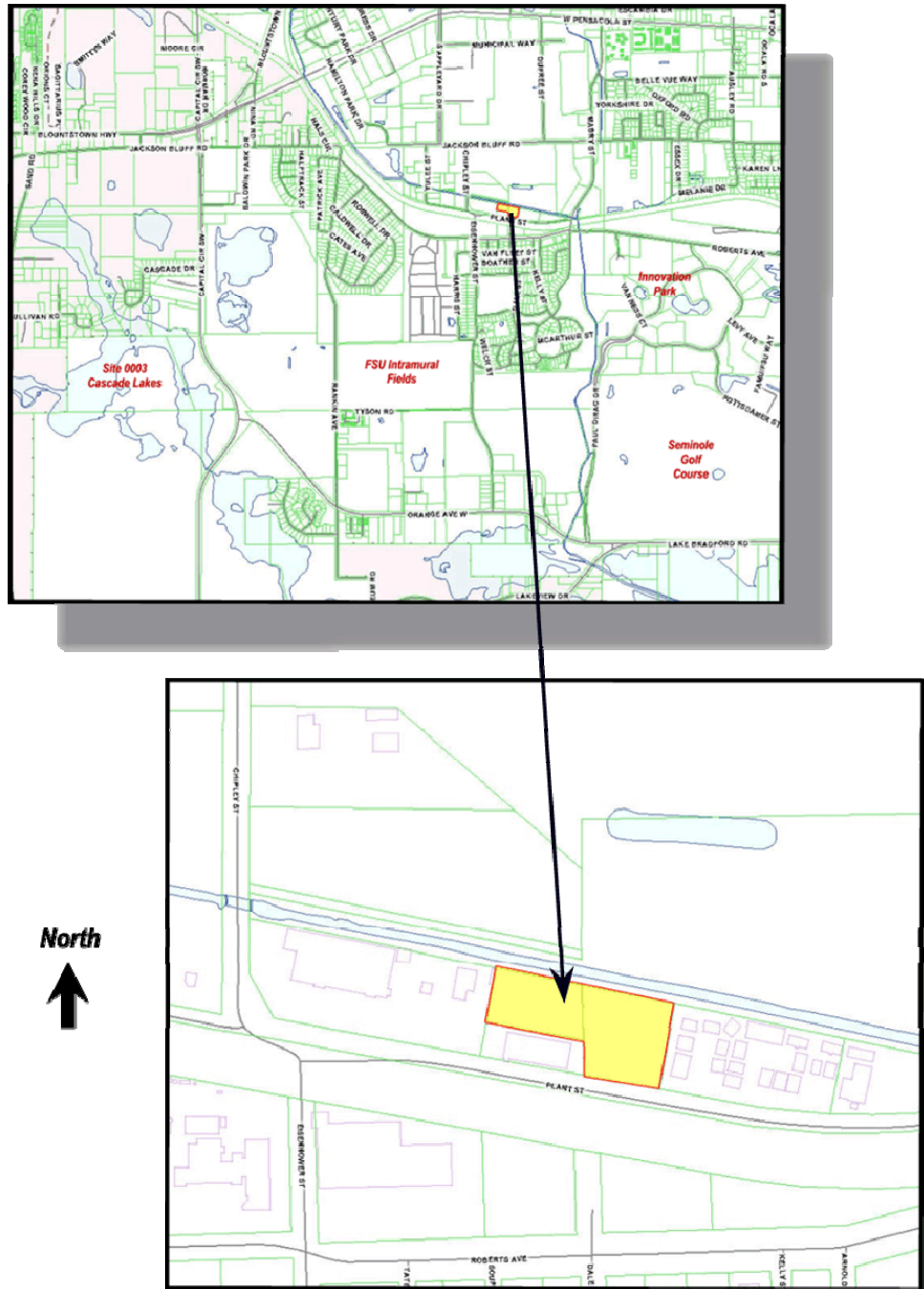
Building Name

New Greenhouse

Greenhouse

Main House (Caretaker's Residence)

SITE 0006 – PLANT STREET



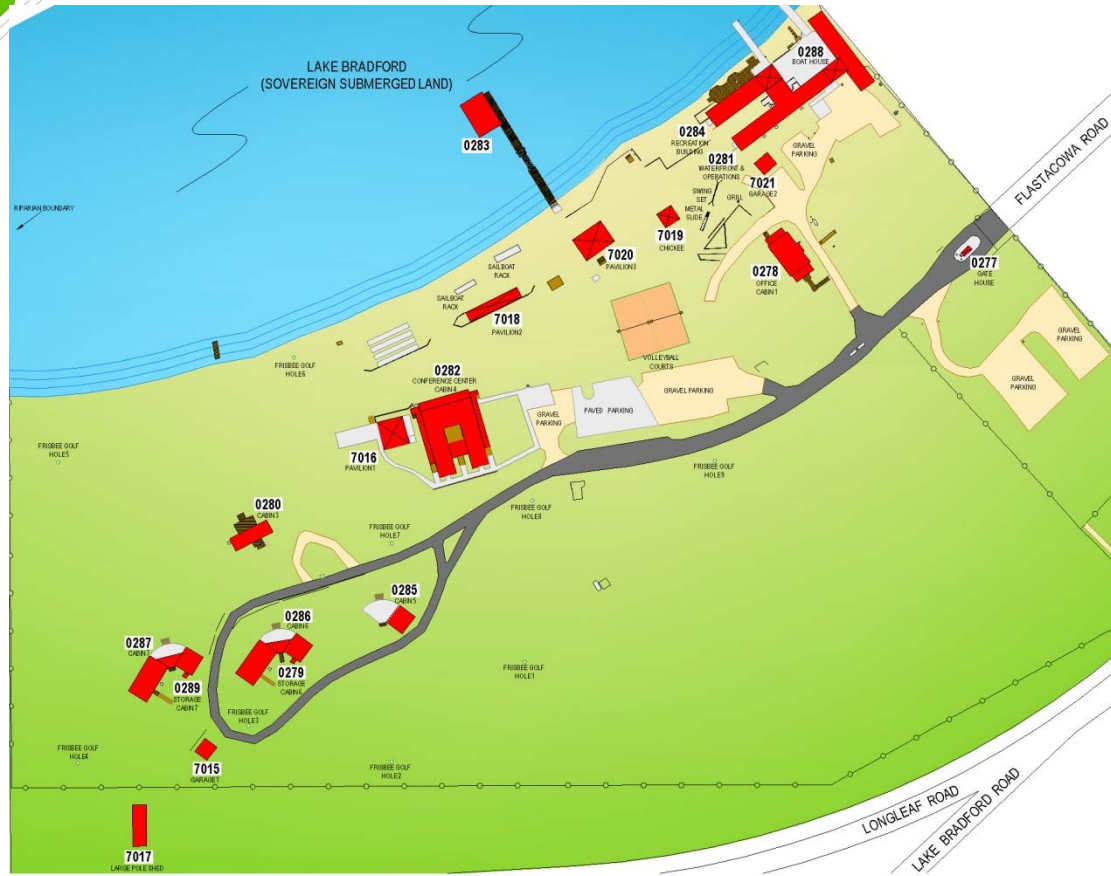
All buildings on the Plant Street site have been razed.

SITE 0007 - RESERVATION



Land Owned

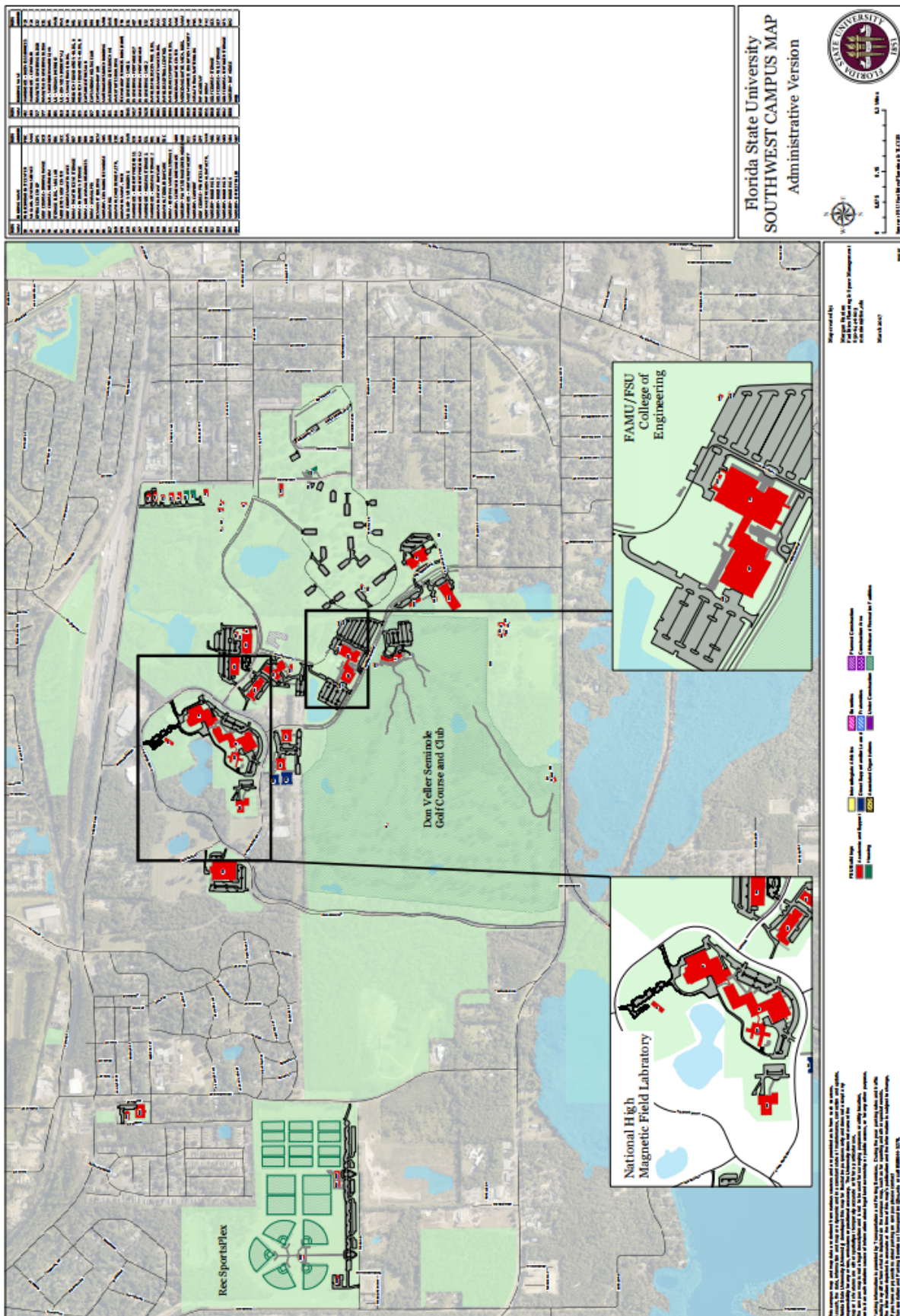
North



BUILDING NUMBER	BUILDING NAME
0277	REZ GATE HOUSE
0278	REZ ADMIN. OFFICE - CABIN 1
0279	REZ STORAGE - CABIN 6
0280	REZ STAFF RESIDENCE - CABIN 3
0281	REZ WATERFRONT & OPERATIONS
0282	REZ CONFERENCE CTR. - CABIN 4
0283	REZ DOCK COVER
0284	REZ RECREATION BUILDING
0285	REZ STAFF RESIDENCE - CABIN 5
0286	REZ DORM - CABIN 6

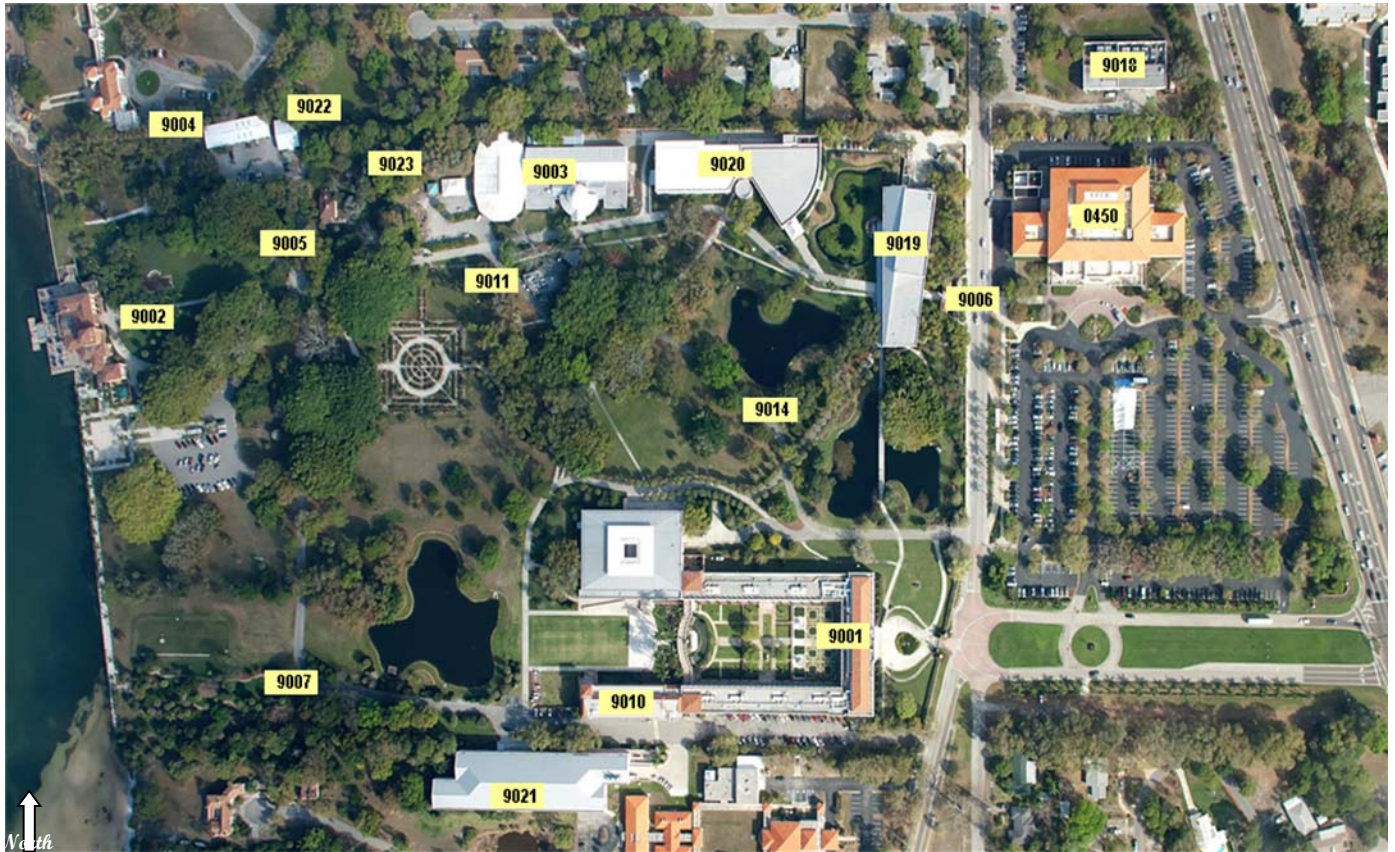
BUILDING NUMBER	BUILDING NAME
0287	REZ DORM - CABIN 7
0288	REZ BOAT HOUSE
0289	REZ STORAGE - CABIN 7
7015	REZ GARAGE 1
7016	REZ PAVILION 1
7017	REZ LARGE POLE SHED
7018	REZ PAVILION 2
7019	REZ CHICKEE
7020	REZ PAVILION 3
7021	REZ GARAGE 2

SITE 0008 – SOUTHWEST CAMPUS



For larger map go to <https://www.facilities.fsu.edu/depts/planningMan/maps.php> and select Southwest Campus Administrative Map.

SITE 0009 – RINGLING CULTURAL CENTER



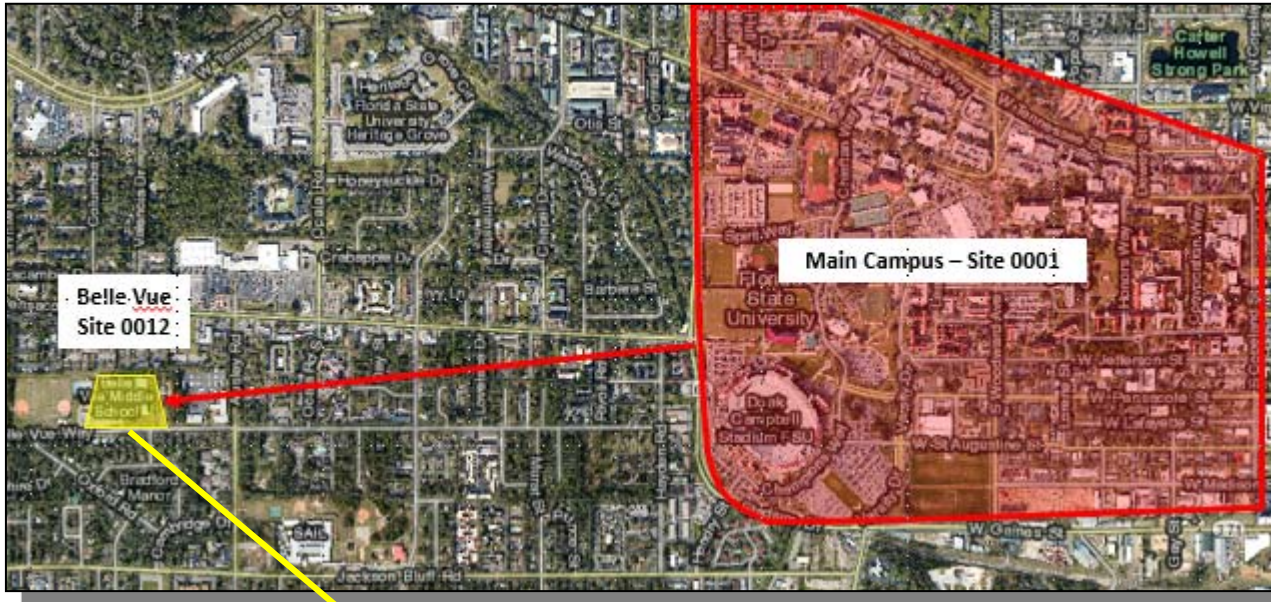
BUILDING NUMBER	BUILDING NAME
0450	CENTER FOR THE PERFORMING ARTS
9001	RINGLING- ART MUSEUM
9002	RINGLING- CA'D'ZAN
9003	RINGLING- CIRCUS MUSEUM
9004	RINGLING- GROUNDS BUILDING
9005	RINGLING- CARETAKER'S HOUSE
9006	RINGLING- NORTH GATEHOUSE
9007	RINGLING- PUMPHOUSE
9010	RINGLING- WEST WING
9011	RINGLING- BANYAN CAFE
9014	RINGLING- PUMPHOUSE #2
9018	RINGLING- UTILITIES PLANT
9019	RINGLING- VISITOR'S PAVILION
9020	RINGLING- TIBBALS LEARNING CENTER
9021	RINGLING- JOHNSON-BLALOCK CENTER
9022	RINGLING- FACILITIES ADMINISTRATION
9023	RINGLING- PUMPHOUSE #3

SITE 0010 – PANAMA CITY CAMPUS



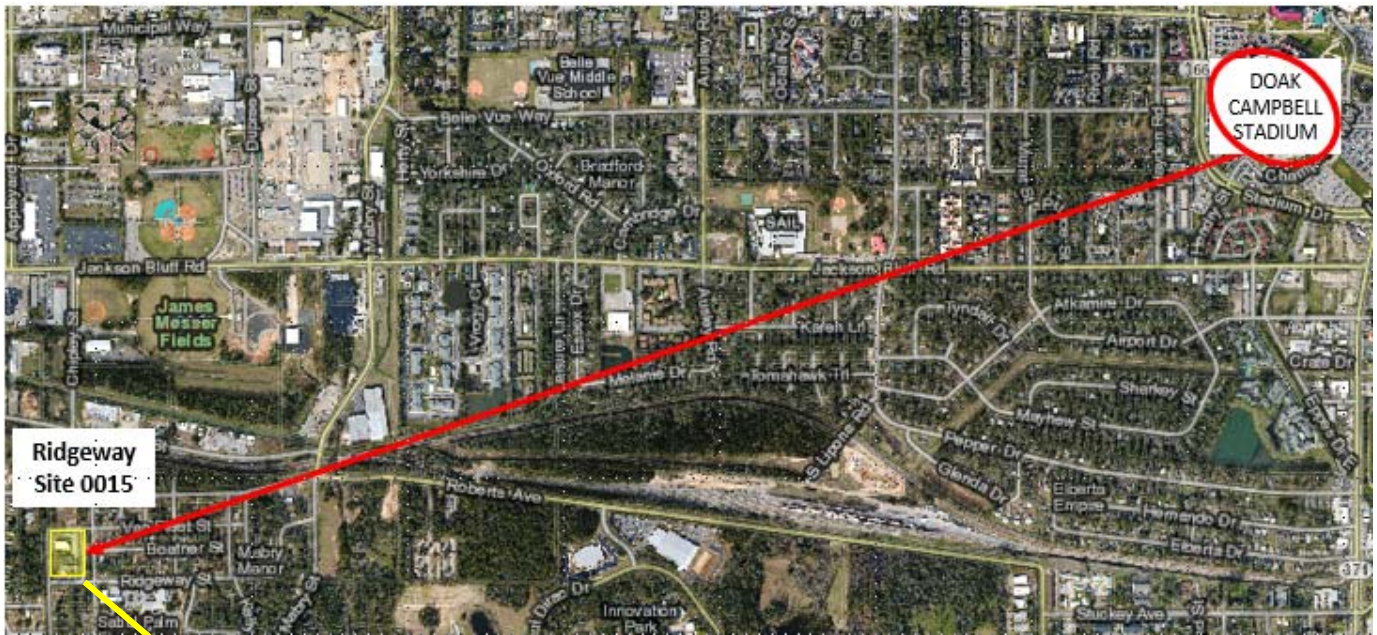
BUILDING NUMBER	BUILDING NAME
1004	P.C.- TRACTOR STORAGE
1005	P.C.- BARRON BUILDING.
1006	P.C.- FACULTY BUILDING. (B NORTH)
1007	P.C.- TECHNOLOGY BUILDING. (B SOUTH)
1008	P.C.- BAY BUILDING (BLDG. C)
1009	P.C.- AUDITORIUM
1010	P.C.- WFSG-TV TRANSMITTER BLDG. (off site)
1012	P.C.- BLAND CONFERENCE CENTER
1014	P.C.- ADMINISTRATIVE SERVICES CENTER
1015	P.C.- HOLLEY ACADEMIC CENTER.

SITE 0012 – BELLE VUE



BUILDING NUMBER	BUILDING NAME
4500	CARNAGHI ART BUILDING
4551	CARNAGHI BUILDING A
4552	CARNAGHI BUILDING B
4553	CARNAGHI BUILDING C

SITE 0015 – RIDGEWAY



BUILDING NUMBER	BUILDING NAME
8050	FHP ACADEMY
8051	FHP DORM

SITE 0017 – COLLEGE OF ENGINEERING



BUILDING NUMBER	BUILDING NAME
0577	ENGINEERING BUILDING A
0527	ENGINEERING BUILDING B

SITE 0018 – INNOVATION PARK



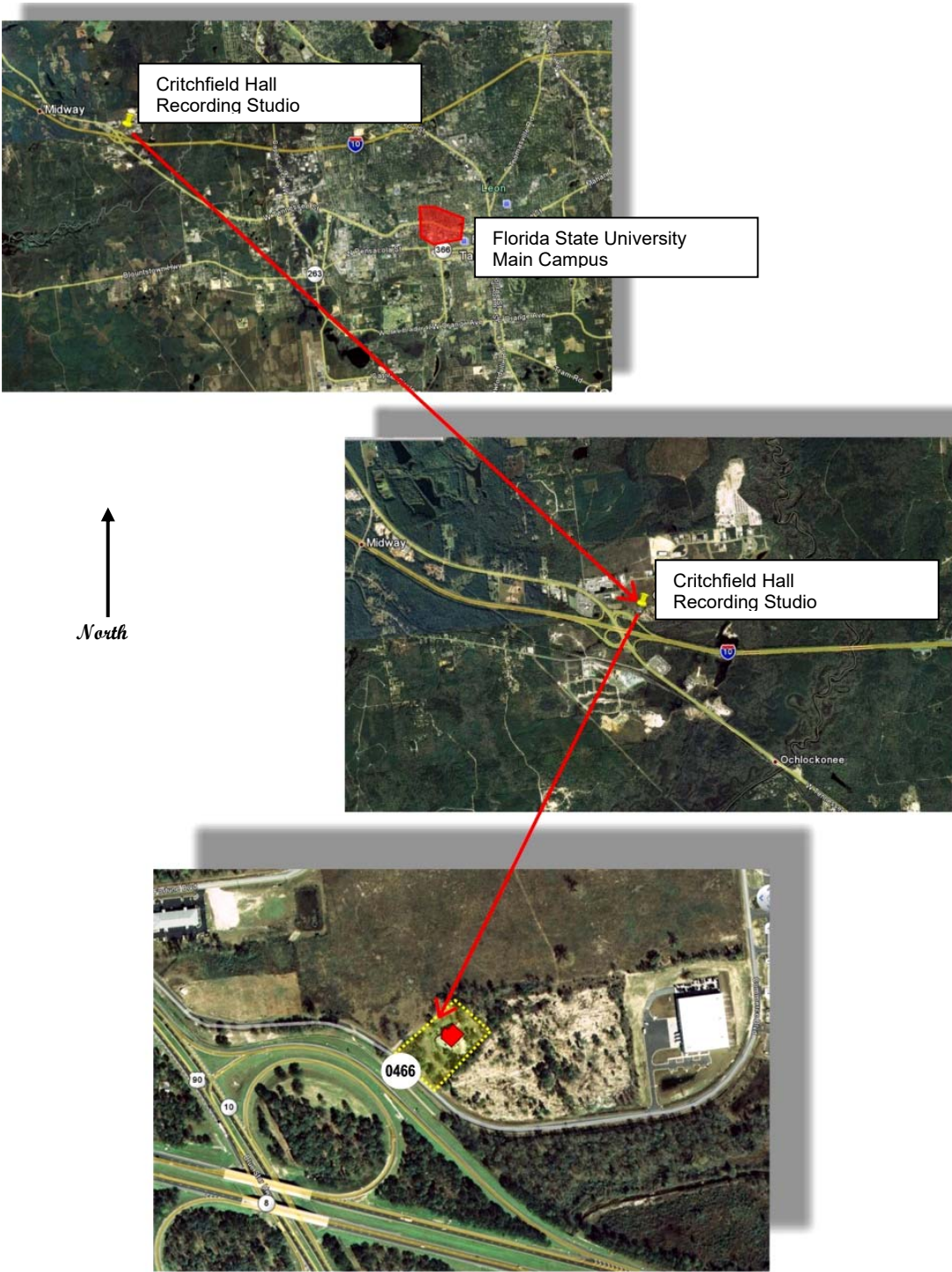
BUILDING

NUMBER

BUILDING NAME

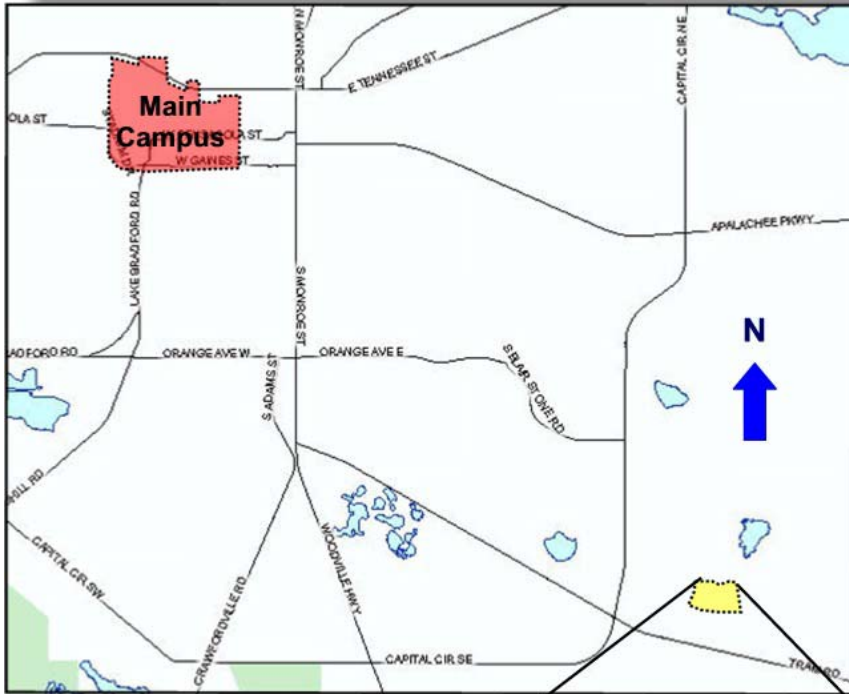
0022	MAG LAB - GENERAL SCIENCE
0069	MAG LAB - OPMD (UTILITIES)
0269	MAG LAB - NMR BUILDING
0804	I.P. - SLIGER (BERNARD F.)
0814	I.P. - SHAW (FRANK) BLDG
0824	RESEARCH FOUNDATION - BLDG. A
0825	RESEARCH FOUNDATION - BLDG. B
0826	CAPS DIELECTRICS LAB
0827	CAPS MEDIUM VOLTAGE LAB
0849	CAPS HIGH-BAY LAB
0854	MATERIALS RESEARCH BUILDING
0855	AME BUILDING
0856	AME UTILITIES BUILDING
0860	TECHNOLOGY SERVICES BLDG

SITE 0019 – GADSDEN COUNTY



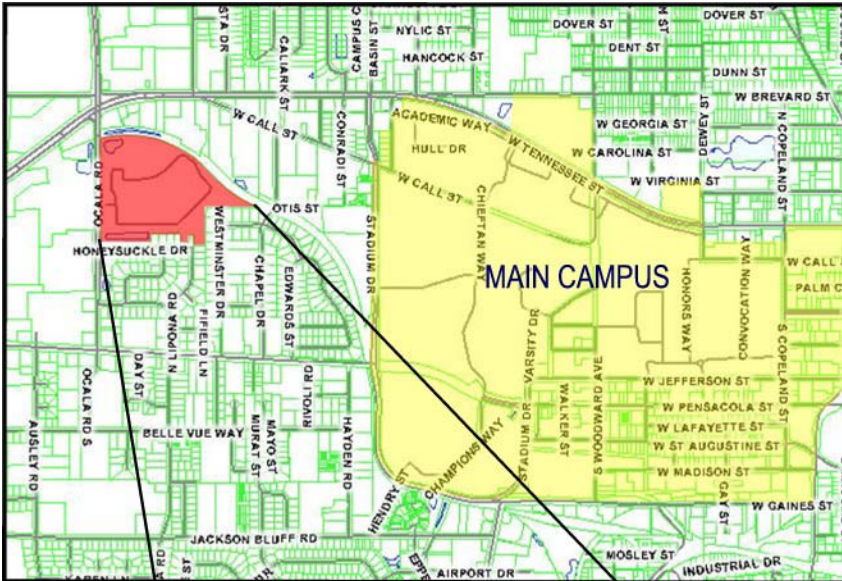
BUILDING	
NUMBER	BUILDING NAME
0466	CRITCHFIELD HALL (RECORDING STUDIO)

SITE 0020 – SOUTHWOOD



BUILDING NUMBER	BUILDING NAME
2001 to 2013	Site is owned but leased to others. Buildings are not owned by Florida State University.

SITE 0023 – HERITAGE GROVE



BUILDING NUMBER	BUILDING NAME
3001 to 3014	Site is owned but leased to others. Buildings are not owned by Florida State University.

SITE 0041 – NORTHWEST CAMPUS



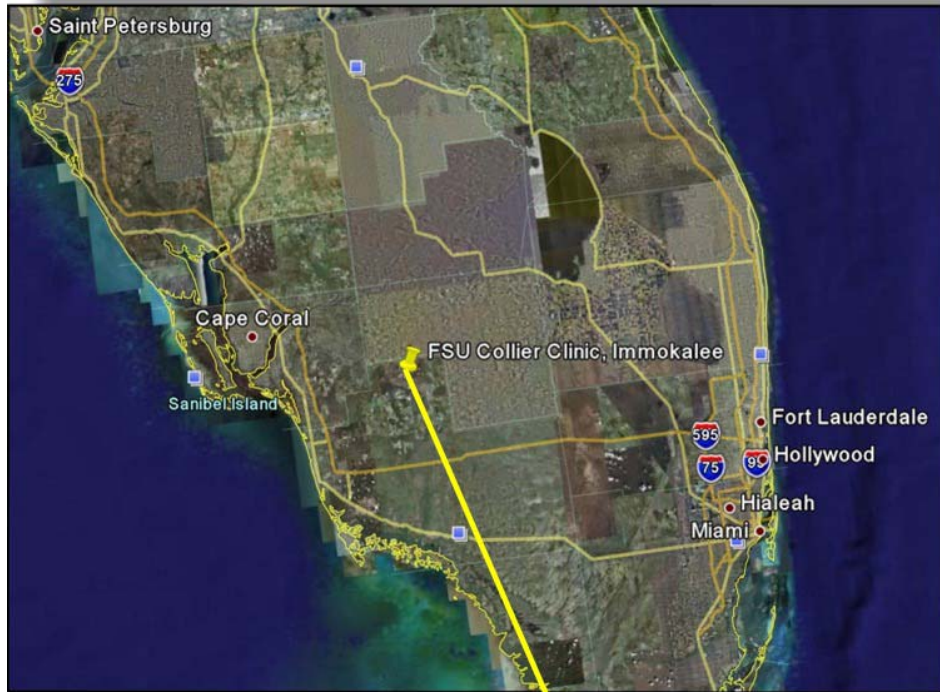
BUILDING NUMBER	BUILDING NAME
3401	FSURF ENTREPRENEURIAL BUILDING
3402	FSU RESEARCH COMPLEX
3403	COMMONWEALTH COMPLEX

SITE 0042 – NORTH CAMPUS



BUILDING NUMBER	BUILDING NAME
3801	FACILITY FOR ARTS RESEARCH

SITE 0067 – COLLIER COUNTY



BUILDING NUMBER	BUILDING NAME
2600	COLLIER CLINIC - FSU COLLEGE OF MEDICINE