

RECREATION AND OPEN SPACE ELEMENT

NOTE: Unless otherwise noted, the goals, objectives and policies contained in this element shall guide development of the Tallahassee Campus in Tallahassee, Florida as well as the Panama City Campus in Panama City, Florida. This Campus Master Plan covers a ten-year horizon, beginning January 1, 2020 until December 31, 2029.

Goal 1

To provide adequate and accessible recreation facilities and open space to meet the future needs of the University.

Objective 1A

Coordinate public and private resources to meet the needs for recreational facilities and open space.

Policy 1A-1

The University shall continue regularly scheduled meetings with appropriate City of Tallahassee and Leon County officials to identify common recreation and open space needs and to determine if resources are available from either party to share as a means of meeting common needs. The University shall pursue interlocal agreements and memoranda of understanding as needed to provide for the joint use of identified sites, facilities, and programs.

Policy 1A-2

The University will address on a case-by-case basis the use of private facilities to meet short-term recreation needs in lieu of providing its own facilities.

Objective 1B

Enhance and preserve existing passive recreation areas and open space on campus.

Policy 1B-1

The University shall continue to survey campus parks, passive recreational facilities, and open spaces to identify deficiencies. The adopted Campus Master Plan shall be amended as needed to incorporate the results and recommendations contained in this survey.

Policy 1B-2

After accomplishing the survey above, if any deficiencies are found, the University will set a timetable to remedy the deficiencies. The adopted Campus Master Plan will be amended as needed to incorporate the timetable and results of the survey.

Policy 1B-3

The University shall establish and maintain densities and intensities of land uses for the development of the campus that maximize the retention of on-campus open space. These densities and intensities are established in Future Land Use Element Policy 1B-9 and **Table 4.1**.

Objective 1C

Provide adequate parks, recreational facilities, and open space for the future.

Policy 1C-1

Locate infrastructure and building projects to maximize the retention of campus open space and to help shape campus spaces.

Policy 1C-2

The University shall provide future recreation facilities and open spaces as identified on **Figures 8.1** and **8.2** for the Tallahassee Campus and **Figure 8.3** for the Panama City Campus. The timing and phasing requirements and priorities for these improvements are established in the Capital Improvements Element.

Policy 1C-3

Follow the list of improvements defined in Urban Design Element Policy 1B-4 for the development of campus recreation and open space areas.

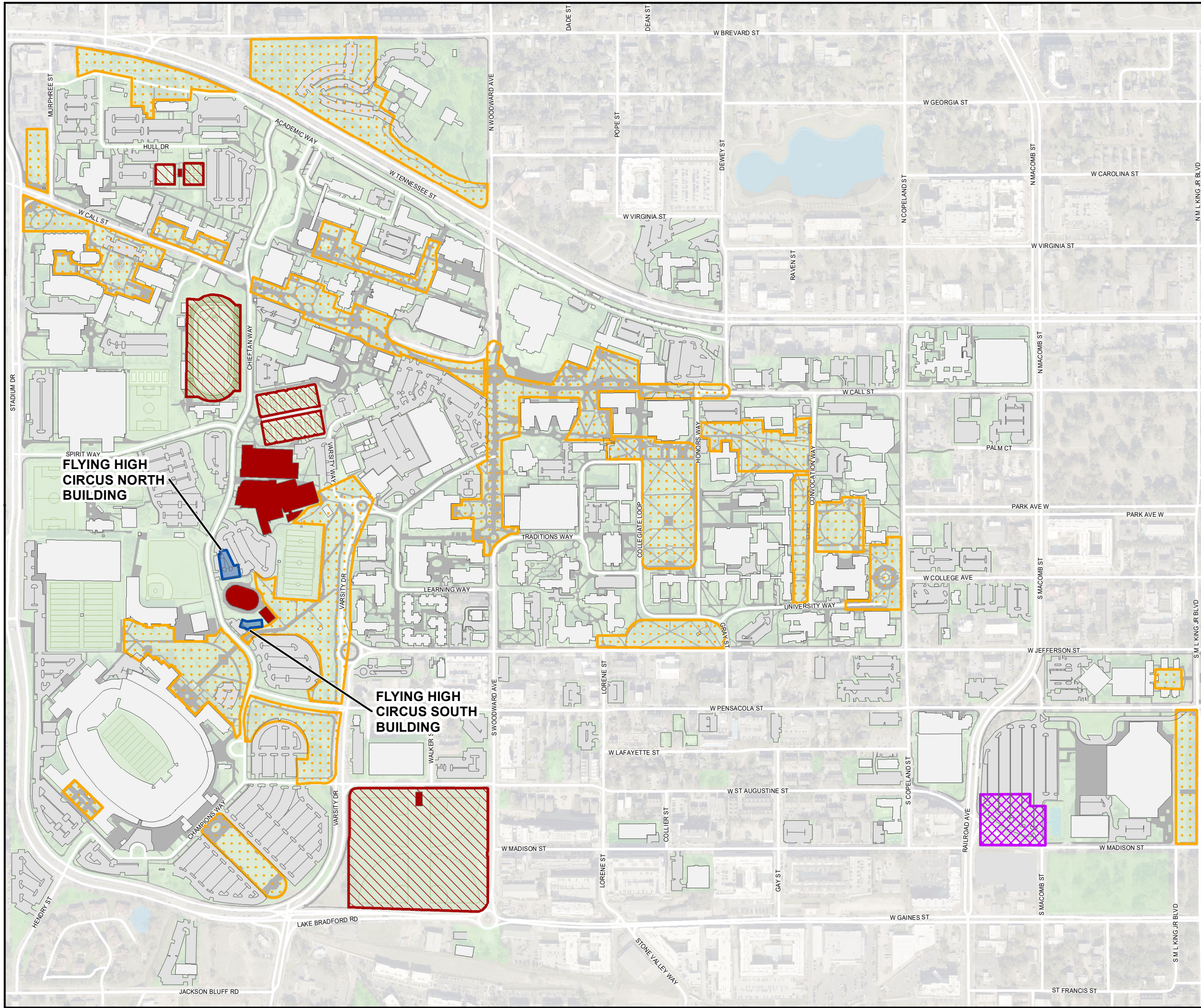


FIGURE 8.1

**FUTURE
RECREATION AND
OPEN SPACE
LOCATIONS**

LEGEND:

- EXISTING RECREATION BUILDINGS
- EXISTING RECREATION FIELDS
- EXISTING GENERAL OPEN SPACE
- FUTURE RECREATION BUILDINGS
- FUTURE RECREATION FIELDS (NONE)
- FUTURE OPEN SPACE

SOURCE:
FSU FACILITIES PLANNING
TLCGIS

**FLORIDA STATE UNIVERSITY
TALLAHASSEE CAMPUS**

**GOP
24 SEPTEMBER 2021**

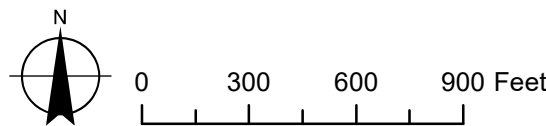


FIGURE 8.2

**FUTURE
RECREATION AND
OPEN SPACE
LOCATIONS**

LEGEND:

- EXISTING RECREATION BUILDINGS
- EXISTING RECREATION FIELDS
- EXISTING GENERAL OPEN SPACE
- FUTURE RECREATION BUILDINGS
- FUTURE RECREATION FIELDS
- FUTURE OPEN SPACE (NONE)

SOURCE:
FSU FACILITIES PLANNING
TLCGIS

**FLORIDA STATE UNIVERSITY
TALLAHASSEE CAMPUS
SOUTHWEST**

**GOP
24 SEPTEMBER 2021**

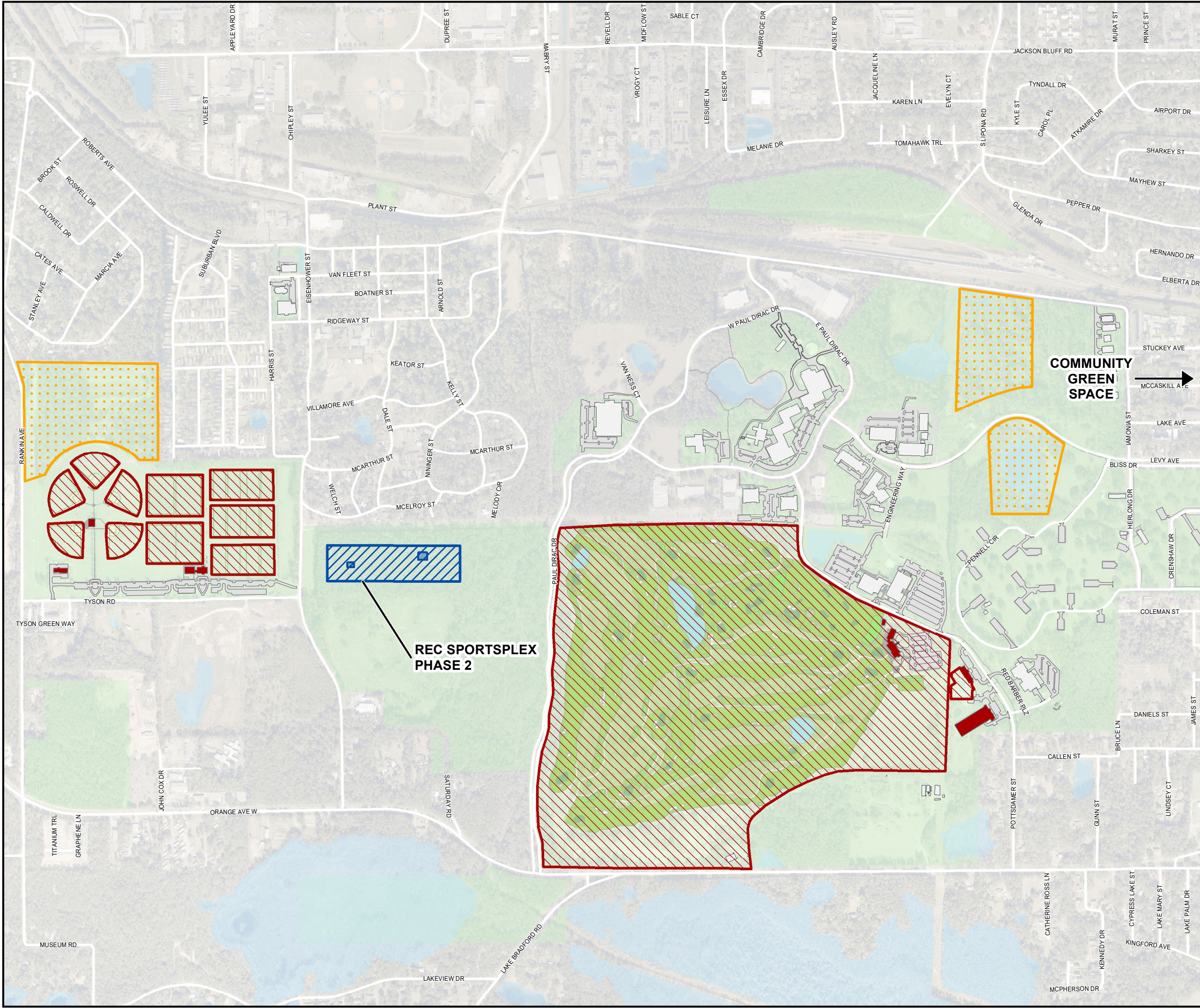
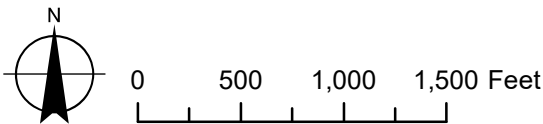


FIGURE 8.3

**FUTURE
RECREATION AND
OPEN SPACE
LOCATIONS**

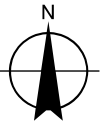
LEGEND:

- EXISTING RECREATION BUILDINGS (NONE)
- EXISTING RECREATION FIELDS
- EXISTING GENERAL OPEN SPACE
- FUTURE RECREATION BUILDINGS (NONE)
- FUTURE RECREATION FIELDS (NONE)
- FUTURE OPEN SPACE

SOURCE:
FSU FACILITIES PLANNING
BAY COUNTY GIS

**FLORIDA STATE UNIVERSITY
PANAMA CITY**

**GOP
24 SEPTEMBER 2021**



0 50 100 150 200 Feet

