



Owner

Florida State University
 600 West College Avenue
 Tallahassee, FL 32306
 p 850.644.2525
 Contact: Mary Jo Spector

Architect

WA Wilson Architects Inc.
 374 Congress Street
 Suite 400
 Boston MA 02210
 p 617.338.5990
 Contact: Chris Martin

Structural Engineer

Walter P. Moore
 201 East Kennedy Blvd, Suite 300
 Tampa, FL 33602
 p 813.221.2424

MEP Engineer

Affiliated Engineers SE, Inc.
 12921 SW 1st Road
 Suite 205
 Gainesville, FL 32669
 p 352.3376.5500

Civil & Landscape Engineers

Moore Bass Consulting
 805 N Gadsden Street
 Tallahassee, FL 32303
 p 850.222.5678

Acoustic/Vibration

Acentech Inc.
 33 Moulton Street
 Cambridge, MA 02138
 p 617.499.8000

Geotech Engineers

Ardaman & Associates
 3175 West Tharpe Street
 Tallahassee, FL 32303
 p 850.576.4646



Florida State University - IRCB Conceptual Schematics Package

Issued 4 June 2015

NO.	DRAWING TITLE	SCALE
ARCHITECTURAL DRAWING SHEET LIST		
COVER	COVER / DRAWING LIST	N / A
A1.10	SITE PLAN	1/32" = 1'-0"
A2.10	LEVEL ONE PLAN	3/32" = 1'-0"
A2.20	LEVEL TWO PLAN	3/32" = 1'-0"
A2.30	LEVEL THREE PLAN	3/32" = 1'-0"
A2.40	PENTHOUSE PLAN	3/32" = 1'-0"
A3.00	BUILDING RENDERINGS	NTS
A3.01	BUILDING RENDERINGS	NTS
A3.20	BUILDING SECTIONS P	3/32" = 1'-0"
A3.21	BUILDING SECTIONS P	3/32" = 1'-0"



**Florida State University
IRCB**

Owner
Florida State University
600 West College Avenue
Tallahassee, FL 32306
p 850.644.3332
Contact: Mary Jo Spector

Architect
Wilson Architects Inc.
374 Congress Street
Suite 400
Boston, MA 02210
p 617.338.5990
Contact: Chris Martin

Structural Engineer
Walter P. Moore
201 East Kennedy Blvd, Suite 300
Tampa, FL 33602
p 813.221.2424

MEP Engineer
Allied Engineers SE, Inc.
12911 SW 1st Road
Suite 205
Gainesville, FL 32669
p 352.5376.5500

Civil & Landscape Engineers
Moore Bass Consulting
835 N. Gadsden Street
Tallahassee, FL 32303
p 850.222.5678

Acoustic/Vibration
Acertech Inc.
33 Moulton Street
Cambridge, MA 02138
p 617.499.8000

Geotech Engineers
Ardaman & Associates
3175 West Thurgate Street
Tallahassee, FL 32303
p 850.576.4646

**Conceptual
Schematics**



Wilson Architects Inc.
374 Congress Street, Suite 400 Boston, MA 02210
(p) 617-338-5990 (f) 617-338-5991

Drawn By: JCCX
Checked By: BW
Approved By: CM

ISSUES

#	DATE	DESCRIPTION

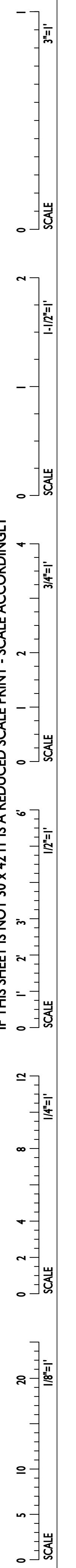
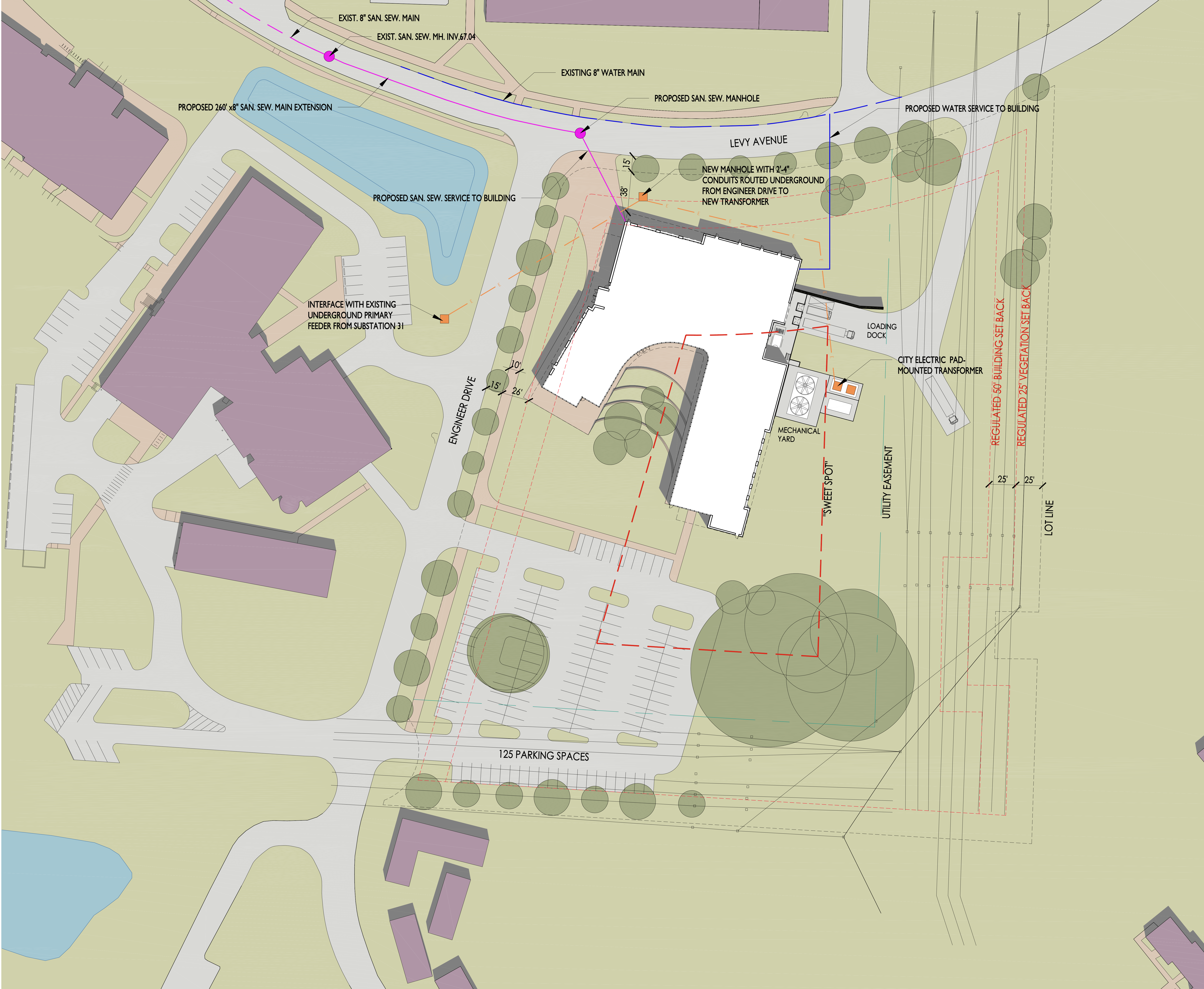
REVISIONS

#	DATE	DESCRIPTION

Date Issued: 04 JUNE 2015
Project Number: 7300-00
Drawing Scale: 1/32" = 1'-0"

SITE PLAN

AI.10



IF THIS SHEET IS NOT 30 x 42 IT IS A REDUCED SCALE PRINT - SCALE ACCORDINGLY

IF THIS SHEET IS NOT 30 x 42 IT IS A REDUCED SCALE PRINT



**Florida State University
IRCB**

Owner
Florida State University
600 West College Avenue
Tallahassee, FL 32306
p 850.644.3232
Contact: Mary Jo Spector

Architect
Wilson Architects Inc.
374 Congress Street
Suite 400
Boston, MA 02210
p 617.338.5991
Contact: Chris Martin

Structural Engineer
Walter P. Moore
201 East Kennedy Blvd, Suite 300
Tampa, FL 33602
p 813.221.2424

MEP Engineer
Allied Engineers SE, Inc.
12991 SW 1st Road
Suite 205
Gainesville, FL 32609
p 352.374.5500

Civil & Landscape Engineers
Moore Bass Consulting
855 N. Gadsden Street
Tallahassee, FL 32303
p 850.222.5678

Acoustic/Vibration
Acantech Inc.
33 Moulton Street
Cambridge, MA 02138
p 617.499.8000

Geotech Engineers
Arndman & Associates
3175 West Thurgate Street
Tallahassee, FL 32303
p 850.576.4646

**Conceptual
Schematics**



Wilson Architects Inc.
374 Congress Street, Suite 400 Boston, MA 02210
(p) 617-338-5991 (f) 617-338-5991

Drawn By: XXXX
Checked By: BW
Approved By: CM

ISSUES

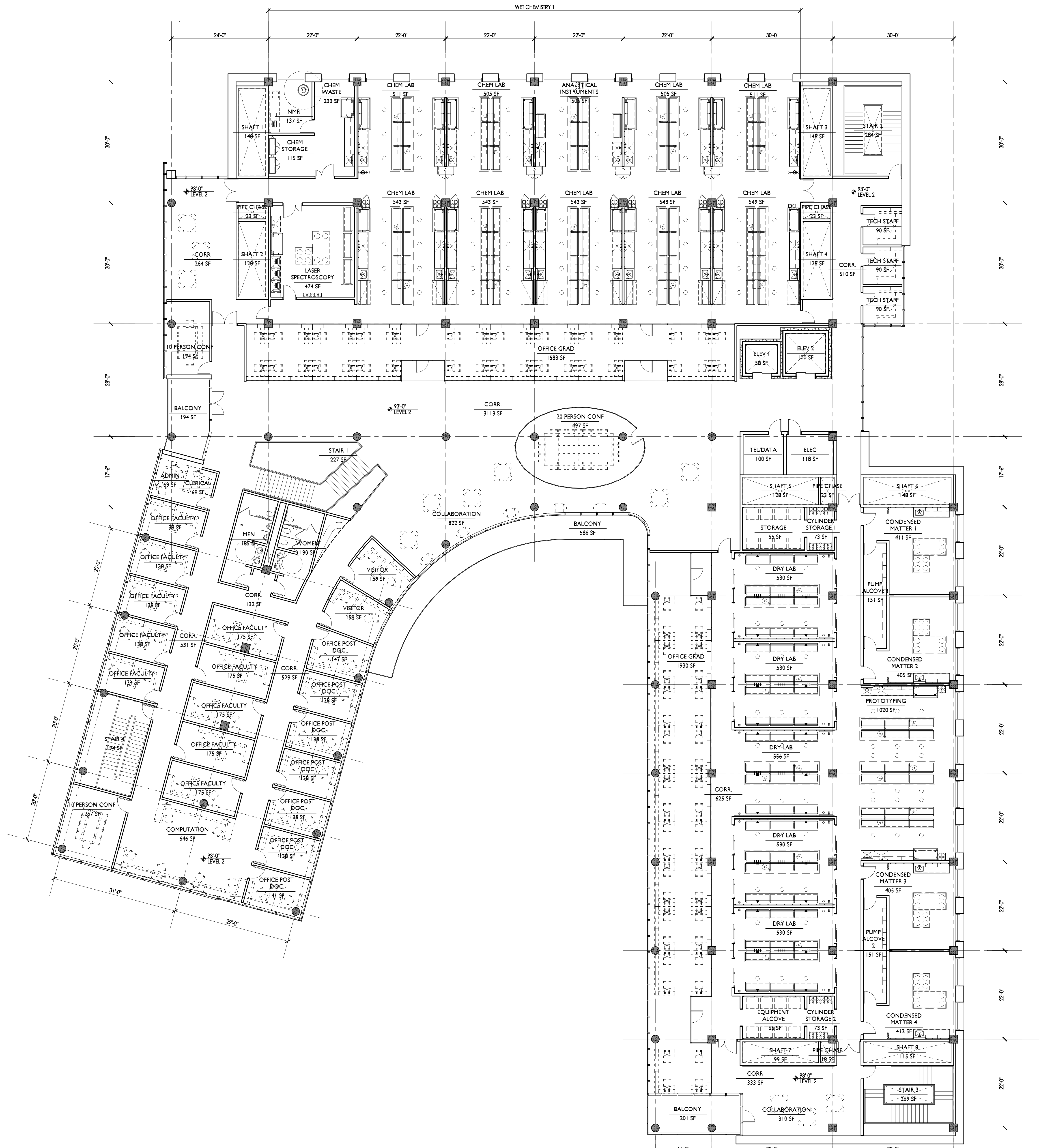
#	DATE	DESCRIPTION

REVISIONS

#	DATE	DESCRIPTION
Date Issued	04 JUNE 2015	
Project Number	7300-00	
Drawing Scale	3/32" = 1'-0"	

SECOND FLOOR PLAN

A2.20



IF THIS SHEET IS NOT 30" x 42" IT IS A REDUCED SCALE PRINT - SCALE ACCORDINGLY

SCALE 3/32" = 1'-0"

SCALE 1/16" = 1'-0"

SCALE 1/8" = 1'-0"

SCALE 3/16" = 1'-0"

SCALE 1/4" = 1'-0"

SCALE 3/8" = 1'-0"

SCALE 1/2" = 1'-0"

SCALE 5/8" = 1'-0"

SCALE 3/4" = 1'-0"

SCALE 7/8" = 1'-0"

SCALE 1" = 1'-0"

SCALE 1 1/8" = 1'-0"

SCALE 1 1/4" = 1'-0"

SCALE 1 3/8" = 1'-0"

SCALE 1 1/2" = 1'-0"

SCALE 1 3/4" = 1'-0"

SCALE 1 7/8" = 1'-0"

SCALE 2" = 1'-0"

SCALE 2 1/4" = 1'-0"

SCALE 2 1/2" = 1'-0"

SCALE 2 3/4" = 1'-0"

SCALE 3" = 1'-0"

SCALE 3 1/4" = 1'-0"

SCALE 3 1/2" = 1'-0"

SCALE 3 3/4" = 1'-0"

SCALE 4" = 1'-0"

SCALE 4 1/4" = 1'-0"

SCALE 4 1/2" = 1'-0"

SCALE 4 3/4" = 1'-0"

SCALE 5" = 1'-0"

SCALE 5 1/4" = 1'-0"

SCALE 5 1/2" = 1'-0"

SCALE 5 3/4" = 1'-0"

SCALE 6" = 1'-0"

SCALE 6 1/4" = 1'-0"

SCALE 6 1/2" = 1'-0"

SCALE 6 3/4" = 1'-0"

SCALE 7" = 1'-0"

SCALE 7 1/4" = 1'-0"

SCALE 7 1/2" = 1'-0"

SCALE 7 3/4" = 1'-0"

SCALE 8" = 1'-0"

SCALE 8 1/4" = 1'-0"

SCALE 8 1/2" = 1'-0"

SCALE 8 3/4" = 1'-0"

SCALE 9" = 1'-0"

SCALE 9 1/4" = 1'-0"

SCALE 9 1/2" = 1'-0"

SCALE 9 3/4" = 1'-0"

SCALE 10" = 1'-0"

SCALE 10 1/4" = 1'-0"

SCALE 10 1/2" = 1'-0"

SCALE 10 3/4" = 1'-0"

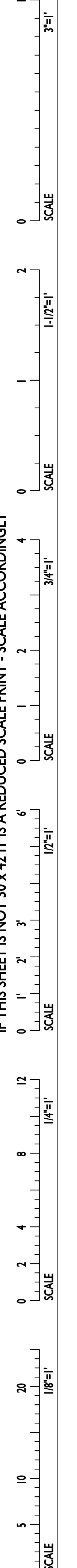
SCALE 11" = 1'-0"

SCALE 11 1/4" = 1'-0"

SCALE 11 1/2" = 1'-0"

SCALE 11 3/4" = 1'-0"

SCALE 12" = 1'-0"



IF THIS SHEET IS NOT 30" x 42" IT IS A REDUCED SCALE PRINT - SCALE ACCORDINGLY



BIOLOGICAL ENGINEERING / BIOMOLECULAR SCIENCE



Florida State University
IRCB

Owner
Florida State University
600 West College Avenue
Tallahassee, FL 32306
p 850.644.3523
Contact: Mary Jo Spector

Architect
Wilson Architects Inc.
374 Congress Street
Suite 400
Boston, MA 02210
p 617.338.5990
Contact: Chris Martin

Structural Engineer
Walter P. Moore
201 East Kennedy Blvd, Suite 300
Tampa, FL 33602
p 813.221.2424

MEP Engineer
Allied Engineers SE, Inc.
1291 SW 1st Road
Suite 205
Gainesville, FL 32609
p 352.3374.5500

Civil & Landscape Engineers
Moore East Consulting
855 N. Gadsden Street
Tallahassee, FL 32303
p 850.222.5678

Acoustic/Vibration
Acrotech Inc.
33 Moulton Street
Cambridge, MA 02138
p 617.499.8000

Geotech Engineers
Ardman & Associates
3175 West Thurgate Street
Tallahassee, FL 32303
p 850.576.4646

Conceptual
Schematics



Wilson Architects Inc.
374 Congress Street, Suite 400 Boston, MA 02210
(p) 617-338-5990, (f) 617-338-5991

Drawn By: XXXX
Checked By: BW
Approved By: CM

ISSUES

#	DATE	DESCRIPTION

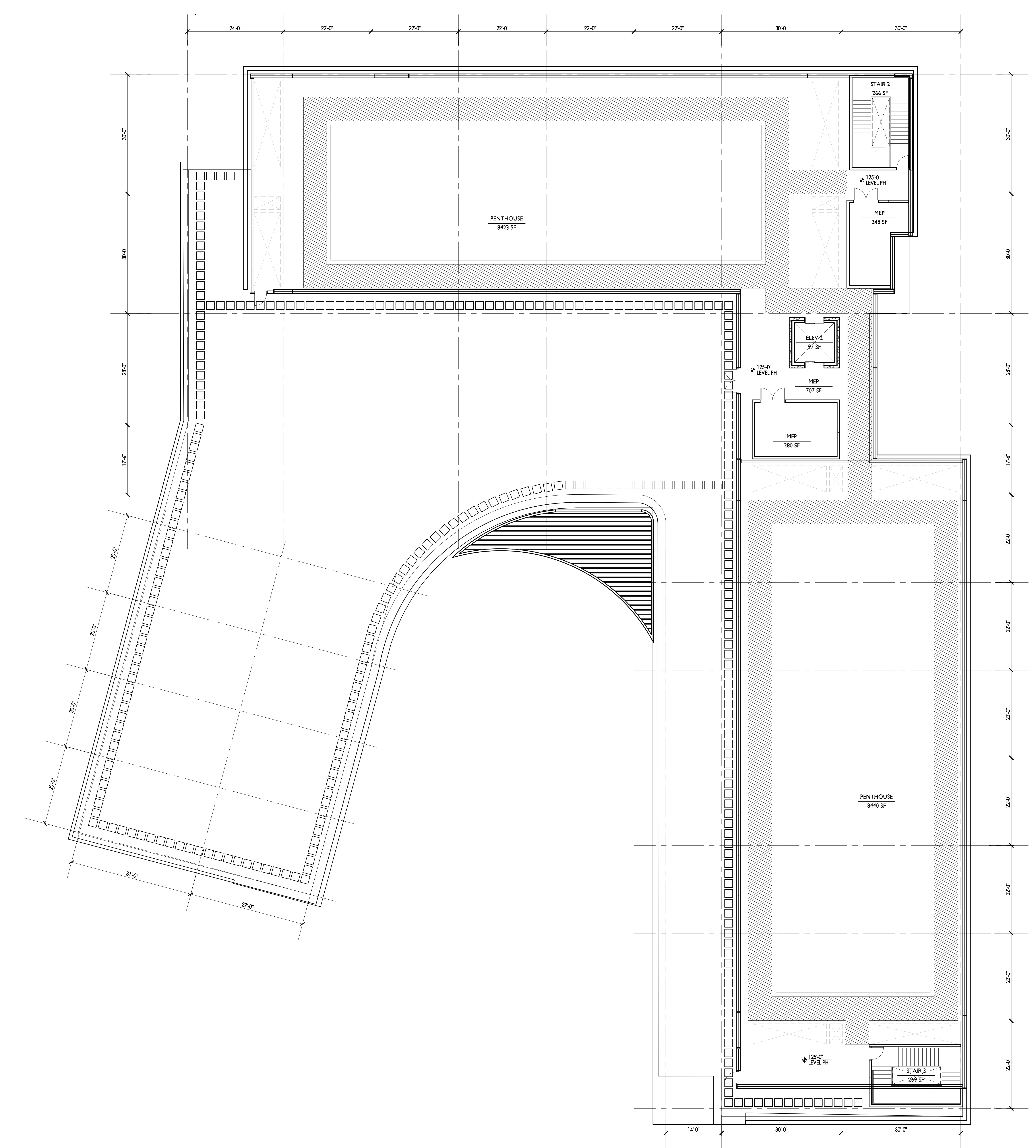
REVISIONS

#	DATE	DESCRIPTION

Date Issued: 04 JUNE 2015
Project Number: 7300-00
Drawing Scale: 3/32" = 1'-0"

FOUR FLOOR PLAN

A2.40



IF THIS SHEET IS NOT 30 x 42 IT IS A REDUCED SCALE PRINT - SCALE ACCORDINGLY

Scale bars for 3/32" = 1'-0", 1/16" = 1'-0", and 1/8" = 1'-0".



**Florida State University
IRCB**

Owner
Florida State University
600 West College Avenue
Tallahassee, FL 32306
p 850.644.2525
Contact: Mary Jo Spector

Architect
Wilson Architects Inc.
374 Congress Street
Suite 400
Boston, MA 02210
p 617.338.5991
Contact: Chris Martin

Structural Engineer
Walter P. Moore
201 East Kennedy Blvd., Suite 300
Tampa, FL 33602
p 813.221.2424

MEP Engineer
Affiliated Engineers SE, Inc.
12911 SW 1st Road
Suite 105
Gainesville, FL 32609
p 352.374.5500

Civil & Landscape Engineers
Moore Bass Consulting
835 N. Gadsden Street
Tallahassee, FL 32303
p 850.222.5678

Acoustic/Vibration
Aerotech Inc.
33 Moulton Street
Cambridge, MA 02138
p 617.499.8000

Geotech Engineers
Ardayman & Associates
3175 West Thurgate Street
Tallahassee, FL 32303
p 850.576.4646



4 VIEW FROM PARKING LOT



2 COURTYARD VIEW

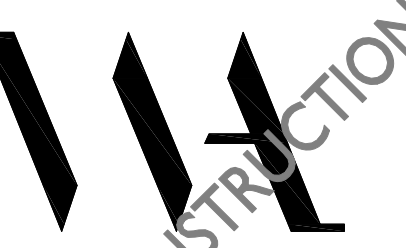


3 VIEW FROM LEVY



1 GATEWAY VIEW

**Conceptual
Schematics**



Wilson Architects Inc.
374 Congress Street, Suite 400 Boston, MA 02210
(p) 617-338-5991 (f) 617-338-5991

Drawn By: JLD
Checked By: BW
Approved By: CM

ISSUES

#	DATE	DESCRIPTION

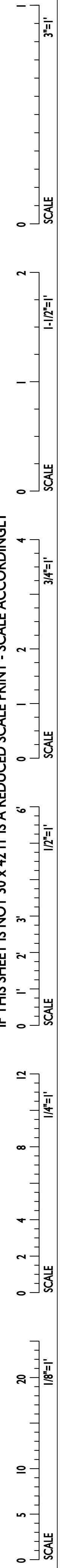
REVISIONS

#	DATE	DESCRIPTION
Date Issued	04 JUNE 2015	
Project Number	7300-00	
Drawing Scale	NTS	

BUILDING RENDERINGS

A3.00

IF THIS SHEET IS NOT 30" x 42" IT IS A REDUCED SCALE PRINT - SCALE ACCORDINGLY





Florida State University
IRCB

Owner
Florida State University
600 West College Avenue
Tallahassee, FL 32306
p 850.644.3353
Contact: Mary Jo Spector

Architect
Wilson Architects Inc.
374 Congress Street
Suite 400
Boston MA 02210
p 617.338.5990
Contact: Chris Martin

Structural Engineer
Walker P. Moore
201 East Kennedy Blvd, Suite 300
Tampa, FL 33602
p 813.221.2454

MEP Engineer
Allied Engineers SE, Inc.
12921 SW 1st Road
Suite 205
Gainesville, FL 32669
p 352.3376.5500

Civil & Landscape Engineers
Moore Bass Consulting
805 N Garden Street
Tallahassee, FL 32303
p 850.222.6678

Acoustic/Vibration
Asentech Inc.
33 Moulton Street
Cambridge, MA 02138
p 617.499.8000

Geotech Engineers
Ardayan & Associates
3175 West Thurgate Street
Tallahassee, FL 32303
p 850.576.4646

Conceptual
Schematics



Wilson Architects Inc.
374 Congress Street, Suite 400 Boston, MA 02210
p 617-338-5990 f 617-338-5991

Drawn By: LDY
Checked By: BW
Approved By: CM

#	DATE	DESCRIPTION

#	DATE	DESCRIPTION

#	DATE	DESCRIPTION
Date Issued	04 JUNE 2015	
Project Number	7300-00	
Drawing Scale	NTS	

BUILDING RENDERINGS

A3.01



4 WEST ELEVATION



2 EAST ELEVATION

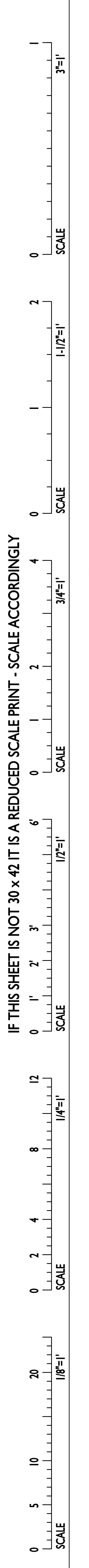


3 SOUTH ELEVATION



1 NORTH ELEVATION

IF THIS SHEET IS NOT 30" x 42" IT IS A REDUCED SCALE PRINT - SCALE ACCORDINGLY





Florida State University
IRCB

Owner
Florida State University
600 West College Avenue
Tallahassee, FL 32306
p 850.644.2523
Contact: Mary Jo Spector

Architect
Wilson Architects Inc.
374 Congress Street
Suite 400
Boston, MA 02210
p 617.338.5990
Contact: Chris Martin

Structural Engineer
Walter P. Moore
201 East Kennedy Blvd, Suite 300
Tampa, FL 33602
p 813.721.2424

MEP Engineer
Allied Engineers SE, Inc.
12911 SW 1st Road
Suite 205
Gainesville, FL 32669
p 352.374.5500

Civil & Landscape Engineers
Moore Bass Consulting
855 N. Gadsden Street
Tallahassee, FL 32303
p 850.222.5678

Acoustic/Vibration
Acertech Inc.
33 Moulton Street
Cambridge, MA 02138
p 617.499.8000

Geotech Engineers
Arndman & Associates
3175 West Thurpe Street
Tallahassee, FL 32303
p 850.576.4646

Conceptual Schematics



Wilson Architects Inc.
374 Congress Street, Suite 400 Boston, MA 02210
(p) 617-338-5990 (f) 617-338-5991

Drawn By: JXX
Checked By: BW
Approved By: CM

ISSUES

#	DATE	DESCRIPTION

REVISIONS

#	DATE	DESCRIPTION
Date Issued	04 JUNE 2015	
Project Number	7300-00	
Drawing Scale	3/32" = 1'-0"	

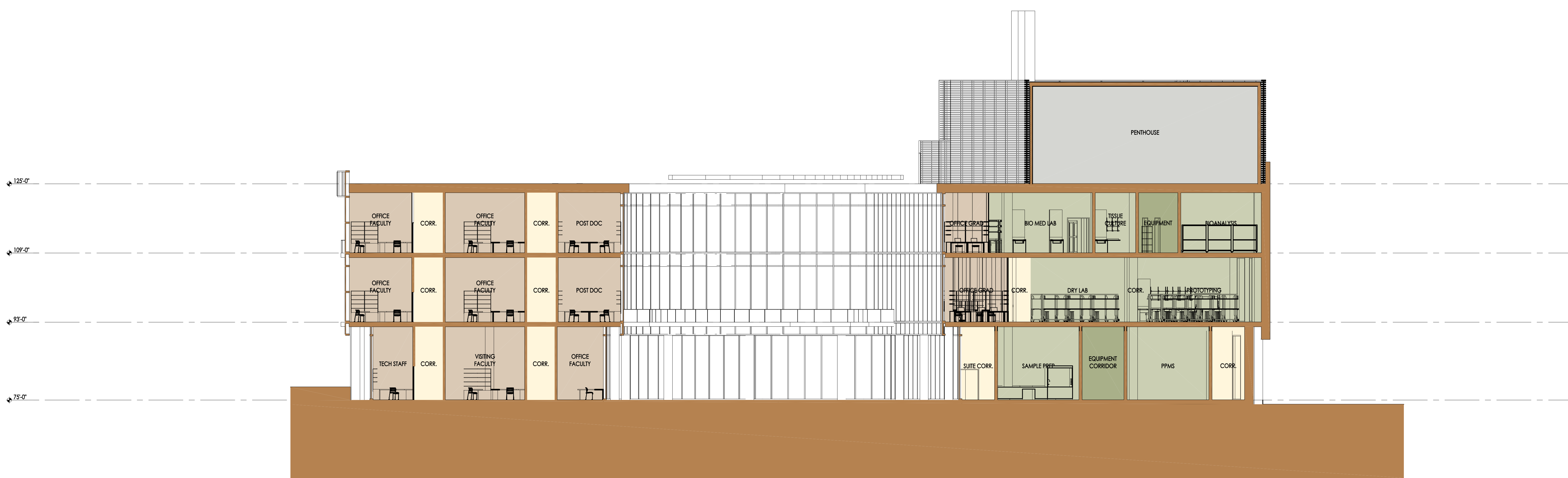
BUILDING SECTIONS P

A3.20

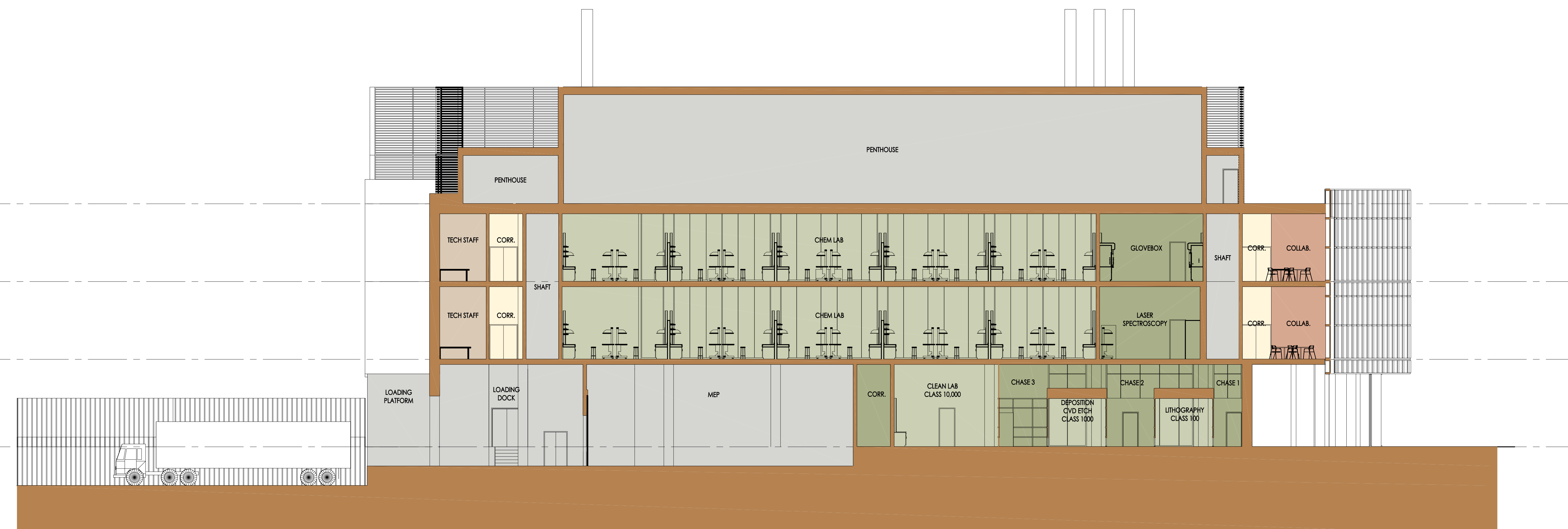
IF THIS SHEET IS NOT 30" x 42" IT IS A REDUCED SCALE PRINT - SCALE ACCORDINGLY
SCALE 3/32"=1'-0"
SCALE 1/16"=1'-0"
SCALE 1/8"=1'-0"
SCALE 3/16"=1'-0"

IF THIS SHEET IS NOT 30" x 42" IT IS A REDUCED SCALE PRINT - SCALE ACCORDINGLY
SCALE 3/32"=1'-0"
SCALE 1/16"=1'-0"
SCALE 1/8"=1'-0"
SCALE 3/16"=1'-0"

IF THIS SHEET IS NOT 30" x 42" IT IS A REDUCED SCALE PRINT - SCALE ACCORDINGLY
SCALE 3/32"=1'-0"
SCALE 1/16"=1'-0"
SCALE 1/8"=1'-0"
SCALE 3/16"=1'-0"



SECTION THROUGH COURTYARD
3/27/14



SECTION THROUGH CLEANROOM AND LOADING DOCK
3/27/14



Florida State University IRCB

Owner
Florida State University
600 West College Avenue
Tallahassee, FL 32306
p 850-644-3232
Contact: Mary Jo Spector

Architect
Wilson Architects Inc.
374 Congress Street
Suite 400
Boston MA 02210
p 617-338-5990
Contact: Chris Martin

Structural Engineer
Walker P. Moore
201 East Kennedy Blvd, Suite 300
Tampa, FL 33602
p 813-221-2424

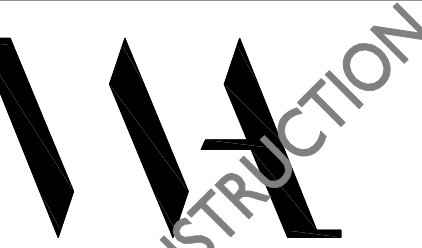
MEP Engineer
Allread Engineers SE, Inc.
12921 SW 1st Road
Suite 205
Gainesville, FL 32669
p 352-3376-5500

Civil & Landscape Engineers
Moore Bass Consulting
805 N Gadsden Street
Tallahassee, FL 32303
p 850-222-5678

Acoustic/Vibration
Acsestech Inc.
33 Moulton Street
Cambridge, MA 02138
p 617-499-8000

Geotech Engineers
Ardaman & Associates
3175 West Tharpe Street
Tallahassee, FL 32303
p 850-576-4646

Conceptual Schematics



Wilson Architects Inc.
374 Congress Street, Suite 400 Boston, MA 02210
(p) 617-338-5990 (f) 617-338-5991

Drawn By: J.C.C.

Checked By: BW

Approved By: CM

DATE DESCRIPTION ISSUES

#	DATE	DESCRIPTION

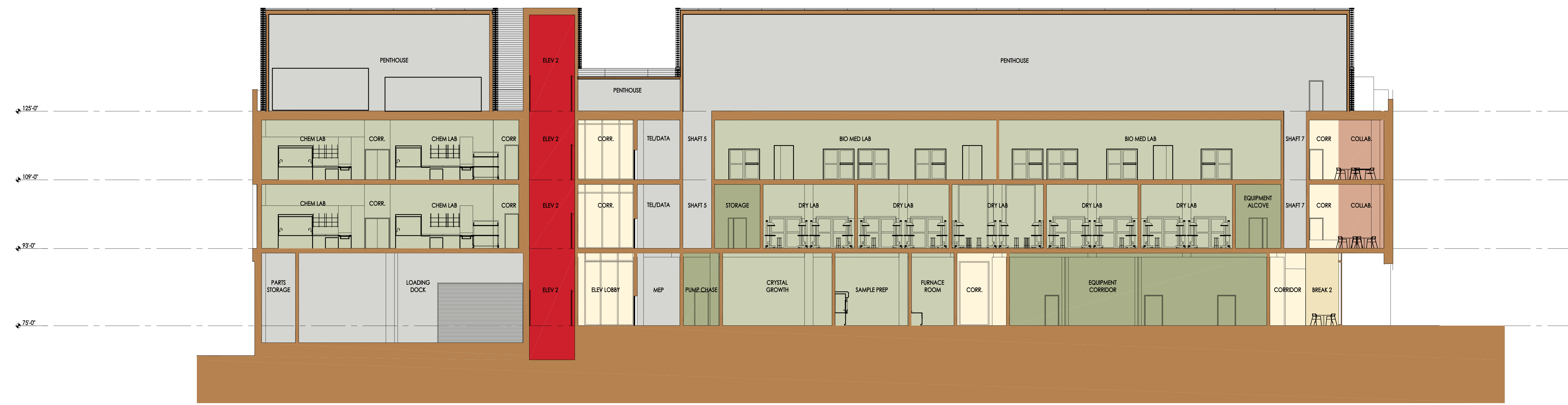
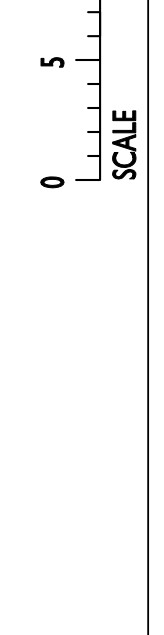
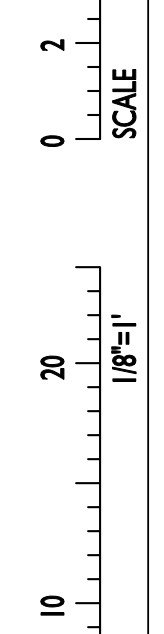
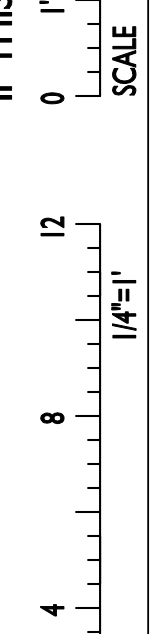
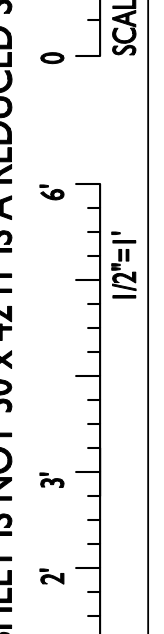
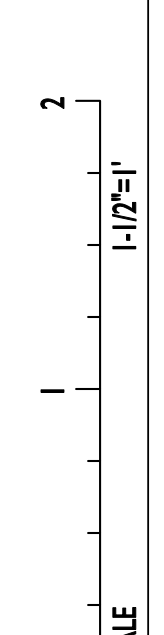
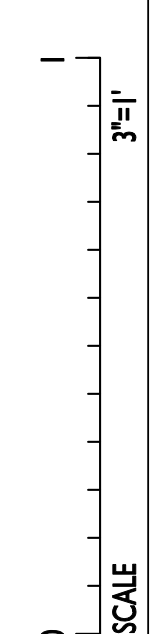
DATE DESCRIPTION REVISIONS

#	DATE	DESCRIPTION
Date Issued	04 JUNE 2015	
Project Number	7300-00	
Drawing Scale	3/32" = 1'-0"	

BUILDING SECTIONS P

A3.21

IF THIS SHEET IS NOT 30" x 42" IT IS A REDUCED SCALE PRINT - SCALE ACCORDINGLY



1 SECTION THROUGH BIOLOGY
300-112

IF THIS SHEET IS NOT 30" x 42" IT IS A REDUCED SCALE PRINT